



**SAFETY
MEIN
SAMJHOTA
NAHIN.**



DIRECTOR'S NOTE

1978 - The year when Precision Pipes was incorporated with a mission and vision to be the lifeline of every building and bring every home to life.

Cut to the present day where, as our tagline would have it, Precision Pipes has become the 'Desh ki lifeline' .

Our journey so far has been all about innovation, understanding the need of the hour and promptly acting upon it, and changing the overall consumer perception about the category with our wide range of products.

We started off with a range of electrical piping systems including Round Conduit uPVC Pipes, G.I. & M.S. Conduit Pipes, uPVC Mini / Maxi Trunking Profile, uPVC Panel Trunking, Corrugated Flexible Conduit Pipes and Fittings.

We've also diversified our offerings so as to cater to a wider audience looking for plumbing piping systems, with our CPVC, ASTM (uPVC), Sewerage Waste and Rainwater (SWR), Agriculture Pipes and Fittings.

To be the 'Desh ki lifeline' , it was imperative for us be connected with the country right from the grassroot level. So we built large scale manufacturing locations at Daman, Bengaluru, & Gujarat.

We've also built a strong distribution network that adheres to national and international standards recognized by leading consultants, architects, construction industries, government departments, defense, railways and automobile industries.

Also, all our products comply with major national and international standards like the ISO 9001: 2015, IS (Indian Standard), BS (British Standard) and CE for Low Voltage Directive.

This has ensured that consumers can buy our products through a dedicated sales network in India as well as in Europe, Middle East, Africa etc.

We've come a long way in our journey so far, but we at Precision Pipes continue to innovate every single day to keep on being 'Saare desh ki lifeline' .

Kunal S. Kadakia

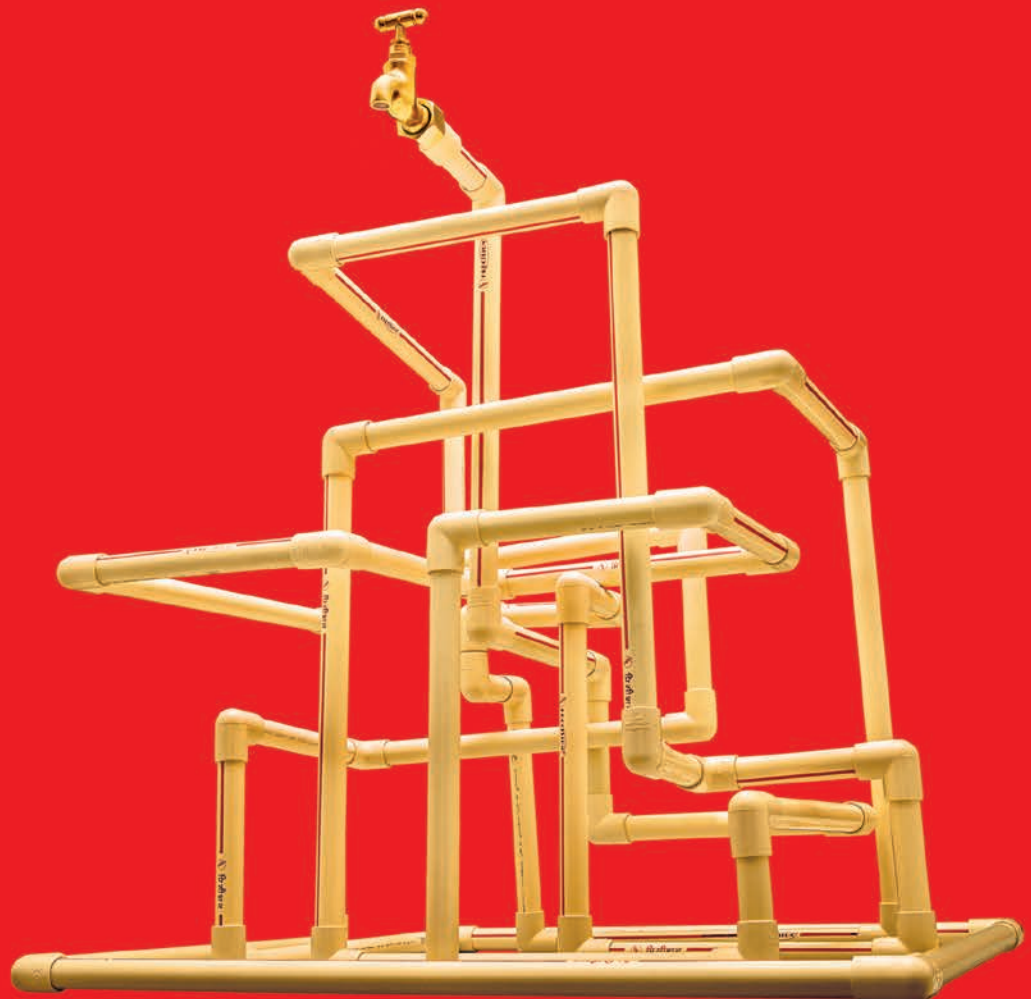
INDEX

CPVC PIPES & FITTINGS	01
ASTM (uPVC) PIPES & FITTINGS	09
SEWERAGE WASTE & RAIN WATER (SWR) PIPES & FITTINGS	17
AGRICULTURE PIPES & FITTINGS	27



CPVC
PIPES & FITTINGS

Precision Chlorinated Poly Vinyl Chloride (CPVC) Pipes and Fittings are manufactured from a specially formulated compound in accordance with Indian Standard IS 15778 - 2007 ; ASTM F 441 and ASTM D 2846 specifications. These pipes and fittings are a perfect choice, having many advantages over the conventional systems as they are corrosion free and resistant to most acids, bases, salts and halogens.





APPLICATIONS

Channelising hot and cold water supply and potable water in homes, apartments, hotels, commercial complex, hospitals, gas and solar applications.

FEATURES



Various Diameters & Grades



Fire retardant & corrosion free



Easy & quick installation



Chemical resistant



Hot & cold water compatible

- Economical, maintenance free.
- Heat efficient and lower installation cost.
- Low thermal expansion.
- Hygienic and environment friendly.
- Service temperature upto 82°C.

COLOUR:



DIMENSIONS OF SDR 11 (CLASS 1) CPVC PIPES - IS 15778 - 2007						
Nominal Size		Nominal OD	Wall Thickness		Working Pressure/kg/cm ²	
Inch	mm				27°C	82°C
1/2	15	15.9	1.7	2.2	27.6	6.8
3/4	20	22.2	2.0	2.5	27.6	6.8
1	25	28.6	2.6	3.1	27.6	6.8
1 1/4	32	34.9	3.2	3.7	27.6	6.8
1 1/2	40	41.3	3.8	4.3	27.6	6.8
2	50	54.0	4.9	5.5	27.6	6.8
DIMENSIONS OF SCH 80 CPVC PIPES - ASTM F 441						
2 1/2	65	73.02	7.01	7.85	29.54	7.38
3	80	88.9	7.62	8.53	26.02	6.52
4	100	114.3	8.56	9.58	22.5	5.62

DIMENSIONS OF SDR 13.5 (CLASS 2) CPVC PIPES - IS 15778 - 2007						
Nominal Size		Nominal OD	Wall Thickness		Working Pressure/kg/cm ²	
Inch	mm				27°C	82°C
1/2	15	15.9	1.4	1.9	21.8	5.5
3/4	20	22.2	1.7	2.2	21.8	5.5
1	25	28.6	2.1	2.6	21.8	5.5
1 1/4	32	34.9	2.6	3.1	21.8	5.5
1 1/2	40	41.3	3.1	3.6	21.8	5.5
2	50	54.0	4.0	4.6	21.8	5.5
DIMENSIONS OF SCH 40 CPVC PIPES - ASTM F 441						
2 1/2	65	73.02	5.16	5.80	27.1	5.27
3	80	88.9	5.49	6.10	18.28	4.57
4	100	114.3	6.02	6.70	15.47	3.87

MINIMUM DIMENSIONS FROM CENTER TO END OF SOCKET (LAYING LENGTH)

CPVC SDR 11 Pipe Fittings

inch	mm	inch	mm	inch	mm	inch	mm
½	15	0.382	9.7	0.183	4.65	0.102	2.59
¾	20	0.507	12.88	0.235	5.97	0.102	2.59
1	25	0.633	16.08	0.287	7.29	0.102	2.59
1¼	32	0.758	19.25	0.339	8.61	0.102	2.59
1½	40	0.884	22.45	0.391	9.93	0.102	2.59
2	50	1.134	28.83	0.495	12.57	0.102	2.59

DIMENSIONS FOR TAPERED SOCKET OF CPVC SDR 11 PIPE FITTINGS

Nom. Size	Socket Entrance				Socket Bottom				Socket Entrance		ID		Wall Thickness				Entrance	
	Diameter mm				Diameter mm				inch	mm	inch	mm	Socket		Socket Bottom		F	F
Inch	A Aver	A Aver	A Tole	A Tole	B Aver	B Aver	B Tole	B Tole	C min	C min	D min	D min	EA min	EA min	EB min	EB min	F	F
½	0.633	16.08	0.003	0.08	0.619	15.72	0.003	0.08	0.500	12.70	0.489	12.42	0.068	1.73	0.102	2.59	0.128	3.25
¾	0.884	22.45	0.003	0.08	0.870	22.10	0.003	0.08	0.700	17.78	0.715	18.16	0.080	2.03	0.102	2.59	0.128	3.25
1	1.135	28.83	0.003	0.08	1.121	28.47	0.003	0.08	0.900	22.86	0.921	23.39	0.102	2.59	0.102	2.59	0.128	3.25
1¼	1.386	35.20	0.003	0.08	1.372	34.85	0.003	0.08	1.100	27.94	1.125	28.58	0.125	3.18	0.125	3.18	0.156	3.96
1½	1.640	41.66	0.004	0.10	1.622	41.20	0.004	0.10	1.300	33.02	1.329	33.76	0.148	3.76	0.148	3.76	0.185	4.70
2	2.141	54.38	0.004	0.10	2.123	53.92	0.004	0.10	1.700	43.18	1.739	44.17	0.193	4.90	0.193	4.90	0.241	6.12
2 ½	2.889	73.38	0.007	0.18	2.868	72.85	0.007	0.18	1.75	44.45	2.25	57.15	0.276	7.01	0.345	8.76	0.9	2.3
3	3.516	89.31	0.008	0.20	3.492	88.70	0.008	0.20	1.875	47.63	2.82	71.63	0.300	7.62	0.375	9.53	0.9	2.3
4	4.518	114.76	0.009	0.23	4.491	114.07	0.009	0.23	2.25	57.15	3.737	94.92	0.337	8.56	0.42	10.67	0.9	2.3

IS:15778



CPVC PIPES IS 15778 - 2007 & ASTM F 441

HSN: 39172390

2007

SR. NO.	PRODUCT CODE	NOMINAL SIZE (mm)	NOMINAL SIZE (inch)	STD.PACK (pcs.)
CPVC PIPES - SDR 11 (Length: 3mtr.)				
1	CPVC 1115/3	15	½	70
2	CPVC 1120/3	20	¾	50
3	CPVC 1125/3	25	1	30
4	CPVC 1132/3	32	1¼	20
5	CPVC 1140/3	40	1½	15
6	CPVC 1150/3	50	2	10
CPVC PIPES - SCH 80 (Length: 3mtr.)				
7	CPVC 8065/3	65	2½	5
8	CPVC 8080/3	80	3	3
9	CPVC 80100/3	100	4	2

SR. NO.	PRODUCT CODE	NOMINAL SIZE (mm)	NOMINAL SIZE (inch)	STD.PACK (pcs.)
CPVC PIPES - SDR 11 (Length: 5mtr.)				
19	CPVC 1115/5	15	½	70
20	CPVC 1120/5	20	¾	50
21	CPVC 1125/5	25	1	30
22	CPVC 1132/5	32	1¼	20
23	CPVC 1140/5	40	1½	15
24	CPVC 1150/5	50	2	10
CPVC PIPES - SCH 80 (Length: 5mtr.)				
25	CPVC 8065/5	65	2½	5
26	CPVC 8080/5	80	3	3
27	CPVC 80100/5	100	4	2

SDR 11/SCH 80 - Red Stripe

SR. NO.	PRODUCT CODE	NOMINAL SIZE (mm)	NOMINAL SIZE (inch)	STD.PACK (pcs.)
CPVC PIPES - SDR 13.5 (Length: 3mtr.)				
10	CPVC 1315/3	15	½	70
11	CPVC 1320/3	20	¾	50
12	CPVC 1325/3	25	1	30
13	CPVC 1332/3	32	1¼	20
14	CPVC 1340/3	40	1½	15
15	CPVC 1350/3	50	2	10
CPVC PIPES - SCH 40 (Length: 3mtr.)				
16	CPVC 4065/3	65	2½	5
17	CPVC 4080/3	80	3	3
18	CPVC 40100/3	100	4	2

SR. NO.	PRODUCT CODE	NOMINAL SIZE (mm)	NOMINAL SIZE (inch)	STD.PACK (pcs.)
CPVC PIPES - SDR 13.5 (Length: 5mtr.)				
28	CPVC 1315/5	15	½	70
29	CPVC 1320/5	20	¾	50
30	CPVC 1325/5	25	1	30
31	CPVC 1332/5	32	1¼	20
32	CPVC 1340/5	40	1½	15
33	CPVC 1350/5	50	2	10
CPVC PIPES - SCH 40 (Length: 5mtr.)				
34	CPVC 4065/5	65	2½	5
35	CPVC 4080/5	80	3	3
36	CPVC 40100/5	100	4	2

SDR 13.5/SCH 40 - Brown Stripe

CPVC FITTINGS SDR 11 ASTM D 2846

HSN : 39174000



COUPLER

SR. NO.	PRODUCT CODE	STANDARD SIZE		STD. PACK	
		(mm)	(inch)	Pc./Bag	Pc./Ctn.
37	CPVC 15C	15	1/2	100	1000
38	CPVC 20C	20	3/4	100	700
39	CPVC 25C	25	1	50	300
40	CPVC 32C	32	1 1/4	10	200
41	CPVC 40C	40	1 1/2	10	110
42	CPVC 50C	50	2	10	70
43	CPVC 65C	65	2 1/2	4	-



ELBOW 45°

SR. NO.	PRODUCT CODE	STANDARD SIZE		STD. PACK	
		(mm)	(inch)	Pc./Bag	Pc./Ctn.
59	CPVC 1545E	15	1/2	50	750
60	CPVC 2045E	20	3/4	25	300
61	CPVC 2545E	25	1	20	240
62	CPVC 3245E	32	1 1/4	10	140
63	CPVC 4045E	40	1 1/2	5	80
64	CPVC 5045E	50	2	5	35



ELBOW

SR. NO.	PRODUCT CODE	STANDARD SIZE		STD. PACK	
		(mm)	(inch)	Pc./Bag	Pc./Ctn.
44	CPVC 15E	15	1/2	100	600
45	CPVC 20E	20	3/4	50	550
46	CPVC 25E	25	1	40	240
47	CPVC 32E	32	1 1/4	10	120
48	CPVC 40E	40	1 1/2	10	80
49	CPVC 50E	50	2	5	40



MALE THREAD ADAPTOR

SR. NO.	PRODUCT CODE	STANDARD SIZE		STD. PACK	
		(mm)	(inch)	Pc./Bag	Pc./Ctn.
65	CPVC 15M	15	1/2	100	800
66	CPVC 20M	20	3/4	100	600
67	CPVC 25M	25	1	50	400
68	CPVC 32M	32	1 1/4	10	120
69	CPVC 40M	40	1 1/2	10	120
70	CPVC 50M	50	2	10	60



TEE

SR. NO.	PRODUCT CODE	STANDARD SIZE		STD. PACK	
		(mm)	(inch)	Pc./Bag	Pc./Ctn.
50	CPVC 15T	15	1/2	100	400
51	CPVC 20T	20	3/4	50	350
52	CPVC 25T	25	1	25	175
53	CPVC 32T	32	1 1/4	10	100
54	CPVC 40T	40	1 1/2	10	50
55	CPVC 50T	50	2	5	25
56	CPVC 65T	65	2 1/2	2	-
57	CPVC 80T	80	3	1	-
58	CPVC 100T	100	4	1	-



FEMALE THREAD ADAPTOR

SR. NO.	PRODUCT CODE	STANDARD SIZE		STD. PACK	
		(mm)	(inch)	Pc./Bag	Pc./Ctn.
71	CPVC 15F	15	1/2	50	500
72	CPVC 20F	20	3/4	50	450
73	CPVC 25F	25	1	25	250
74	CPVC 32F	32	1 1/4	10	140
75	CPVC 40F	40	1 1/2	10	100
76	CPVC 50F	50	2	5	50

CPVC FITTINGS SDR 11 ASTM D 2846

HSN : 39174000



END CAP

SR. NO.	PRODUCT CODE	STANDARD SIZE		STD. PACK	
		(mm)	(inch)	Pc./Bag	Pc./Ctn.
77	CPVC 15EC	15	1/2	100	1500
78	CPVC 20EC	20	3/4	100	600
79	CPVC 25EC	25	1	100	300
80	CPVC 32EC	32	1 1/4	25	150
81	CPVC 40EC	40	1 1/2	15	120
82	CPVC 50EC	50	2	5	60
83	CPVC 65EC	65	2 1/2	10	-
84	CPVC 80EC	80	3	10	-
85	CPVC 100EC	100	4	2	-



REDUCER TEE

SR. NO.	PRODUCT CODE	STANDARD SIZE		STD. PACK	
		(mm)	(inch)	Pc./Bag	Pc./Ctn.
101	CPVC 2015RT	20x20x15	3/4 x 3/4 x 1/2	10	150
102	CPVC 2515RT	25x25x15	1 x 1 x 1/2	10	100
103	CPVC 2520RT	25x25x20	1 x 1 x 3/4	10	100
104	CPVC 3215RT	32x32x15	1 1/4 x 1 1/4 x 1/2	10	50
105	CPVC 3220RT	32x32x20	1 1/4 x 1 1/4 x 3/4	10	50
106	CPVC 3225RT	32x32x25	1 1/4 x 1 1/4 x 1	10	50
107	CPVC 4015RT	40x40x15	1 1/2 x 1 1/2 x 1/2	10	30
108	CPVC 4020RT	40x40x20	1 1/2 x 1 1/2 x 3/4	10	30
109	CPVC 4025RT	40x40x25	1 1/2 x 1 1/2 x 1	10	30
110	CPVC 4032RT	40x40x32	1 1/2 x 1 1/2 x 1 1/4	10	30
111	CPVC 5015RT	50x50x15	2 x 2 x 1/2	5	15
112	CPVC 5020RT	50x50x20	2 x 2 x 3/4	5	15
113	CPVC 5025RT	50x50x25	2 x 2 x 1	5	15
114	CPVC 5032RT	50x50x32	2 x 2 x 1 1/4	5	15
115	CPVC 5040RT	50x50x40	2 x 2 x 1 1/2	5	15



REDUCER COUPLER

SR. NO.	PRODUCT CODE	STANDARD SIZE		STD. PACK	
		(mm)	(inch)	Pc./Bag	Pc./Ctn.
86	CPVC 2015RC	20 x 15	3/4 x 1/2	100	500
87	CPVC 2515RC	25 x 15	1 x 1/2	100	300
88	CPVC 2520RC	25 x 20	1 x 3/4	100	400
89	CPVC 3215RC	32 x 15	1 1/4 x 1/2	10	150
90	CPVC 3220RC	32 x 20	1 1/4 x 3/4	10	150
91	CPVC 3225RC	32 x 25	1 1/4 x 1	10	230
92	CPVC 4015RC	40 x 15	1 1/2 x 1/2	10	100
93	CPVC 4020RC	40 x 20	1 1/2 x 3/4	10	100
94	CPVC 4025RC	40 x 25	1 1/2 x 1	10	100
95	CPVC 4032RC	40 x 32	1 1/2 x 1 1/4	10	120
96	CPVC 5015RC	50 x 15	2 x 1/2	5	50
97	CPVC 5020RC	50 x 20	2 x 3/4	5	50
98	CPVC 5025RC	50 x 25	2 x 1	5	50
99	CPVC 5032RC	50 x 32	2 x 1 1/4	5	50
100	CPVC 5040RC	50 x 40	2 x 1 1/2	5	100



REDUCER ELBOW

SR. NO.	PRODUCT CODE	STANDARD SIZE		STD. PACK	
		(mm)	(inch)	Pc./Bag	Pc./Ctn.
116	CPVC 2015RE	20 x 15	3/4 x 1/2	10	250
117	CPVC 2520RE	25 x 20	1 x 3/4	10	250



REDUCER MTA

SR. NO.	PRODUCT CODE	STANDARD SIZE		STD. PACK	
		(mm)	(inch)	Pc./Bag	Pc./Ctn.
118	CPVC 2015RM	20 x 15	3/4 x 1/2	100	400
119	CPVC 2515RM	25 x 15	1 x 1/2	50	250
120	CPVC 2520RM	25 x 20	1 x 3/4	50	250

CPVC FITTINGS SDR 11 ASTM D 2846

HSN : 39174000



REDUCER BUSHING

SR. NO.	PRODUCT CODE	STANDARD SIZE		STD. PACK	
		(mm)	(inch)	Pc./Bag	Pc./Ctn.
121	CPVC 2015RB	20 x 15	3/4 x 1/2	50	1200
122	CPVC 2515RB	25 x 15	1 x 1/2	50	450
123	CPVC 2520RB	25 x 20	1 x 3/4	50	800
124	CPVC 3215RB	32 x 15	1 1/4 x 1/2	25	250
125	CPVC 3220RB	32 x 20	1 1/4 x 3/4	25	400
126	CPVC 3225RB	32 x 25	1 1/4 x 1	25	400
127	CPVC 4015RB	40 x 15	1 1/2 x 1/2	10	250
128	CPVC 4020RB	40 x 20	1 1/2 x 3/4	10	250
129	CPVC 4025RB	40 x 25	1 1/2 x 1	10	250
130	CPVC 4032RB	40 x 32	1 1/2 x 1 1/4	10	250
131	CPVC 5015RB	50 x 15	2 x 1/2	10	60
132	CPVC 5020RB	50 x 20	2 x 3/4	10	60
133	CPVC 5025RB	50 x 25	2 x 1	10	60
134	CPVC 5032RB	50 x 32	2 x 1 1/4	10	60
135	CPVC 5040RB	50 x 40	2 x 1 1/2	10	60



CROSS TEE

SR. NO.	PRODUCT CODE	STANDARD SIZE		STD. PACK	
		(mm)	(inch)	Pc./Bag	Pc./Ctn.
148	CPVC 15CT	15	1/2	25	300
149	CPVC 20CT	20	3/4	10	120
150	CPVC 25CT	25	1	5	60
151	CPVC 32CT	32	1 1/4	2	60
152	CPVC 40CT	40	1 1/2	2	30
153	CPVC 50CT	50	2	2	20



STEP OVER BEND

SR. NO.	PRODUCT CODE	STANDARD SIZE		STD. PACK	
		(mm)	(inch)	Pc./Bag	Pc./Ctn.
154	CPVC 15SB	15	1/2	10	120
155	CPVC 20SB	20	3/4	10	60
156	CPVC 25SB	25	1	5	30



TRANSITION BUSHING

SR. NO.	PRODUCT CODE	STANDARD SIZE		STD. PACK	
		(mm)	(inch)	Pc./Bag	Pc./Ctn.
136	CPVC 15TB	15 x 15	1/2 x 1/2	100	1200
137	CPVC 20TB	20 x 20	3/4 x 3/4	50	500
138	CPVC 25TB	25 x 25	1 x 1	25	300
139	CPVC 32TB	32 x 32	1 1/4 x 1 1/4	15	150
140	CPVC 40TB	40 x 40	1 1/2 x 1 1/2	10	100
141	CPVC 50TB	50 x 50	2 x 2	10	60



ELBOW

SR. NO.	PRODUCT CODE	STANDARD SIZE		STD. PACK	
		(mm)	(inch)	Pc./Bag	Pc./Ctn.
157	CPVC 15BE	15 x 15	1/2 x 1/2	25	250
158	CPVC 20BE	20 x 20	3/4 x 3/4	15	150
159	CPVC 25BE	25 x 25	1 x 1	10	80

(BRASS)



UNION

SR. NO.	PRODUCT CODE	STANDARD SIZE		STD. PACK	
		(mm)	(inch)	Pc./Bag	Pc./Ctn.
142	CPVC 15U	15	1/2	25	250
143	CPVC 20U	20	3/4	10	140
144	CPVC 25U	25	1	5	75
145	CPVC 32U	32	1 1/4	5	50
146	CPVC 40U	40	1 1/2	5	30
147	CPVC 50U	50	2	2	16



ELBOW

SR. NO.	PRODUCT CODE	STANDARD SIZE		STD. PACK	
		(mm)	(inch)	Pc./Bag	Pc./Ctn.
160	CPVC 15BEW	15 x 15	1/2 x 1/2	25	200
161	CPVC 20BEW	20 x 20	3/4 x 3/4	10	100
162	CPVC 25BEW	25 x 25	1 x 1	5	60

(BRASS)

WALL MOUNTING

CPVC FITTINGS SDR 11 ASTM D 2846

HSN : 39174000



TEE

SR. NO.	PRODUCT CODE	STANDARD SIZE		STD. PACK	
		(mm)	(inch)	Pc./Bag	Pc./Ctn.
163	CPVC 15BT	15x15x15	1/2x1/2x1/2	25	250
164	CPVC 20BT	20x20x20	3/4x3/4x3/4	25	125
165	CPVC 25BT	25x25x25	1x1x1	5	60

(BRASS)



MTA

SR. NO.	PRODUCT CODE	STANDARD SIZE		STD. PACK	
		(mm)	(inch)	Pc./Bag	Pc./Ctn.
166	CPVC 15BM	15	1/2	25	300
167	CPVC 20BM	20	3/4	20	200
168	CPVC 25BM	25	1	10	100
169	CPVC 32BM	32	1 1/4	5	60
170	CPVC 40BM	40	1 1/2	5	40
171	CPVC 50BM	50	2	2	20

(BRASS)



FTA

SR. NO.	PRODUCT CODE	STANDARD SIZE		STD. PACK	
		(mm)	(inch)	Pc./Bag	Pc./Ctn.
172	CPVC 15BF	15	1/2	25	300
173	CPVC 20BF	20	3/4	20	200
174	CPVC 25BF	25	1	10	100
175	CPVC 32BF	32	1 1/4	5	60
176	CPVC 40BF	40	1 1/2	5	50
177	CPVC 50BF	50	2	2	20

(BRASS)



R - ELBOW

SR. NO.	PRODUCT CODE	STANDARD SIZE		STD. PACK	
		(mm)	(inch)	Pc./Bag	Pc./Ctn.
178	CPVC 2015RBE	20 x 15	3/4 x 1/2	25	200
179	CPVC 2515RBE	25 x 15	1 x 1/2	25	125
180	CPVC 2520RBE	25 x 20	1 x 3/4	10	120

(BRASS)



R - ELBOW

SR. NO.	PRODUCT CODE	STANDARD SIZE		STD. PACK	
		(mm)	(inch)	Pc./Bag	Pc./Ctn.
181	CPVC 2015RBEW	20 x 15	3/4 x 1/2	15	150

(BRASS)

WALL MOUNTING



R - TEE

SR. NO.	PRODUCT CODE	STANDARD SIZE		STD. PACK	
		(mm)	(inch)	Pc./Bag	Pc./Ctn.
182	CPVC 2015RBT	20 x 15	3/4 x 1/2	25	125
183	CPVC 2515RBT	25 x 15	1 x 1/2	10	80
184	CPVC 2520RBT	25 x 20	1 x 3/4	10	80

(BRASS)



R - MTA

SR. NO.	PRODUCT CODE	STANDARD SIZE		STD. PACK	
		(mm)	(inch)	Pc./Bag	Pc./Ctn.
185	CPVC 1520RBM	15 x 20	1/2 x 3/4	25	250
186	CPVC 2015RBM	20 x 15	3/4 x 1/2	25	250
187	CPVC 2515RBM	25 x 15	1 x 1/2	20	200
188	CPVC 2520RBM	25 x 20	1 x 3/4	20	200

(BRASS)



R - FTA

SR. NO.	PRODUCT CODE	STANDARD SIZE		STD. PACK	
		(mm)	(inch)	Pc./Bag	Pc./Ctn.
189	CPVC 1520RBF	15 x 20	1/2 x 3/4	25	250
190	CPVC 2015RBF	20 x 15	3/4 x 1/2	25	250
191	CPVC 2515RBF	25 x 15	1 x 1/2	10	160
192	CPVC 2520RBF	25 x 20	1 x 3/4	10	160

(BRASS)

CPVC FITTINGS SDR 11 ASTM D 2846

HSN : 39174000



TANK NIPPLE

SR. NO.	PRODUCT CODE	STANDARD SIZE		STD. PACK	
		(mm)	(inch)	Pc./Bag	Pc./Ctn.
193	CPVC 15TN	15	½	25	150
194	CPVC 20TN	20	¾	25	200
195	CPVC 25TN	25	1	10	100
196	CPVC 32TN	32	1¼	5	60
197	CPVC 40TN	40	1½	5	40
198	CPVC 50TN	50	2	5	35



VAN STONE FLANGE

SR. NO.	PRODUCT CODE	STANDARD SIZE		STD. PACK	
		(mm)	(inch)	Pc./Bag	Pc./Ctn.
208	CPVC 65VF	65	2½	2	-
209	CPVC 80VF	80	3	2	-
210	CPVC 100VF	100	4	2	-



END PLUG

SR. NO.	PRODUCT CODE	STANDARD SIZE		STD. PACK	
		(mm)	(inch)	Pc./Bag	Pc./Ctn.
199	CPVC 15EP	15	½	100	-



POWDER COATED METAL STRAP

SR. NO.	PRODUCT CODE	STANDARD SIZE		STD. PACK	
		(mm)	(inch)	Pc./Bag	Pc./Ctn.
211	CPVC 15MS	15	½	10	500
212	CPVC 20MS	20	¾	10	500
213	CPVC 25MS	25	1	10	500
214	CPVC 32MS	32	1¼	10	300
215	CPVC 40MS	40	1½	10	200
216	CPVC 50MS	50	2	10	200

HSN: 73072900



BALL VALVE

SR. NO.	PRODUCT CODE	STANDARD SIZE		STD. PACK	
		(mm)	(inch)	Pc./Bag	Pc./Ctn.
200	CPVC 15BVI	15	½	20	100
201	CPVC 20BVI	20	¾	15	75
202	CPVC 25BVI	25	1	10	50
203	CPVC 32BVI	32	1¼	5	25
204	CPVC 40BVI	40	1½	4	20
205	CPVC 50BVI	50	2	2	12
206	CPVC 65BVI	65	2½	1	-
207	CPVC 80BVI	80	3	1	-

HSN: 84818090



CPVC SOLVENT CEMENT

SR. NO.	PRODUCT CODE	STANDARD SIZE		STD. PACK	
		(ml)		Pc./Box	Pc./Ctn.
217	CPVC SL59	59		30	240
218	CPVC SL118	118		24	144
219	CPVC SL237	237		24	96
220	CPVC SL473	473		12	48

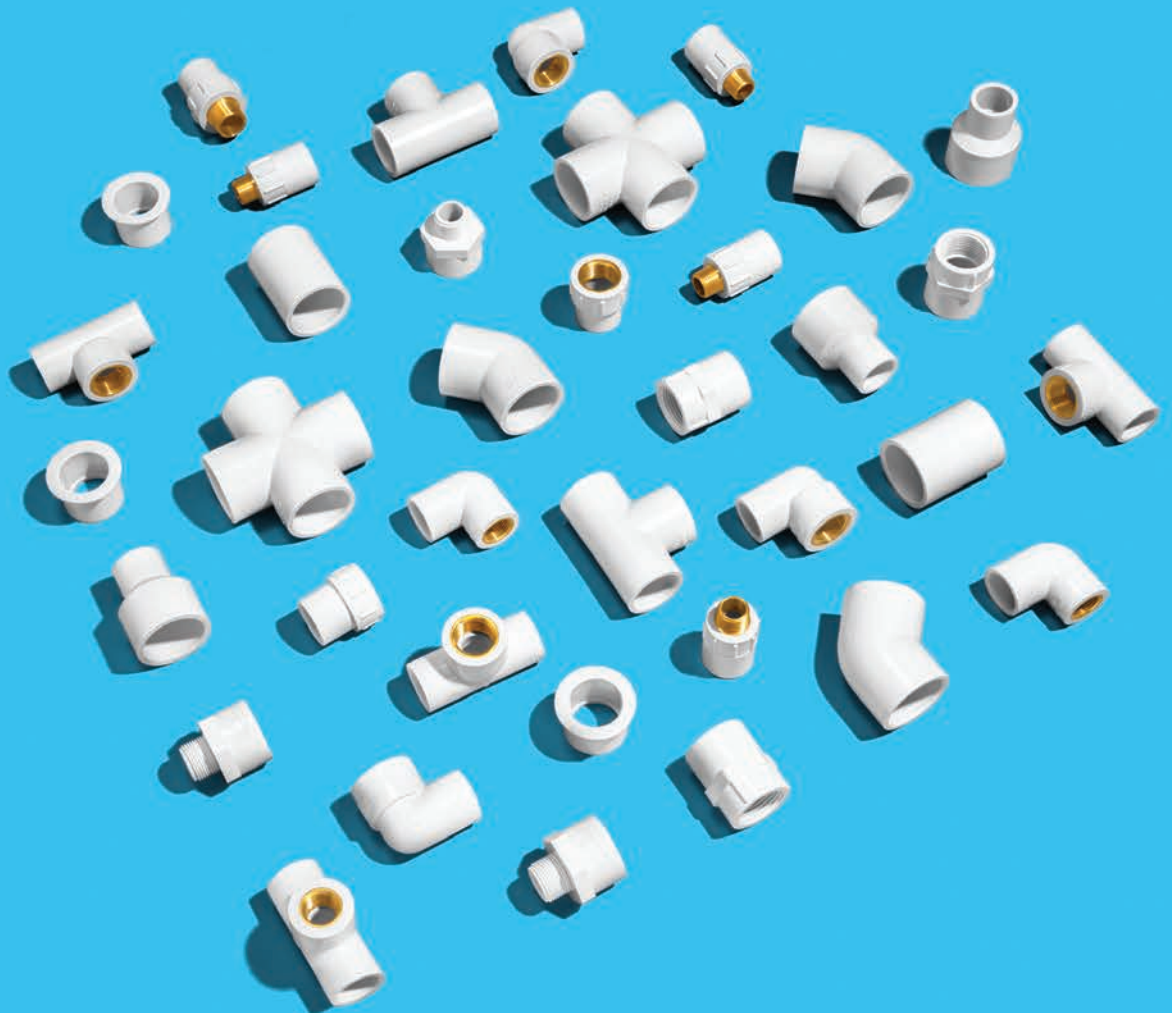
(TIN PACKING)

HSN: 35061000



ASTM (uPVC)
PIPES & FITTINGS

Precision ASTM (uPVC) Pipes and Fittings are manufactured from a specially formulated unplasticised polyvinyl chloride compound. These pipes and fittings are tough and durable with high tensile and impact strength and are manufactured in accordance to ASTM (uPVC) D1785 –SCH 40 & SCH 80 and Fittings to ASTM (uPVC) D 2476 – SCH 80





APPLICATIONS

Channelising potable water supply in homes, apartments, hotels, commercial complex and hospitals.

FEATURES



Various Diameters & Grades



Fire retardant & corrosion free



Easy & quick installation



Chemical resistant



UV stabilized

- Economical, maintenance free.
- Heat efficient and lower Installation cost.
- Low thermal expansion.
- Hygienic and environment friendly.
- Services temperature upto 60°C.

COLOUR:



ASTM (uPVC) D 1785 / SCH 40 PIPES

Nominal Size		Nominal OD mm	Wall Thickness		Pressure Rating at 23°C kg/cm ²
Inch	mm		Min	Max	
1/2	15	21.24	2.77	3.28	41.4
3/4	20	26.57	2.87	3.38	33.1
1	25	33.27	3.38	3.89	31.0
1 1/4	32	42.03	3.56	4.07	25.5
1 1/2	40	48.11	3.68	4.19	22.8
2	50	60.17	3.91	4.42	19.3
2 1/2	65	73.02	5.16	5.77	21.10
3	80	88.9	5.49	6.17	18.28
4	100	114.3	6.02	6.73	15.47

ASTM (uPVC) D 1785 / SCH 80 PIPES

Nominal Size		Nominal OD mm	Wall Thickness		Pressure Rating at 23°C kg/cm ²
Inch	mm		Min	Max	
1/2	15	21.24	3.73	4.24	58.6
3/4	20	26.57	3.91	4.42	47.6
1	25	33.27	4.55	5.08	43.4
1 1/4	32	42.03	4.85	5.43	35.9
1 1/2	40	48.11	5.08	5.69	32.4
2	50	60.17	5.54	6.20	27.6
2 1/2	65	73.02	7.01	7.85	29.54
3	80	88.9	7.62	8.53	26.02
4	100	114.3	8.56	9.58	22.50

MINIMUM DIMENSIONS FROM CENTER TO END OF SOCKET (LAYING LENGTH)

uPVC SCH 80 Pipe Fittings

inch	mm	inch	mm	inch	mm	inch	mm
1/2	15	1/2	12.70	1/2	6.35	3/32	2.38
3/4	20	9/16	14.29	5/16	7.94	3/32	2.38
1	25	11/16	17.46	5/16	7.94	3/32	2.38
1 1/4	32	7/8	22.22	1/8	9.53	3/32	2.38
1 1/2	40	1	25.40	7/16	11.11	3/32	2.38
2	50	1 1/4	31.75	5/8	15.88	3/32	2.38

DIMENSIONS FOR TAPERED SOCKET OF uPVC SCH 80 PIPES FITTINGS

Nom Size	Socket Entrance				Socket Bottom				Socket Entrance		ID		Wall Thickness				Entrance	
	Diameter inch/mm				Diameter inch/mm				inch	mm	inch	mm	Socket		Socket Bottom		F	F
Inch	Dia	Dia	A Tole	A Tole	B Aver	B Aver	B Tole	B Tole	C min	C min	D min	D min	EA min	EA min	EB min	EB min	F	F
1/2	0.848	21.54	0.004	0.10	0.836	21.23	0.004	0.10	0.875	22.22	0.502	12.75	0.147	3.73	0.185	4.70	0.03	0.79
3/4	1.058	26.87	0.004	0.10	1.046	26.57	0.004	0.10	1.000	25.40	0.698	17.73	0.154	3.91	0.195	4.95	0.03	0.79
1	1.325	33.65	0.005	0.13	1.310	33.27	0.005	0.13	1.125	28.58	0.911	23.14	0.179	4.55	0.225	5.72	0.06	1.59
1 1/4	1.670	42.42	0.005	0.13	1.655	42.04	0.005	0.13	1.250	31.75	1.227	31.17	0.191	4.85	0.239	6.07	0.06	1.59
1 1/2	1.912	48.56	0.006	0.15	1.894	48.11	0.006	0.15	1.375	34.93	1.446	36.73	0.200	5.08	0.250	6.35	0.06	1.59
2	2.387	60.63	0.006	0.15	2.369	60.17	0.006	0.15	1.500	38.10	1.881	47.78	0.218	5.54	0.275	6.99	0.06	1.59
2 1/2	2.889	73.38	0.007	0.18	2.868	72.85	0.007	0.18	1.75	44.45	2.25	57.15	0.276	7.01	0.345	8.76	0.9	2.3
3	3.516	89.31	0.008	0.20	3.492	88.70	0.008	0.20	1.875	47.63	2.82	71.63	0.3	7.62	0.375	9.53	0.9	2.3
4	4.518	114.76	0.009	0.23	4.491	114.07	0.009	0.23	2.25	57.15	3.737	94.92	0.337	8.56	0.42	10.67	0.9	2.3

ASTM (uPVC) D 1785 PIPES

HSN: 39172390

SR. NO.	PRODUCT CODE	NOMINAL SIZE (mm)	NOMINAL SIZE (inch)	STD.PACK (pcs.)
ASTM (uPVC) D 1785 / SCH 40 PIPES Length:3 mtr				
221	ASTM 4015/3	15	1/2	50
222	ASTM 4020/3	20	3/4	40
223	ASTM 4025/3	25	1	30
224	ASTM 4032/3	32	1 1/4	20
225	ASTM 4040/3	40	1 1/2	15
226	ASTM 4050/3	50	2	10
227	ASTM 4065/3	65	2 1/2	5
228	ASTM 4080/3	80	3	3
229	ASTM 40100/3	100	4	2

SR. NO.	PRODUCT CODE	NOMINAL SIZE (mm)	NOMINAL SIZE (inch)	STD.PACK (pcs.)
ASTM (uPVC) D 1785 / SCH 80 PIPES Length:3 mtr				
230	ASTM 8015/3	15	1/2	50
231	ASTM 8020/3	20	3/4	40
232	ASTM 8025/3	25	1	30
233	ASTM 8032/3	32	1 1/4	20
234	ASTM 8040/3	40	1 1/2	15
235	ASTM 8050/3	50	2	10
236	ASTM 8065/3	65	2 1/2	5
237	ASTM 8080/3	80	3	3
238	ASTM 80100/3	100	4	2

SR. NO.	PRODUCT CODE	NOMINAL SIZE (mm)	NOMINAL SIZE (inch)	STD.PACK (pcs.)
ASTM (uPVC) D 1785 / SCH 40 PIPES Length:6 mtr				
239	ASTM 4015/6	15	1/2	30
240	ASTM 4020/6	20	3/4	25
241	ASTM 4025/6	25	1	20
242	ASTM 4032/6	32	1 1/4	10
243	ASTM 4040/6	40	1 1/2	10
244	ASTM 4050/6	50	2	5
245	ASTM 4065/6	65	2 1/2	5
246	ASTM 4080/6	80	3	3
247	ASTM 40100/6	100	4	2

SR. NO.	PRODUCT CODE	NOMINAL SIZE (mm)	NOMINAL SIZE (inch)	STD.PACK (pcs.)
ASTM (uPVC) D 1785 / SCH 80 PIPES Length:6 mtr				
248	ASTM 8015/6	15	1/2	30
249	ASTM 8020/6	20	3/4	25
250	ASTM 8025/6	25	1	20
251	ASTM 8032/6	32	1 1/4	10
252	ASTM 8040/6	40	1 1/2	10
253	ASTM 8050/6	50	2	5
254	ASTM 8065/6	65	2 1/2	5
255	ASTM 8080/6	80	3	3
256	ASTM 80100/6	100	4	2

SCH 40 - Blue Stripe

SCH 80 - Red Stripe

ASTM (uPVC) D 2467 / SCH 80 FITTINGS

HSN : 39174000



COUPLER

SR. NO.	PRODUCT CODE	STANDARD SIZE		STD. PACK	
		(mm)	(inch)	Pc./Bag	Pc./Ctn.
257	ASTM 15C	15	1/2	50	550
258	ASTM 20C	20	3/4	50	350
259	ASTM 25C	25	1	25	200
260	ASTM 32C	32	1 1/4	10	100
261	ASTM 40C	40	1 1/2	10	100
262	ASTM 50C	50	2	5	60



ELBOW 45°

SR. NO.	PRODUCT CODE	STANDARD SIZE		STD. PACK	
		(mm)	(inch)	Pc./Bag	Pc./Ctn.
275	ASTM 1545E	15	1/2	25	500
276	ASTM 2045E	20	3/4	25	300
277	ASTM 2545E	25	1	25	150
278	ASTM 3245E	32	1 1/4	10	100
279	ASTM 4045E	40	1 1/2	10	80
280	ASTM 5045E	50	2	5	45



ELBOW

SR. NO.	PRODUCT CODE	STANDARD SIZE		STD. PACK	
		(mm)	(inch)	Pc./Bag	Pc./Ctn.
263	ASTM 15E	15	1/2	50	400
264	ASTM 20E	20	3/4	50	250
265	ASTM 25E	25	1	25	150
266	ASTM 32E	32	1 1/4	10	80
267	ASTM 40E	40	1 1/2	10	50
268	ASTM 50E	50	2	5	35



MALE THREAD ADAPTOR

SR. NO.	PRODUCT CODE	STANDARD SIZE		STD. PACK	
		(mm)	(inch)	Pc./Bag	Pc./Ctn.
281	ASTM 15M	15	1/2	50	850
282	ASTM 20M	20	3/4	25	750
283	ASTM 25M	25	1	25	300
284	ASTM 32M	32	1 1/4	10	240
285	ASTM 40M	40	1 1/2	10	160
286	ASTM 50M	50	2	5	100



TEE

SR. NO.	PRODUCT CODE	STANDARD SIZE		STD. PACK	
		(mm)	(inch)	Pc./Bag	Pc./Ctn.
269	ASTM 15T	15	1/2	50	250
270	ASTM 20T	20	3/4	25	175
271	ASTM 25T	25	1	20	100
272	ASTM 32T	32	1 1/4	10	50
273	ASTM 40T	40	1 1/2	5	40
274	ASTM 50T	50	2	2	24



FEMALE THREAD ADAPTOR

SR. NO.	PRODUCT CODE	STANDARD SIZE		STD. PACK	
		(mm)	(inch)	Pc./Bag	Pc./Ctn.
287	ASTM 15F	15	1/2	25	625
288	ASTM 20F	20	3/4	10	400
289	ASTM 25F	25	1	10	280
290	ASTM 32F	32	1 1/4	5	140
291	ASTM 40F	40	1 1/2	10	100
292	ASTM 50F	50	2	5	70

ASTM (uPVC) D 2467 / SCH 80 FITTINGS

HSN : 39174000



REDUCER COUPLER

SR. NO.	PRODUCT CODE	STANDARD SIZE		STD. PACK	
		(mm)	(inch)	Pc./Bag	Pc./Ctn.
293	ASTM 2015RC	20 x 15	¾ x ½	25	400
294	ASTM 2515RC	25 x 15	1 x ½	25	250
295	ASTM 2520RC	25 x 20	1 x ¾	25	225
296	ASTM 3215RC	32 x 15	1¼ x ½	25	150
297	ASTM 3220RC	32 x 20	1¼ x ¾	25	150
298	ASTM 3225RC	32 x 25	1¼ x 1	25	125
299	ASTM 4015RC	40 x 15	1½ x ½	10	120
300	ASTM 4020RC	40 x 20	1½ x ¾	10	120
301	ASTM 4025RC	40 x 25	1½ x 1	10	100
302	ASTM 4032RC	40 x 32	1½ x 1¼	10	100
303	ASTM 5015RC	50 x 15	2 x ½	10	70
304	ASTM 5020RC	50 x 20	2 x ¾	10	70
305	ASTM 5025RC	50 x 25	2 x 1	10	70
306	ASTM 5032RC	50 x 32	2 x 1¼	10	70
307	ASTM 5040RC	50 x 40	2 x 1½	5	70



REDUCER TEE

SR. NO.	PRODUCT CODE	STANDARD SIZE		STD. PACK	
		(mm)	(inch)	Pc./Bag	Pc./Ctn.
316	ASTM 2015RT	20x20x15	¾ x ¾ x ½	25	175
317	ASTM 2515RT	25x25x15	1 x 1 x ½	25	100
318	ASTM 2520RT	25x25x20	1 x 1 x ¾	25	100
319	ASTM 3215RT	32x32x15	1¼ x 1¼ x ½	10	70
320	ASTM 3220RT	32x32x20	1¼ x 1¼ x ¾	10	70
321	ASTM 3225RT	32x32x25	1¼ x 1¼ x 1	10	60
322	ASTM 4015RT	40x40x15	1½ x 1½ x ½	5	20
323	ASTM 4020RT	40x40x20	1½ x 1½ x ¾	5	20
324	ASTM 4025RT	40x40x25	1½ x 1½ x 1	5	20
325	ASTM 4032RT	40x40x32	1½ x 1½ x 1¼	5	20
326	ASTM 5015RT	50x50x15	2 x 2 x ½	5	10
327	ASTM 5020RT	50x50x20	2 x 2 x ¾	5	10
328	ASTM 5025RT	50x50x25	2 x 2 x 1	5	10
329	ASTM 5032RT	50x50x32	2 x 2 x 1¼	5	10
330	ASTM 5040RT	50x50x40	2 x 2 x 1½	5	10



END CAP

SR. NO.	PRODUCT CODE	STANDARD SIZE		STD. PACK	
		(mm)	(inch)	Pc./Bag	Pc./Ctn.
308	ASTM 15EC	15	½	25	1000
309	ASTM 20EC	20	¾	25	700
310	ASTM 25EC	25	1	25	375
311	ASTM 32EC	32	1¼	10	250
312	ASTM 40EC	40	1½	10	200
313	ASTM 50EC	50	2	5	100
314	ASTM 65EC	65	2½	10	-
315	ASTM 80EC	80	3	10	-



REDUCER BUSHING

SR. NO.	PRODUCT CODE	STANDARD SIZE		STD. PACK	
		(mm)	(inch)	Pc./Bag	Pc./Ctn.
331	ASTM 2015RB	20 x 15	¾ x ½	50	1000
332	ASTM 2515RB	25 x 15	1 x ½	25	600
333	ASTM 2520RB	25 x 20	1 x ¾	50	600
334	ASTM 3225RB	32 x 25	1¼ x 1	25	300
335	ASTM 4015RB	40 x 15	1½ x ½	10	250
336	ASTM 4020RB	40 x 20	1½ x ¾	10	250
337	ASTM 4025RB	40 x 25	1½ x 1	10	250
338	ASTM 4032RB	40 x 32	1½ x 1¼	10	250
339	ASTM 5015RB	50 x 15	2 x ½	10	120
340	ASTM 5020RB	50 x 20	2 x ¾	10	120
341	ASTM 5025RB	50 x 25	2 x 1	10	120
342	ASTM 5032RB	50 x 32	2 x 1¼	10	120
343	ASTM 5040RB	50 x 40	2 x 1½	10	120

ASTM (uPVC) D 2467 / SCH 80 FITTINGS

HSN : 39174000



REDUCER ELBOW

SR. NO.	PRODUCT CODE	STANDARD SIZE		STD. PACK	
		(mm)	(inch)	Pc./Bag	Pc./Ctn.
344	ASTM 2015RE	20 x 15	¾ x ½	25	250
345	ASTM 2515RE	25 x 15	1 x ½	25	200
346	ASTM 2520RE	25 x 20	1 x ¾	25	150



CROSS TEE

SR. NO.	PRODUCT CODE	STANDARD SIZE		STD. PACK	
		(mm)	(inch)	Pc./Bag	Pc./Ctn.
356	ASTM 15CT	15	½	25	200
357	ASTM 20CT	20	¾	10	120
358	ASTM 25CT	25	1	10	80
359	ASTM 32CT	32	1¼	5	45
360	ASTM 40CT	40	1½	5	30
361	ASTM 50CT	50	2	2	20



REDUCER MTA

SR. NO.	PRODUCT CODE	STANDARD SIZE		STD. PACK	
		(mm)	(inch)	Pc./Bag	Pc./Ctn.
347	ASTM 2015RM	20 x 15	¾ x ½	10	600
348	ASTM 2515RM	25 x 15	1 x ½	15	420
349	ASTM 2520RM	25 x 20	1 x ¾	15	420



STEP OVER BEND

SR. NO.	PRODUCT CODE	STANDARD SIZE		STD. PACK	
		(mm)	(inch)	Pc./Bag	Pc./Ctn.
362	ASTM 15SB	15	½	5	75
363	ASTM 20SB	20	¾	10	40
364	ASTM 25SB	25	1	5	25



UNION

SR. NO.	PRODUCT CODE	STANDARD SIZE		STD. PACK	
		(mm)	(inch)	Pc./Bag	Pc./Ctn.
350	ASTM 15U	15	½	10	250
351	ASTM 20U	20	¾	10	150
352	ASTM 25U	25	1	5	100
353	ASTM 32U	32	1¼	5	60
354	ASTM 40U	40	1½	5	50
355	ASTM 50U	50	2	5	25



ELBOW

SR. NO.	PRODUCT CODE	STANDARD SIZE		STD. PACK	
		(mm)	(inch)	Pc./Bag	Pc./Ctn.
365	ASTM 15BE	15 x 15	½ x ½	20	160
366	ASTM 20BE	20 x 20	¾ x ¾	20	80
367	ASTM 25BE	25 x 25	1 x 1	10	40

(BRASS)



TEE

SR. NO.	PRODUCT CODE	STANDARD SIZE		STD. PACK	
		(mm)	(inch)	Pc./Bag	Pc./Ctn.
368	ASTM 15BT	15x15x15	½ x ½ x ½	25	100
369	ASTM 20BT	20x20x20	¾ x ¾ x ¾	5	65
370	ASTM 25BT	25x25x25	1 x 1 x 1	10	40

(BRASS)

ASTM (uPVC) D 2467 / SCH 80 FITTINGS

HSN : 39174000



MTA

SR. NO.	PRODUCT CODE	STANDARD SIZE		STD. PACK	
		(mm)	(inch)	Pc./Bag	Pc./Ctn.
371	ASTM 15BM	15	1/2	10	180
372	ASTM 20BM	20	3/4	10	120
373	ASTM 25BM	25	1	5	75
374	ASTM 32BM	32	1 1/4	5	50
375	ASTM 40BM	40	1 1/2	5	40
376	ASTM 50BM	50	2	2	24

(BRASS)



R-TEE

SR. NO.	PRODUCT CODE	STANDARD SIZE		STD. PACK	
		(mm)	(inch)	Pc./Bag	Pc./Ctn.
386	ASTM 2015RBT	20x20x15	3/4x3/4x1/2	10	70
387	ASTM 2515RBT	25x25x15	1x1x1/2	10	40
388	ASTM 2520RBT	25x25x20	1x1x3/4	10	40

(BRASS)



FTA

SR. NO.	PRODUCT CODE	STANDARD SIZE		STD. PACK	
		(mm)	(inch)	Pc./Bag	Pc./Ctn.
377	ASTM 15BF	15	1/2	10	200
378	ASTM 20BF	20	3/4	15	150
379	ASTM 25BF	25	1	5	75
380	ASTM 32BF	32	1 1/4	5	40
381	ASTM 40BF	40	1 1/2	4	32
382	ASTM 50BF	50	2	2	24

(BRASS)



R - MTA

SR. NO.	PRODUCT CODE	STANDARD SIZE		STD. PACK	
		(mm)	(inch)	Pc./Bag	Pc./Ctn.
389	ASTM 2015RBM	20 x 15	3/4 x 1/2	10	150
390	ASTM 2520RBM	25 x 20	1 x 3/4	10	100

(BRASS)



R - FTA

SR. NO.	PRODUCT CODE	STANDARD SIZE		STD. PACK	
		(mm)	(inch)	Pc./Bag	Pc./Ctn.
391	ASTM 1520RBF	15 x 20	1/2 x 3/4	10	160
392	ASTM 2015RBF	20 x 15	3/4 x 1/2	10	180
393	ASTM 2515RBF	25 x 15	1 x 1/2	10	140
394	ASTM 2520RBF	25 x 20	1 x 3/4	10	120

(BRASS)



R - ELBOW

SR. NO.	PRODUCT CODE	STANDARD SIZE		STD. PACK	
		(mm)	(inch)	Pc./Bag	Pc./Ctn.
383	ASTM 2015RBE	20 x 15	3/4 x 1/2	25	100
384	ASTM 2515RBE	25 x 15	1 x 1/2	25	75
385	ASTM 2520RBE	25 x 20	1 x 3/4	5	65

(BRASS)



TANK NIPPLE

SR. NO.	PRODUCT CODE	STANDARD SIZE		STD. PACK	
		(mm)	(inch)	Pc./Bag	Pc./Ctn.
395	ASTM 15TN	15	1/2	10	250
396	ASTM 20TN	20	3/4	10	240
397	ASTM 25TN	25	1	10	120
398	ASTM 32TN	32	1 1/4	10	80
399	ASTM 40TN	40	1 1/2	10	60
400	ASTM 50TN	50	2	10	40

ASTM (uPVC) D 2467 / SCH 80 FITTINGS

HSN : 39174000



BALL VALVE

SR NO	PRODUCT CODE	STANDARD SIZE		STD. PACK	
		(mm)	(inch)	Pc/Bag	Pc/Ctn
401	ASTM 15BVI	15	1/2	15	90
402	ASTM 20BVI	20	3/4	10	70
403	ASTM 25BVI	25	1	8	40
404	ASTM 32BVI	32	1 1/4	5	30
405	ASTM 40BVI	40	1 1/2	4	20
406	ASTM 50BVI	50	2	2	16
407	ASTM 65BVI	65	2 1/2	1	-
408	ASTM 80BVI	80	3	1	-

HSN: 84818090



ASTM (uPVC) SOLVENT CEMENT

SR NO	PRODUCT CODE	STANDARD SIZE	STD. PACK	
		(ml)	Pc/Box	Pc/Ctn
417	ASTM SL59	59	30	240
418	ASTM SL118	118	24	144
419	ASTM SL237	237	24	96
420	ASTM SL473	473	12	48

(TIN PACKING)

HSN: 35061000



VAN STONE FLANGE

SR NO	PRODUCT CODE	STANDARD SIZE		STD. PACK
		(mm)	(inch)	Pc/Bag
409	ASTM 65VF	65	2 1/2	2
410	ASTM 80VF	80	3	2



ASTM (uPVC) SOLVENT CEMENT

SR NO	PRODUCT CODE	STANDARD SIZE	STD. PACK	
		(ml)	Pc/Box	Pc/Ctn
421	ASTM HD 118	118	24	144

(TIN PACKING) HD

HSN: 35061000



POWDER COATED METAL STRAP

SR NO	PRODUCT CODE	STANDARD SIZE		STD. PACK	
		(mm)	(inch)	Pc/Bag	Pc/Ctn
411	ASTM 15MS	15	1/2	10	500
412	ASTM 20MS	20	3/4	10	500
413	ASTM 25MS	25	1	10	500
414	ASTM 32MS	32	1 1/4	10	300
415	ASTM 40MS	40	1 1/2	10	200
416	ASTM 50MS	50	2	10	200

HSN: 73072900



**SEWERAGE WASTE &
RAINWATER (SWR)**
PIPES & FITTINGS

Precision Sewerage Waste & Rainwater (SWR) Pipes and Fittings are manufactured from a specially formulated unplasticised polyvinyl chloride compound. These pipes and fittings are tough and durable with high tensile and impact strength, manufactured in accordance to IS:13592-2013 and fittings to IS 14735-1999. Rubber rings conforms to IS:5382-1985.





APPLICATIONS

Precision Sewerage Waste Rainwater (SWR) Pipes and Fittings are available with 'O' ring joint for quick, efficient and leak free waste discharge systems for homes, apartments, hotels, commercial complex and hospitals.

Type A: For rain water discharge as well as venting.

Type B: For soil and waste discharge.

FEATURES



High quality



Easy and quick installation



UV stabilized



Corrosion-free & chemical resistant



Easy flow due to smooth inner surface

- Economical low maintenance.
- Hygienic and environment friendly.
- Easy access for cleaning and clearing obstructions.

COLOUR:



DIMENSIONS FOR SWR PIPES

Nominal Diameter	Mean Outside Diameter		Outside Diameter at any Point		Wall Thickness			
					Type A		Type B	
DN	Min	Max	Min	Max	Min	Max	Min	Max
75 mm	75.00	75.30	74.10	75.90	1.80	2.20	3.20	3.80
110 mm	110.00	110.40	108.60	111.40	2.20	2.70	3.20	3.80
160 mm	160.00	160.50	158.00	162.00	3.20	3.80	4.00	4.60

IS:13592



2013

RING TYPE - SWR (SEWERAGE, WASTE & RAINWATER) PIPES

SR. NO.	PRODUCT CODE	NORM. SIZE (mm)	STD. LENGTH (feet)
TYPE - A			
422	SWR 75A10SS	75	10
423	SWR 75A10DS	75	10
424	SWR 75A6SS	75	6
425	SWR 75A6DS	75	6
426	SWR 75A4DS	75	4
427	SWR 75A3DS	75	3
428	SWR 75A2DS	75	2
429	SWR 110A10SS	110	10
430	SWR 110A10DS	110	10
431	SWR 110A6SS	110	6
432	SWR 110A6DS	110	6
433	SWR 110A4DS	110	4
434	SWR 110A3DS	110	3
435	SWR 110A2DS	110	2
436	SWR 160A10SS	160	10
437	SWR 160A10DS	160	10
SEWERAGE PIPES (2.5 kgf/cm ²)			
438	SEW 7510SS	75	10
439	SEW 11010SS	110	10

SR. NO.	PRODUCT CODE	NORM. SIZE (mm)	STD. LENGTH (feet)
TYPE - B			
440	SWR 75B10SS	75	10
441	SWR 75B10DS	75	10
442	SWR 75B6SS	75	6
443	SWR 75B6DS	75	6
444	SWR 75B4DS	75	4
445	SWR 75B3DS	75	3
446	SWR 75B2DS	75	2
447	SWR 110B10SS	110	10
448	SWR 110B10DS	110	10
449	SWR 110B6SS	110	6
450	SWR 110B6DS	110	6
451	SWR 110B4DS	110	4
452	SWR 110B3DS	110	3
453	SWR 110B2DS	110	2
454	SWR 160B10SS	160	10
455	SWR 160B10DS	160	10



HSN: 39172390

IS:14735



1999

RING TYPE - SWR (SEWERAGE, WASTE & RAINWATER) FITTINGS

HSN: 39174000



COUPLER

SR. NO.	PRODUCT CODE	SIZE (mm)	STD. PACK Pc./Carton
456	SWR 75C	75	42
457	SWR 110C	110	27



REDUCER COUPLER

SR. NO.	PRODUCT CODE	SIZE (mm)	STD. PACK Pc./Carton
460	SWR 11075RC	110 x 75	60



REPAIR COUPLER

SR. NO.	PRODUCT CODE	SIZE (mm)	STD. PACK Pc./Carton
458	SWR 75CR	75	42
459	SWR 110CR	110	27



CLEANSING PIPE

SR. NO.	PRODUCT CODE	SIZE (mm)	STD. PACK Pc./Carton
461	SWR 75CLP	75	22
462	SWR 110CP	110	15



RING TYPE - SWR (SEWERAGE, WASTE & RAINWATER) FITTINGS

HSN: 39174000



BEND 87.5°

SR. NO.	PRODUCT CODE	SIZE (mm)	STD. PACK Pcs./Carton
463	SWR 75B	75	25
464	SWR 110B	110	28



SINGLE TEE

SR. NO.	PRODUCT CODE	SIZE (mm)	STD. PACK Pcs./Carton
471	SWR 75TD	75	14
472	SWR 110TD	110	16

(DOOR)



BEND 87.5°

SR. NO.	PRODUCT CODE	SIZE (mm)	STD. PACK Pcs./Carton
465	SWR 75BD	75	24
466	SWR 110BD	110	24

(DOOR)



REDUCING SINGLE TEE

SR. NO.	PRODUCT CODE	SIZE (mm)	STD. PACK Pcs./Carton
473	SWR 11075RT	110 x 75	14



SHOE BEND 45°

SR. NO.	PRODUCT CODE	SIZE (mm)	STD. PACK Pcs./Carton
467	SWR 75SB	75	30
468	SWR 110SB	110	20



REDUCING SINGLE TEE

SR. NO.	PRODUCT CODE	SIZE (mm)	STD. PACK Pcs./Carton
474	SWR 11075RTD	110 x 75	11

(DOOR)



SINGLE TEE

SR. NO.	PRODUCT CODE	SIZE (mm)	STD. PACK Pcs./Carton
469	SWR 75T	75	17
470	SWR 110T	110	17



DOUBLE TEE

SR. NO.	PRODUCT CODE	SIZE (mm)	STD. PACK Pcs./Carton
475	SWR 75TT	75	12
476	SWR 110TT	110	14



RING TYPE - SWR (SEWERAGE, WASTE & RAINWATER) FITTINGS

HSN: 39174000



DOUBLE TEE

SR. NO.	PRODUCT CODE	SIZE (mm)	STD. PACK Pc./Carton
477	SWR 75TTD	75	10
478	SWR 110TTD	110	11

(DOOR)



DOUBLE Y

SR. NO.	PRODUCT CODE	SIZE (mm)	STD. PACK Pc./Carton
485	SWR 75YY	75	9
486	SWR 110YY	110	9



SINGLE Y

SR. NO.	PRODUCT CODE	SIZE (mm)	STD. PACK Pc./Carton
479	SWR 75Y	75	13
480	SWR 110Y	110	15
481	SWR 160Y	160	5



DOUBLE Y

SR. NO.	PRODUCT CODE	SIZE (mm)	STD. PACK Pc./Carton
487	SWR 75YYD	75	8
488	SWR 110YYD	110	8

(DOOR)



REDUCING SINGLE Y

SR. NO.	PRODUCT CODE	SIZE (mm)	STD. PACK Pc./Carton
482	SWR 160110RY	160 x 110	5



PIPE CLIP

SR. NO.	PRODUCT CODE	SIZE (mm)	STD. PACK Pc./Carton
489	SWR 75PC	75	350
490	SWR 110PC	110	260



SINGLE Y

SR. NO.	PRODUCT CODE	SIZE (mm)	STD. PACK Pc./Carton
483	SWR 75YD	75	13
484	SWR 110YD	110	13

(DOOR)



VENT COWL

SR. NO.	PRODUCT CODE	SIZE (mm)	STD. PACK Pc./Carton
491	SWR 75VC	75	192
492	SWR 110VC	110	126



RING TYPE - SWR (SEWERAGE, WASTE & RAINWATER) FITTINGS

HSN: 39174000



NAHANI TRAP

SR. NO.	PRODUCT CODE	SIZE (mm)	STD. PACK Pc./Carton
493	SWR 11075NT	110 x 75	48
494	SWR 11090NT	110 x 90	43
495	SWR 110110NT	110 x 110	32

(W/O JALI)



P - TRAP

SR. NO.	PRODUCT CODE	SIZE (mm)	STD. PACK Pc./Carton
499	SWR 110110PT	110 x 110	16
500	SWR 125110PT	125 x 110	12



MULTI FLOOR TRAP

SR. NO.	PRODUCT CODE	SIZE (mm)	STD. PACK Pc./Carton
496	SWR 110MFT	110	20

(W/O SQ. JALI)



Q - TRAP

SR. NO.	PRODUCT CODE	SIZE (mm)	STD. PACK Pc./Carton
501	SWR 110110QT	110 x 110	10
502	SWR 125110QT	125 x 110	10



ROUND JALI

SR. NO.	PRODUCT CODE	SIZE (mm)	STD. PACK Pc./Carton
497	SWR 110NTJ	110	225



S - TRAP

SR. NO.	PRODUCT CODE	SIZE (mm)	STD. PACK Pc./Carton
503	SWR 110110ST	110 x 110	12
504	SWR 125110ST	125 x 110	12



SQUARE JALI

SR. NO.	PRODUCT CODE	SIZE (mm)	STD. PACK Pc./Carton
498	SWR 150MTJ	150 x 150	40



DOOR CAP

SR. NO.	PRODUCT CODE	SIZE (mm)	STD. PACK Pc./Carton
505	SWR 75DC	75	210
506	SWR 110DC	110	100



RING TYPE - SWR (SEWERAGE, WASTE & RAINWATER) FITTINGS

HSN: 39174000



SOCKET PLUG

SR. NO.	PRODUCT CODE	SIZE (mm)	STD. PACK Pc./Carton
507	SWR 75SP	75	120
508	SWR 110SP	110	50



RUBBER RING

SR. NO.	PRODUCT CODE	SIZE (mm)	STD. PACK Pc./Bag
511	SWR 75RR	75	1
512	SWR 110RR	110	1
513	SWR 160RR	160	1

HSN: 40069090



W.C. CONNECTOR WITH LIP RING

SR. NO.	PRODUCT CODE	SIZE (mm)	STD. PACK Pc./Bag
509	SWR 110WCF	110	12

(FABRICATED)



RUBBER LUBRICANT (JAR)

SR. NO.	PRODUCT CODE	SIZE (gm)	STD. PACK Pc./Carton
514	SWR RL100	100	100
515	SWR RL250	250	40
516	SWR RL500	500	20
517	SWR RL1000	1000	10

HSN: 34039900



LIP RING

SR. NO.	PRODUCT CODE	SIZE (mm)	STD. PACK Pc./Bag
510	SWR 110LR	110	1

HSN: 40169320

IS:13592



2013

SELFIT TYPE - SWR (SEWERAGE, WASTE & RAINWATER) PIPES

SR. NO.	PRODUCT CODE	SIZE (mm)	STD. LENGTH (feet)
TYPE - A			
518	SWR 75A20SSP	75	20
519	SWR 75A10SSP	75	10
520	SWR 75A10DSP	75	10
521	SWR 75A6SSP	75	6
522	SWR 75A6DSP	75	6
523	SWR 75A4DSP	75	4
524	SWR 75A3DSP	75	3
525	SWR 75A2DSP	75	2
526	SWR 90A20SSP	90	20
527	SWR 90A10SSP	90	10
528	SWR 110A20SP	110	20
529	SWR 110A10SP	110	10
530	SWR 110A10DP	110	10
531	SWR 110A6SSP	110	6
532	SWR 110A6DSP	110	6
533	SWR 110A4DSP	110	4
534	SWR 110A3DSP	110	3
535	SWR 110A2DSP	110	2
536	SWR 160A20SP	160	20
537	SWR 160A10SP	160	10
538	SWR 160A10DP	160	10
SEWERAGE PIPES (2.5 kgf/cm²)			
539	SEW 7510SSP	75	10
540	SEW 11010SSP	110	10

Special Size

SR. NO.	PRODUCT CODE	SIZE (mm)	STD. LENGTH (feet)
TYPE - B			
541	SWR 75B20SSP	75	20
542	SWR 75B10SSP	75	10
543	SWR 75B10DSP	75	10
544	SWR 75B6SSP	75	6
545	SWR 75B6DSP	75	6
546	SWR 75B4DSP	75	4
547	SWR 75B3DSP	75	3
548	SWR 75B2DSP	75	2
549	SWR 90B20SSP	90	20
550	SWR 90B10SSP	90	10
551	SWR 110B20SP	110	20
552	SWR 110B10SP	110	10
553	SWR 110B10DP	110	10
554	SWR 110B6SSP	110	6
555	SWR 110B6DSP	110	6
556	SWR 110B4DSP	110	4
557	SWR 110B3DSP	110	3
558	SWR 110B2DSP	110	2
559	SWR 160B20SP	160	20
560	SWR 160B10SP	160	10
561	SWR 160B10DP	160	10
SELFIT PIPES (6 kgf/cm²)			
562	SWR 40610SSP	40	10
563	SWR 40620SSP	40	20
564	SWR 50610SSP	50	10
565	SWR 50620SSP	50	20

Special Size



HSN: 39172390

IS:14735



1999

SELFIT TYPE - SWR (SEWERAGE, WASTE & RAINWATER) FITTINGS

HSN: 39174000



COUPLER

SR. NO.	PRODUCT CODE	SIZE (mm)	STD. PACK Pc./Carton
566	SWR 75CP	75	56
567	SWR 110CRP	110	33



REPAIR COUPLER

SR. NO.	PRODUCT CODE	SIZE (mm)	STD. PACK Pc./Carton
568	SWR 75CRP	75	56
569	SWR 110CRPP	110	33



SELFIT TYPE - SWR (SEWERAGE, WASTE & RAINWATER) FITTINGS

HSN: 39174000



BEND 87.5°

SR. NO.	PRODUCT CODE	SIZE (mm)	STD. PACK Pc./Carton
570	SWR 75BP	75	32
571	SWR 110BP	110	20



SINGLE TEE

SR. NO.	PRODUCT CODE	SIZE (mm)	STD. PACK Pc./Carton
578	SWR 75TDP	75	15
579	SWR 110TDP	110	20

(DOOR)



BEND 87.5°

SR. NO.	PRODUCT CODE	SIZE (mm)	STD. PACK Pc./Carton
572	SWR 75BDP	75	24
573	SWR 110BDP	110	30

(DOOR)



DOUBLE TEE

SR. NO.	PRODUCT CODE	SIZE (mm)	STD. PACK Pc./Carton
580	SWR 75TTP	75	14
581	SWR 110TTP	110	16



SHOE BEND 45°

SR. NO.	PRODUCT CODE	SIZE (mm)	STD. PACK Pc./Carton
574	SWR 75SBP	75	48
575	SWR 110SBP	110	35



DOUBLE TEE

SR. NO.	PRODUCT CODE	SIZE (mm)	STD. PACK Pc./Carton
582	SWR 75TTDP	75	11
583	SWR 110TTDP	110	12

(DOOR)



SINGLE TEE

SR. NO.	PRODUCT CODE	SIZE (mm)	STD. PACK Pc./Carton
576	SWR 75TP	75	24
577	SWR 110TP	110	22



SINGLE Y

SR. NO.	PRODUCT CODE	SIZE (mm)	STD. PACK Pc./Carton
584	SWR 75YP	75	15
585	SWR 110YP	110	12



SELFIT TYPE - SWR (SEWERAGE, WASTE & RAINWATER) FITTINGS

HSN: 39174000



SINGLE Y

SR. NO.	PRODUCT CODE	SIZE (mm)	STD. PACK Pc./Carton
586	SWR 75YDP	75	14
587	SWR 110YDP	110	16

(DOOR)



REDUCING SINGLE TEE

SR. NO.	PRODUCT CODE	SIZE (mm)	STD. PACK Pc./Carton
590	SWR 11075TDP	110 x 75	11

(DOOR)



REDUCER COUPLER

SR. NO.	PRODUCT CODE	SIZE (mm)	STD. PACK Pc./Carton
588	SWR 11075RCP	110 x 75	60



CLEANSING PIPE

SR. NO.	PRODUCT CODE	SIZE (mm)	STD. PACK Pc./Carton
591	SWR 75CPP	75	23
592	SWR 110CPP	110	15



REDUCING SINGLE TEE

SR. NO.	PRODUCT CODE	SIZE (mm)	STD. PACK Pc./Carton
589	SWR 11075RTP	110 x 75	14



AGRICULTURE
PIPES & FITTINGS

Precision Agriculture Pipes and Fittings are manufactured from high impact unplasticised polyvinyl chloride compound that is capable of withstanding the most rigorous on-site conditions and exceeding the most stringent requirements as per Indian standards. The product range is manufactured in accordance with Indian Standards IS:4985-2021 and Moulded Fittings to IS:7834-1987. These pipes and fittings are a perfect choice for potable water supply, where ease of installation, maintenance and zero leakages are a priority.





APPLICATIONS

Agriculture and irrigation, potable water supply, construction, industrial and chemical effluent disposal, tube well casing, telecom and power cable/ducting.

FEATURES



Economical



Easy & quick installation



Corrosion free



Fire Resistant



Flexibility



Hygienic



Chemical resistant



Perfect dimensional standards



High flow characteristic



Low thermal conductivity

COLOUR:



GREY



AGRICULTURE SELFIT PIPES

HSN: 39172390

6 mtr

SR NO	PRODUCT CODE	STD. SIZE (mm)
CLASS 1/2.5 kgf/cm ² (length: 6mtr)		
593	SELF90CL1/6	90
594	SELF110CL1/6	110
595	SELF140CL1/6	140
596	SELF160CL1/6	160
597	SELF180CL1/6	180
598	SELF200CL1/6	200
599	SELF225CL1/6	225
CLASS 2/4 kgf/cm ² (length: 6mtr)		
600	SELF63CL2/6	63
601	SELF75CL2/6	75
602	SELF90CL2/6	90
603	SELF110CL2/6	110
604	SELF140CL2/6	140
605	SELF160CL2/6	160
606	SELF180CL2/6	180
607	SELF200CL2/6	200
608	SELF225CL2/6	225
609	SELF250CL2/6	250

SR NO	PRODUCT CODE	STD. SIZE (mm)
CLASS 3/6 kgf/cm ² (length: 6mtr)		
610	SELF40CL3/6	40
611	SELF50CL3/6	50
612	SELF63CL3/6	63
613	SELF75CL3/6	75
614	SELF90CL3/6	90
615	SELF110CL3/6	110
616	SELF140CL3/6	140
617	SELF160CL3/6	160
618	SELF180CL3/6	180
619	SELF200CL3/6	200
620	SELF225CL3/6	225
621	SELF250CL3/6	250
CLASS 5/10 kgf/cm ² (length: 6mtr)		
622	SELF20CL5/6	20
623	SELF25CL5/6	25
624	SELF32CL5/6	32
625	SELF40CL5/6	40
626	SELF50CL5/6	50
627	SELF63CL5/6	63
628	SELF75CL5/6	75
629	SELF90CL5/6	90
630	SELF110CL5/6	110
631	SELF140CL5/6	140
632	SELF160CL5/6	160
633	SELF180CL5/6	180
634	SELF200CL5/6	200
635	SELF225CL5/6	225
636	SELF250CL5/6	250



AGRICULTURE MOULDED FITTINGS

HSN: 39174000



COUPLER

SR. NO.	PRODUCT CODE	STD. SIZE (mm)	STD. PACK Pc./Bag
637	PMIC2010	20	1200
638	PMIC2510	25	1200
639	PMIC3210	32	700
640	PMIC4010	40	500
641	PMIC5010	50	250

10 kgf/cm²



COUPLER

SR. NO.	PRODUCT CODE	STD. SIZE (mm)	STD. PACK Pc./Bag
642	PMIC636	63	125
643	PMIC756	75	80
644	PMIC906	90	50
645	PMIC1106	110	30

6 kgf/cm²



AGRICULTURE MOULDED FITTINGS

HSN: 39174000



ELBOW

SR. NO.	PRODUCT CODE	STD. SIZE (mm)	STD. PACK Pc./Bag
646	PMIE4045	40	150
647	PMIE5045	50	60

45° 10 kgf/cm²



ELBOW

SR. NO.	PRODUCT CODE	STD. SIZE (mm)	STD. PACK Pc./Bag
648	PMIE2010	20	1200
649	PMIE2510	25	900
650	PMIE3210	32	500
651	PMIE4010	40	250
652	PMIE5010	50	125

10 kgf/cm²



ELBOW

SR. NO.	PRODUCT CODE	STD. SIZE (mm)	STD. PACK Pc./Bag
653	PMIE636	63	80
654	PMIE756	75	50
655	PMIE906	90	35
656	PMIE1106	110	15
657	PMIE1406	140	12
658	PMIE1606	160	8

6 kgf/cm²



TEE

SR. NO.	PRODUCT CODE	STD. SIZE (mm)	STD. PACK Pc./Bag
659	PMIT2010	20	900
660	PMIT2510	25	600
661	PMIT3210	32	300
662	PMIT4010	40	200
663	PMIT5010	50	100

10 kgf/cm²



TEE

SR. NO.	PRODUCT CODE	STD. SIZE (mm)	STD. PACK Pc./Bag
664	PMIT636	63	55
665	PMIT756	75	35
666	PMIT906	90	25
667	PMIT1106	110	15
668	PMIT1406	140	8
669	PMIT1606	160	5

6 kgf/cm²



MALE THREAD ADAPTOR

SR. NO.	PRODUCT CODE	STD. SIZE (mm)	STD. PACK Pc./Bag
670	PMTA2010	20	1200
671	PMTA2510	25	1100
672	PMTA3210	32	700

10 kgf/cm²



MALE THREAD ADAPTOR

SR. NO.	PRODUCT CODE	STD. SIZE (mm)	STD. PACK Pc./Bag
673	PMTA406	40	350
674	PMTA506	50	250
675	PMTA636	63	120
676	PMTA756	75	80
677	PMTA906	90	50
678	PMTA1106	110	30

6 kgf/cm²



TAIL PIECE

SR. NO.	PRODUCT CODE	STD. SIZE (mm)	STD. PACK Pc./Bag
688	PMT636	63	150
689	PMT6756	75	120
690	PMT6906	90	80
691	PMT61106	110	50
692	PMT61406	140	30
693	PMT61606	160	15

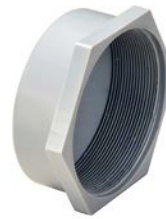
6 kgf/cm²



FEMALE THREAD ADAPTOR

SR. NO.	PRODUCT CODE	STD. SIZE (mm)	STD. PACK Pc./Bag
679	PFTA2010	20	1000
680	PFTA2510	25	1000
681	PFTA3210	32	700

10 kgf/cm²



THREADED END CAP

SR. NO.	PRODUCT CODE	STD. SIZE (mm)	STD. PACK Pc./Bag
694	PTEC406	40	300
695	PTEC506	50	200
696	PTEC636	63	150
697	PTEC756	75	125
698	PTEC906	90	100
699	PTEC1106	110	60

6 kgf/cm²



FEMALE THREAD ADAPTOR

SR. NO.	PRODUCT CODE	STD. SIZE (mm)	STD. PACK Pc./Bag
682	PFTA406	40	400
683	PFTA506	50	200
684	PFTA636	63	120
685	PFTA756	75	80
686	PFTA906	90	50
687	PFTA1106	110	30

6 kgf/cm²



END CAP

SR. NO.	PRODUCT CODE	STD. SIZE (mm)	STD. PACK Pc./Bag
700	PMEC2010	20	1500
701	PMEC2510	25	1500
702	PMEC3210	32	1000

10 kgf/cm²



AGRICULTURE MOULDED FITTINGS

HSN: 39174000



END CAP

SR. NO.	PRODUCT CODE	STD. SIZE (mm)	STD. PACK Pc./Bag
703	PMEC406	40	600
704	PMEC506	50	500
705	PMEC636	63	150
706	PMEC756	75	100
707	PMEC906	90	70
708	PMEC1106	110	50

6 kgf/cm²



REDUCER BUSH

SR. NO.	PRODUCT CODE	STD. SIZE (mm)	STD. PACK Pc./Bag
709	PMRB2520	25 x 20	500
710	PMRB3220	32 x 20	400
711	PMRB3225	32 x 25	400

10 kgf/cm²



REDUCER BUSH

SR. NO.	PRODUCT CODE	SIZE (mm)	STD. PACK Pc./Bag
712	PMRB6340	63 x 40	150
713	PMRB6350	63 x 50	150
714	PMRB9063	90 x 63	80
715	PMRB9075	90 x 75	80
716	PMRB11075	110 x 75	50
717	PMRB11090	110 x 90	50

6 kgf/cm²



REDUCER COUPLER

SR. NO.	PRODUCT CODE	STD. SIZE (mm)	STD. PACK Pc./Bag
718	PMIR2520	25 x 20	1000
719	PMIR3220	32 x 20	750
720	PMIR3225	32 x 25	750

10 kgf/cm²



REDUCER COUPLER

SR. NO.	PRODUCT CODE	STD. SIZE (mm)	STD. PACK Pc./Bag
721	PMIR4020	40 x 20	250
722	PMIR4032	40 x 32	200
723	PMIR5032	50 x 32	300
724	PMIR5040	50 x 40	300
725	PMIR6332	63 x 32	100
726	PMIR6340	63 x 40	100
727	PMIR6350	63 x 50	175
728	PMIR7540	75 x 40	80
729	PMIR7550	75 x 50	80
730	PMIR7563	75 x 63	120
731	PMIR9063	90 x 63	80
732	PMIR9075	90 x 75	80
733	PMIR11063	110 x 63	50
734	PMIR11075	110 x 75	50
735	PMIR11090	110 x 90	50

6 kgf/cm²



REDUCER TEE

SR. NO.	PRODUCT CODE	SIZE (mm)	STD. PACK Pc./Bag
736	PMRT2520	25 x 25 x 20	600
737	PMRT3220	32 x 32 x 20	300
738	PMRT3225	32 x 32 x 25	300

10 kgf/cm²



IS:7834

AGRICULTURE MOULDED FITTINGS

HSN: 39174000



REDUCER TEE

SR. NO.	PRODUCT CODE	STD. SIZE (mm)	STD. PACK Pc./Bag
739	PMRT6340	63 x 63 x 40	55
740	PMRT11075	110 x 110 x 75	15
741	PMRT11090	110 x 110 x 90	15

6 kgf/cm²



ELBOW (L.W.)

SR. NO.	PRODUCT CODE	STD. SIZE (mm)	STD. PACK Pc./Bag
766	PMIE632	63	190
767	PMIE752	75	130
768	PMIE902	90	78
769	PMIE1102	110	42

2.5 kgf/cm²



SERVICE SADDLE

SR. NO.	PRODUCT CODE	STD. SIZE (mm)	STD. PACK Pc./Bag
742	PMIS6320	63 x 20	50
743	PMIS6325	63 x 25	50
744	PMIS6332	63 x 32	50
745	PMIS7520	75 x 20	50
746	PMIS7525	75 x 25	50
747	PMIS7532	75 x 32	50
748	PMIS9020	90 x 20	40
749	PMIS9025	90 x 25	40
750	PMIS9032	90 x 32	40
751	PMIS11020	110 x 20	40
752	PMIS11025	110 x 25	40
753	PMIS11032	110 x 32	40
754	PMIS14020	140 x 20	25
755	PMIS14025	140 x 25	25
756	PMIS14032	140 x 32	25
757	PMIS14040	140 x 40	25
758	PMIS14050	140 x 50	25
759	PMIS14063	140 x 63	25
760	PMIS16020	160 x 20	20
761	PMIS16025	160 x 25	20
762	PMIS16032	160 x 32	20
763	PMIS16040	160 x 40	20
764	PMIS16050	160 x 50	20
765	PMIS16063	160 x 63	20

6 kgf/cm²



TEE (L.W.)

SR. NO.	PRODUCT CODE	STD. SIZE (mm)	STD. PACK Pc./Bag
770	PMIT632	63	150
771	PMIT752	75	96
772	PMIT902	90	58
773	PMIT1102	110	30

2.5 kgf/cm²



AGRICULTURE SOLVENT CEMENT

SR. NO.	PRODUCT CODE	STD. SIZE (ml)	STD. PACK Pc./Carton
774	AGRI B250	250ml	24 96
775	AGRI B500	500ml	12 48
776	AGRI B1L	1L	6 24

TIN PACKING
HSN: 35061000



AGRICULTURE PIPES

HSN: 39172390

DIMENSION OF AGRICULTURE PIPES - IS 4985 - 2021 (all Dimensions in mm)

Nominal Outside Diameter (Nominal Size)	Mean Outside Diameter		Working Pressure, Mpa							
			Class 1 0.25 Mpa		Class 2 0.4 Mpa		Class 3 0.6 Mpa		Class 5 1.0 Mpa	
			Min.	Max.	Min.	Max.	Min.	Max.	Min.	Max.
20	20.0	20.3							1.1	1.5
25	25.0	25.3							1.4	1.8
32	32.0	32.3							1.8	2.2
40	40.0	40.3					1.4	1.8	2.2	2.7
50	50.0	50.3					1.7	2.1	2.8	3.3
63	63.0	63.3			1.5	1.9	2.2	2.7	3.5	4.1
75	75.0	75.3			1.8	2.2	2.6	3.1	4.2	4.9
90	90.0	90.3	1.3	1.7	2.1	2.6	3.1	3.7	5.0	5.7
110	110.0	110.4	1.6	2.0	2.5	3.0	3.7	4.3	6.1	7.1
125	125.0	125.4	1.8	2.2	2.9	3.4	4.3	5.0	6.9	8.0
140	140.0	140.5	2.0	2.4	3.2	3.8	4.8	5.5	7.7	8.9
160	160.0	160.5	2.3	2.8	3.7	4.3	5.4	6.2	8.8	10.2
180	180.0	180.6	2.6	3.1	4.2	4.9	6.1	7.1	9.9	11.4
200	200.0	200.6	2.9	3.4	4.6	5.3	6.8	7.9	11.0	12.7
225	225.0	225.7	3.3	3.9	5.2	6.0	7.6	8.8	12.4	14.3
250	250.0	250.8	3.6	4.2	5.7	6.5	8.5	9.8	13.8	15.9



plumbing@precisionpipes.com
www.precisionpipes.com

We Care +91 77150 00015

PRECISION PLASTIC INDUSTRIES PVT. LTD.

19/D, Nand Jyot Industrial Estate, Safed Pool, Andheri - Kurla Road,
Andheri East, Mumbai 400 072, Maharashtra, India.