



**PRICE LIST**  
OCT 08, 2024

**SAFETY  
MEIN  
SAMJHOTA  
NAHIN.**



# ROUND CONDUIT uPVC PIPES & FITTINGS



## Precision Round Conduit uPVC

**Pipes & Fittings** are manufactured from a specially formulated unplasticated polyvinyl chloride (uPVC) to meet the most stringent Indian and International standards. Our products are made of extra super high impact material which make them safe to use in harsh environments.

The products are manufactured in accordance with IS 9537 - Part 3, BS EN 61386 21 for uPVC conduits, IS 3419:1988 and BS 4607 for uPVC fittings.



## Applications

Channelising concealed and surface wiring.  
Telecommunication and cable ducting.

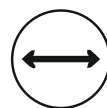
### DIMENSIONS OF ROUND CONDUIT uPVC PIPES IS 9537 - PART 3

Nominal Size (mm)	Outside Diameter (mm)	Tolerance on Outside Diameter (mm)	Inside Diameter (Min.) (mm)		
			Light	Medium	Heavy
20	20	-0.3	17.4	16.9	15.8
25	25	-0.4	22.1	21.4	20.6
32	32	-0.4	28.6	27.8	26.6
40	40	-0.4	35.8	35.4	34.4
50	50	-0.5	45.1	44.3	43.2
63	63	-0.6	57.0	-	-

### #SPECIAL SIZES

19	19	-0.3	16.5	16.0	15.1
----	----	------	------	------	------

## Features



Various Diameters & Grades



Fire retardant & corrosion free



Easy and quick installation



Thermal resistant (-5° C to +60° C)

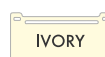


Durable & Impact resistant



Laser Engraved Pipe

- Light, medium and heavy mechanical stress, to suit various applications and site conditions
- Wide range of component maximises application
- Precision circular boxes and adaptable boxes are provided with M4 brass insert with a load suspension capacity of 3 Kgs at +60° C



# ROUND CONDUIT uPVC PIPES (SOCKETED)

HSN : 39172310

IS:9537



Part 3



SR. NO.	PRODUCT CODE	SIZE	STANDARD PACK		NORTH INDIA PACK	RATE Mtr.
		OD (mm)	Pc. x Mtr.	Mtr. / Bdl.	Mtr. / Bdl.	
<b>LMS (LIGHT MECHANICAL STRESS)</b>						
# 1	PRCS 19L	19	100 x 3m	300	-	20.75
# 2	PRCS 19LNI	19	40 x 3m	-	120	20.75
3	PRCS 20L	20	100 x 3m	300	-	22.25
4	PRCS 20LNI	20	40 x 3m	-	120	22.25
5	PRCS 25L	25	100 x 3m	300	-	30.75
6	PRCS 25LNI	25	25 x 3m	-	75	30.75
7	PRCS 32L	32	50 x 3m	150	-	43.25
8	PRCS 32LNI	32	10 x 3m	-	30	43.25
9	PRCS 40L	40	25 x 3m	75	-	69.00
10	PRCS 40LNI	40	5 x 3m	-	15	69.00
11	PRCS 50L	50	20 x 3m	60	-	98.50
12	PRCS 50LNI	50	5 x 3m	-	15	98.50
13	PRCS 63L	63	18 x 3m	54	-	150.00

SR. NO.	PRODUCT CODE	SIZE	STANDARD PACK		NORTH INDIA PACK	RATE Mtr.
		OD (mm)	Pc. x Mtr.	Mtr. / Bdl.	Mtr. / Bdl.	
<b>HMS (HEAVY MECHANICAL STRESS)</b>						
# 26	PRCS 19H	19	100 x 3m	300	-	32.25
# 27	PRCS 19HNI	19	40 x 3m	-	120	32.25
28	PRCS 20H	20	100 x 3m	300	-	34.25
29	PRCS 20HNI	20	40 x 3m	-	120	34.25
30	PRCS 25H	25	50 x 3m	150	-	43.75
31	PRCS 25HNI	25	25 x 3m	-	75	43.75
32	PRCS 32H	32	50 x 3m	150	-	69.00
33	PRCS 32HNI	32	10 x 3m	-	30	69.00
34	PRCS 40H	40	25 x 3m	75	-	90.50
35	PRCS 40HNI	40	5 x 3m	-	15	90.50
36	PRCS 50H	50	20 x 3m	60	-	137.00
37	PRCS 50HNI	50	5 x 3m	-	15	137.00

SR. NO.	PRODUCT CODE	SIZE	STANDARD PACK		NORTH INDIA PACK	RATE Mtr.
		OD (mm)	Pc. x Mtr.	Mtr. / Bdl.	Mtr. / Bdl.	
<b>MMS (MEDIUM MECHANICAL STRESS)</b>						
# 14	PRCS 19M	19	100 x 3m	300	-	23.75
# 15	PRCS 19MNI	19	40 x 3m	-	120	23.75
16	PRCS 20M	20	100 x 3m	300	-	25.00
17	PRCS 20MNI	20	40 x 3m	-	120	25.00
18	PRCS 25M	25	100 x 3m	300	-	35.25
19	PRCS 25MNI	25	25 x 3m	-	75	35.25
20	PRCS 32M	32	50 x 3m	150	-	53.00
21	PRCS 32MNI	32	10 x 3m	-	30	53.00
22	PRCS 40M	40	25 x 3m	75	-	76.00
23	PRCS 40MNI	40	5 x 3m	-	15	76.00
24	PRCS 50M	50	20 x 3m	60	-	115.00
25	PRCS 50MNI	50	5 x 3m	-	15	115.00



# Special Size

## ROUND CONDUIT uPVC PIPES (SOCKETED) CE FRLS

HSN : 39172310  
SPECIAL SIZES



SR. NO.	PRODUCT CODE	SIZE OD (mm)	STANDARD PACK		NORTH INDIA PACK	RATE Mtr.
			Pc x Mtr	Mtr x Bdl		
# 38	PRCS19SPL	19x1mm	100x3m	300	-	16.25
# 39	PRCS19SPLNI	19x1mm	40x3m	-	120	16.25
# 40	PRCS20SPL	20x1mm	100x3m	300	-	17.75
# 41	PRCS20SPLNI	20x1mm	40x3m	-	120	17.75
# 42	PRCS25SPL	25x1mm	100x3m	300	-	22.00
# 43	PRCS25SPLNI	25x1mm	25x3m	-	75	22.00

# Special Size

## BENDING SPRING

HSN : 73201019



SR. NO.	PRODUCT CODE	SIZE OD (mm)	COLOUR	STANDARD PACK		RATE Pc
				Pc/Bag	Pc/Carton	
<b>LIGHT GAUGE</b>						
44	PBS20L	20	Black	10	50	272.00
45	PBS25L	25	Black	5	25	360.00
<b>MEDIUM GAUGE</b>						
46	PBS20M	20	Silver	10	50	272.00
47	PBS25M	25	Silver	5	25	360.00
<b>HEAVY GAUGE</b>						
48	PBS20H	20	Gold	10	50	272.00
49	PBS25H	25	Gold	5	25	360.00

Ø Suitable for 19mm LMS and 19mm MMS conduits also.



# ROUND CONDUIT UPVC PIPE FITTINGS

HSN : 39174000



## CIRCULAR BOX WITHOUT LID

### TERMINAL - 1 WAY CIRCULAR BOX



SR. NO.	PRODUCT CODE	SIZE OD (mm)	STANDARD PACK		RATE Pc
			Pc./Box	Pc./Carton	
50	PRCB 191	19	20	600	17.75
51	PRCB 201	20	20	600	18.25
52	PRCB 251	25	15	450	23.00
53	PRCB 321	32	10	160	42.75
54	PRCB 401	40	10	160	51.50
55	PRCB 501	50	5	80	93.00

### INTERSECTION - 4 WAY CIRCULAR BOX



SR. NO.	PRODUCT CODE	SIZE OD (mm)	STANDARD PACK		RATE Pc
			Pc./Box	Pc./Carton	
74	PRCB 194	19	20	400	22.25
75	PRCB 204	20	20	400	22.75
76	PRCB 254	25	15	240	31.50
77	PRCB 324	32	10	160	48.75
78	PRCB 404	40	10	160	66.75
79	PRCB 504	50	5	80	118.00

### ANGLE - 2 WAY CIRCULAR BOX



SR. NO.	PRODUCT CODE	SIZE OD (mm)	STANDARD PACK		RATE Pc
			Pc./Box	Pc./Carton	
56	PRCB 192A	19	20	400	18.25
57	PRCB 202A	20	20	400	18.75
58	PRCB 252A	25	15	300	23.25
59	PRCB 322A	32	10	160	45.00
60	PRCB 402A	40	10	160	56.00
61	PRCB 502A	50	5	80	100.75

### TERMINAL - 1 WAY DEEP CIRCULAR BOX



SR. NO.	PRODUCT CODE	SIZE OD (mm)	STANDARD PACK		RATE Pc
			Pc./Box	Pc./Carton	
80	PRCB 191D	19	10	280	29.50
81	PRCB 201D	20	10	280	30.75
82	PRCB 251D	25	10	280	37.00
83	PRCB 321D	32	10	280	43.00

### THROUGH - 2 WAY CIRCULAR BOX



SR. NO.	PRODUCT CODE	SIZE OD (mm)	STANDARD PACK		RATE Pc
			Pc./Box	Pc./Carton	
62	PRCB 192S	19	20	400	18.25
63	PRCB 202S	20	20	400	18.75
64	PRCB 252S	25	15	300	23.25
65	PRCB 322S	32	10	160	45.00
66	PRCB 402S	40	10	160	56.00
67	PRCB 502S	50	5	80	100.75

### ANGLE - 2 WAY DEEP CIRCULAR BOX



SR. NO.	PRODUCT CODE	SIZE OD (mm)	STANDARD PACK		RATE Pc
			Pc./Box	Pc./Carton	
84	PRCB 192AD	19	10	280	31.25
85	PRCB 202AD	20	10	280	31.75
86	PRCB 252AD	25	10	280	38.25
87	PRCB 322AD	32	10	220	46.50

### TEE - 3 WAY CIRCULAR BOX



SR. NO.	PRODUCT CODE	SIZE OD (mm)	STANDARD PACK		RATE Pc
			Pc./Box	Pc./Carton	
68	PRCB 193	19	20	400	20.50
69	PRCB 203	20	20	400	21.50
70	PRCB 253	25	15	300	27.75
71	PRCB 323	32	10	160	46.25
72	PRCB 403	40	10	160	58.75
73	PRCB 503	50	5	80	108.25

### THROUGH - 2 WAY DEEP CIRCULAR BOX



SR. NO.	PRODUCT CODE	SIZE OD (mm)	STANDARD PACK		RATE Pc
			Pc./Box	Pc./Carton	
88	PRCB 192SD	19	10	200	31.25
89	PRCB 202SD	20	10	200	31.75
90	PRCB 252SD	25	10	200	38.25
91	PRCB 322SD	32	10	200	46.50



# ROUND CONDUIT UPVC PIPE FITTINGS

HSN : 39174000



## CIRCULAR BOX WITHOUT LID

### TEE - 3 WAY

#### DEEP CIRCULAR BOX



SR. NO.	PRODUCT CODE	SIZE OD (mm)	STANDARD PACK		RATE Pc
			Pc./Box	Pc./Carton	
92	PRCB 193D	19	10	220	35.25
93	PRCB 203D	20	10	220	36.00
94	PRCB 253D	25	10	220	45.00
95	PRCB 323D	32	10	160	50.00

### BACK OUTLET THROUGH - 2 WAY

#### CIRCULAR BOX



SR. NO.	PRODUCT CODE	SIZE OD (mm)	STANDARD PACK		RATE Pc
			Pc./Box	Pc./Carton	
111	PRCB 202S BO	20	20	400	32.00
112	PRCB 252S BO	25	15	300	47.25

### INTERSECTION - 4 WAY

#### DEEP CIRCULAR BOX



SR. NO.	PRODUCT CODE	SIZE OD (mm)	STANDARD PACK		RATE Pc
			Pc./Box	Pc./Carton	
96	PRCB 194D	19	10	220	35.75
97	PRCB 204D	20	10	220	37.00
98	PRCB 254D	25	10	220	47.50
99	PRCB 324D	32	10	160	51.50

### BACK OUTLET ANGLE - 2 WAY

#### CIRCULAR BOX



SR. NO.	PRODUCT CODE	SIZE OD (mm)	STANDARD PACK		RATE Pc
			Pc./Box	Pc./Carton	
113	PRCB 202A BO	20	20	400	32.00
114	PRCB 252A BO	25	15	300	47.25

### BRANCH - 2 WAY (U)

#### CIRCULAR BOX



SR. NO.	PRODUCT CODE	SIZE OD (mm)	STANDARD PACK		RATE Pc
			Pc./Box	Pc./Carton	
100	PRCB 19U	19	20	400	31.75
101	PRCB 20U	20	20	400	32.25
102	PRCB 25U	25	20	400	43.50

### BACK OUTLET TEE - 3 WAY

#### CIRCULAR BOX



SR. NO.	PRODUCT CODE	SIZE OD (mm)	STANDARD PACK		RATE Pc
			Pc./Box	Pc./Carton	
115	PRCB 203 BO	20	20	400	36.00
116	PRCB 253 BO	25	15	300	51.00

### BRANCH - 3 WAY (Y)

#### CIRCULAR BOX



SR. NO.	PRODUCT CODE	SIZE OD (mm)	STANDARD PACK		RATE Pc
			Pc./Box	Pc./Carton	
103	PRCB 19Y	19	20	400	34.25
104	PRCB 20Y	20	20	400	36.00
105	PRCB 25Y	25	15	300	47.25

### WITH SCREW

#### CIRCULAR LID



SR. NO.	PRODUCT CODE	SIZE OD (mm)	STANDARD PACK		RATE Pc
			Pc./Box	Pc./Carton	
117	PRCL65	65	100	2000	5.75
118	PRCL80	80	100	2000	11.00
119	PRCL85	85	100	2000	11.00
120	PRCL90	90	100	1800	12.50
121	PRCL93	93	25	750	12.50
122	PRCL110	110	50	900	19.50

### BRANCH - 4 WAY (H)

#### CIRCULAR BOX



SR. NO.	PRODUCT CODE	SIZE OD (mm)	STANDARD PACK		RATE Pc
			Pc./Box	Pc./Carton	
106	PRCB 19H	19	15	300	36.25
107	PRCB 20H	20	15	300	37.25
108	PRCB 25H	25	15	300	50.50

### WITHOUT SCREW

#### CIRCULAR LID



SR. NO.	PRODUCT CODE	SIZE OD (mm)	STANDARD PACK		RATE Pc
			Pc./Box	Pc./Carton	
123	PRCL65WS	65	100	2000	4.50
124	PRCL80WS	80	100	2000	10.50
125	PRCL85WS	85	100	2000	10.50
126	PRCL90WS	90	100	1800	12.00
127	PRCL93WS	93	25	750	12.00
128	PRCL110WS	110	50	900	19.00

» 65 - For 19/20/25mm JB, DJB &amp; 32 DJB

» 80 - For 32/40mm JB

» 93 - For 50mm JB



## CIRCULAR BOX WITH LID & SCREW

### TERMINAL - 1 WAY CIRCULAR BOX



SR. NO.	PRODUCT CODE	SIZE	STANDARD PACK		RATE Pc
		OD (mm)	Pc./Box	Pc./Carton	
129	PRCB 191L	19	20	600	24.50
130	PRCB 201L	20	20	600	25.00
131	PRCB 251L	25	15	450	29.75
132	PRCB 321L	32	10	160	54.75
133	PRCB 401L	40	10	160	63.50
134	PRCB 501L	50	5	80	106.50

### TERMINAL - 1 WAY (AUTO LID W/O SCREW) CIRCULAR BOX



SR. NO.	PRODUCT CODE	SIZE	STANDARD PACK		RATE Pc
		OD (mm)	Pc./Box	Pc./Carton	
135	PRCB 201AL	20	20	360	22.25
136	PRCB 251AL	25	15	270	28.00

### ANGLE - 2 WAY CIRCULAR BOX



SR. NO.	PRODUCT CODE	SIZE	STANDARD PACK		RATE Pc
		OD (mm)	Pc./Box	Pc./Carton	
137	PRCB 192AL	19	20	400	25.00
138	PRCB 202AL	20	20	400	25.50
139	PRCB 252AL	25	15	300	30.00
140	PRCB 322AL	32	10	160	57.00
141	PRCB 402AL	40	10	160	68.00
142	PRCB 502AL	50	5	80	114.25

### ANGLE - 2 WAY (AUTO LID W/O SCREW) CIRCULAR BOX



SR. NO.	PRODUCT CODE	SIZE	STANDARD PACK		RATE Pc
		OD (mm)	Pc./Box	Pc./Carton	
143	PRCB 202AAL	20	15	270	25.25
144	PRCB 252AAL	25	10	180	29.25

### THROUGH - 2 WAY CIRCULAR BOX



SR. NO.	PRODUCT CODE	SIZE	STANDARD PACK		RATE Pc
		OD (mm)	Pc./Box	Pc./Carton	
145	PRCB 192SL	19	20	400	25.00
146	PRCB 202SL	20	20	400	25.50
147	PRCB 252SL	25	15	300	30.00
148	PRCB 322SL	32	10	160	57.00
149	PRCB 402SL	40	10	160	68.00
150	PRCB 502SL	50	5	80	114.25

### THROUGH - 2 WAY (AUTO LID W/O SCREW) CIRCULAR BOX



SR. NO.	PRODUCT CODE	SIZE	STANDARD PACK		RATE Pc
		OD (mm)	Pc./Box	Pc./Carton	
151	PRCB 202SAL	20	15	270	25.25
152	PRCB 252SAL	25	10	180	29.25

### TEE - 3 WAY CIRCULAR BOX



SR. NO.	PRODUCT CODE	SIZE	STANDARD PACK		RATE Pc
		OD (mm)	Pc./Box	Pc./Carton	
153	PRCB 193L	19	20	400	27.25
154	PRCB 203L	20	20	400	28.25
155	PRCB 253L	25	15	300	34.50
156	PRCB 323L	32	5	110	58.25
157	PRCB 403L	40	5	110	70.75
158	PRCB 503L	50	5	80	121.75

### TEE - 3 WAY (AUTO LID W/O SCREW) CIRCULAR BOX



SR. NO.	PRODUCT CODE	SIZE	STANDARD PACK		RATE Pc
		OD (mm)	Pc./Box	Pc./Carton	
159	PRCB 203AL	20	15	270	26.50
160	PRCB 253AL	25	10	180	32.00

### INTERSECTION - 4 WAY CIRCULAR BOX



SR. NO.	PRODUCT CODE	SIZE	STANDARD PACK		RATE Pc
		OD (mm)	Pc./Box	Pc./Carton	
161	PRCB 194L	19	20	320	29.00
162	PRCB 204L	20	20	320	29.50
163	PRCB 254L	25	15	240	38.25
164	PRCB 324L	32	5	110	60.75
165	PRCB 404L	40	5	110	78.75
166	PRCB 504L	50	5	80	131.50

### INTERSECTION - 4 WAY (AUTO LID W/O SCREW) CIRCULAR BOX



SR. NO.	PRODUCT CODE	SIZE	STANDARD PACK		RATE Pc
		OD (mm)	Pc./Box	Pc./Carton	
167	PRCB 204AL	20	12	216	29.00
168	PRCB 254AL	25	15	150	37.00



# ROUND CONDUIT UPVC PIPE FITTINGS

HSN : 39174000



## PP CIRCULAR BOX WITH LID & SCREW



### INTERSECTION - 4 WAY

(POLYPROPYLENE)

### CIRCULAR BOX



SR. NO.	PRODUCT CODE	SIZE	STANDARD PACK		RATE Pc
		OD (mm)	Pc./Box	Pc./Carton	
169	PPCB194L	19	20	320	23.75
170	PPCB254L	25	15	240	28.50

## PP DEEP CIRCULAR BOX WITH LID & SCREW



### INTERSECTION - 4 WAY

(POLYPROPYLENE)

### DEEP CIRCULAR BOX



SR. NO.	PRODUCT CODE	SIZE	STANDARD PACK		RATE Pc
		OD (mm)	Pc./Box	Pc./Carton	
171	PPCB194DL	19	10	220	34.50
172	PPCB254DL	25	10	220	40.50

## DEEP CIRCULAR BOX WITH LID & SCREW

### TERMINAL - 1 WAY

### DEEP CIRCULAR BOX



SR. NO.	PRODUCT CODE	SIZE	STANDARD PACK		RATE Pc
		OD (mm)	Pc./Box	Pc./Carton	
173	PRCB 191DL	19	10	280	36.25
174	PRCB 201DL	20	10	280	37.50
175	PRCB 251DL	25	10	280	43.75
176	PRCB 321DL	32	10	280	58.75

### ANGLE - 2 WAY

### DEEP CIRCULAR BOX



SR. NO.	PRODUCT CODE	SIZE	STANDARD PACK		RATE Pc
		OD (mm)	Pc./Box	Pc./Carton	
177	PRCB 192ADL	19	10	280	38.00
178	PRCB 202ADL	20	10	280	38.50
179	PRCB 252ADL	25	10	280	45.00
180	PRCB 322ADL	32	10	280	61.00

### THROUGH - 2 WAY

### DEEP CIRCULAR BOX



SR. NO.	PRODUCT CODE	SIZE	STANDARD PACK		RATE Pc
		OD (mm)	Pc./Box	Pc./Carton	
181	PRCB 192SDL	19	10	200	38.00
182	PRCB 202SDL	20	10	200	38.50
183	PRCB 252SDL	25	10	200	45.00
184	PRCB 322SDL	32	10	200	61.00

### TEE - 3 WAY

### DEEP CIRCULAR BOX



SR. NO.	PRODUCT CODE	SIZE	STANDARD PACK		RATE Pc
		OD (mm)	Pc./Box	Pc./Carton	
185	PRCB 193DL	19	10	220	42.00
186	PRCB 203DL	20	10	220	42.75
187	PRCB 253DL	25	10	220	51.75
188	PRCB 323DL	32	10	160	62.25

### INTERSECTION - 4 WAY

### DEEP CIRCULAR BOX



SR. NO.	PRODUCT CODE	SIZE	STANDARD PACK		RATE Pc
		OD (mm)	Pc./Box	Pc./Carton	
189	PRCB 194DL	19	10	220	42.50
190	PRCB 204DL	20	10	220	43.75
191	PRCB 254DL	25	10	220	54.25
192	PRCB 324DL	32	10	160	64.75

### BRANCH - 2 WAY (U)

### CIRCULAR BOX



SR. NO.	PRODUCT CODE	SIZE	STANDARD PACK		RATE Pc
		OD (mm)	Pc./Box	Pc./Carton	
193	PRCB 19UL	19	20	400	38.50
194	PRCB 20UL	20	20	400	39.00
195	PRCB 25UL	25	20	400	50.25

### BRANCH - 3 WAY (Y)

### CIRCULAR BOX



SR. NO.	PRODUCT CODE	SIZE	STANDARD PACK		RATE Pc
		OD (mm)	Pc./Box	Pc./Carton	
196	PRCB 19YL	19	15	300	41.00
197	PRCB 20YL	20	15	300	42.75
198	PRCB 25YL	25	15	300	54.00

### BRANCH - 4 WAY (H)

### CIRCULAR BOX



SR. NO.	PRODUCT CODE	SIZE	STANDARD PACK		RATE Pc
		OD (mm)	Pc./Box	Pc./Carton	
199	PRCB 19HL	19	15	300	43.00
200	PRCB 20HL	20	15	300	44.00
201	PRCB 25HL	25	15	300	57.25



# ROUND CONDUIT uPVC PIPE FITTINGS

HSN : 39174000



## BACK OUTLET - 1 WAY CIRCULAR BOX



SR. NO.	PRODUCT CODE	SIZE OD (mm)	STANDARD PACK		RATE Pc
			Pc./Box	Pc./Carton	
202	PRCB 201 BOL	20	20	400	38.25
203	PRCB 251 BOL	25	15	300	51.75

## LOOP IN BOX EXTENSION



SR. NO.	PRODUCT CODE	SIZE OD (mm)	STANDARD PACK		RATE Pc
			Pc./Box	Pc./Carton	
215	PRLB 20E	20	24	384	28.00

## BACK OUTLET THROUGH - 2 WAY CIRCULAR BOX



SR. NO.	PRODUCT CODE	SIZE OD (mm)	STANDARD PACK		RATE Pc
			Pc./Box	Pc./Carton	
204	PRCB 202S BOL	20	15	300	38.75
205	PRCB 252S BOL	25	15	240	54.00

## COUPLER



SR. NO.	PRODUCT CODE	SIZE OD (mm)	STANDARD PACK		RATE Pc
			Pc./Box	Pc./Carton	
216	PCR 19	19	100	2000	5.00
217	PCR 20	20	100	2000	5.75
218	PCR 20 L	20 Long	150	2400	6.00
219	PCR 25	25	100	2000	7.50
220	PCR 32	32	60	960	13.25
221	PCR 40	40	30	480	22.50
222	PCR 50	50	20	320	38.50

## BACK OUTLET ANGLE - 2 WAY CIRCULAR BOX



SR. NO.	PRODUCT CODE	SIZE OD (mm)	STANDARD PACK		RATE Pc
			Pc./Box	Pc./Carton	
206	PRCB 202A BOL	20	15	300	38.75
207	PRCB 252A BOL	25	15	240	54.00

## (PIPE TO FITTING) REDUCER COUPLER



SR. NO.	PRODUCT CODE	SIZE OD (mm)	STANDARD PACK		RATE Pc
			Pc./Box	Pc./Carton	
223	PRR1	25>20	250	4000	7.50

## BACK OUTLET TEE - 3 WAY CIRCULAR BOX



SR. NO.	PRODUCT CODE	SIZE OD (mm)	STANDARD PACK		RATE Pc
			Pc./Box	Pc./Carton	
208	PRCB 203 BOL	20	15	300	42.75
209	PRCB 253 BOL	25	15	240	57.75

## (PIPE TO PIPE) REDUCER COUPLER



SR. NO.	PRODUCT CODE	SIZE OD (mm)	STANDARD PACK		RATE Pc
			Pc./Box	Pc./Carton	
224	PRR 2520	25 > 20	70	1400	7.50
225	PRR 3220	32 > 20	60	1200	9.75
226	PRR 3225	32 > 25	40	800	13.25
227	PRR 4020	40 > 20	48	960	16.75
228	PRR 4032	40 > 32	32	640	18.50
229	PRR 5032	50 > 32	30	480	22.25
230	PRR 5040	50 > 40	30	480	22.50

## CIRCULAR EXTENSION RING



SR. NO.	PRODUCT CODE	SIZE OD (mm)	STANDARD PACK		RATE Pc
			Pc./Box	Pc./Carton	
210	PRER 20	20	50	800	13.00
211	PRER 25	25	40	640	16.75

## LOOP IN BOX



SR. NO.	PRODUCT CODE	SIZE OD (mm)	STANDARD PACK		RATE Pc
			Pc./Box	Pc./Carton	
212	PRLB 19	19 (4 punch)	20	400	18.50
213	PRLB 20	20 (4 punch)	20	400	18.50
214	PRLB 25	25 (2 punch)	20	400	18.50





# ROUND CONDUIT UPVC PIPE FITTINGS

HSN : 39174000



## SLIP TYPE BEND



SR. NO.	PRODUCT CODE	SIZE	STANDARD PACK		RATE Pc
		OD (mm)	Pc./Box	Pc./Carton	
231	PRBN 19	19	65	1040	8.25
232	PRBN 20	20	65	1040	8.75
233	PRBN 25	25	35	560	14.00
234	PRBN 32	32	20	320	37.50
235	PRBN 40	40	10	160	76.00
236	PRBN 50	50	5	80	103.00

## ROUND 'U' CLIP



SR. NO.	PRODUCT CODE	SIZE	STANDARD PACK		RATE Pc
		OD (mm)	Pc./Box	Pc./Carton	
257	PRUC 20	20	200	4000	7.75
258	PRUC 25	25	100	3000	12.25

## SLIP TYPE LONG BEND



SR. NO.	PRODUCT CODE	SIZE	STANDARD PACK		RATE Pc
		OD (mm)	Pc./Box	Pc./Carton	
237	PRBL 20	20	45	720	13.25
238	PRBL 25	25	20	320	21.75
239	PRBL 32	32	10	160	52.00
240	PRBL 40	40	-	80	102.00
241	PRBL 50	50	-	55	153.00

## END CAP



SR. NO.	PRODUCT CODE	SIZE	STANDARD PACK		RATE Pc
		OD (mm)	Pc./Box	Pc./Carton	
259	PREC 20	20	150	3000	3.00
260	PREC 25	25	100	2000	5.00
261	PREC 32	32	70	1400	6.00
262	PREC 40	40	32	640	11.50
263	PREC 50	50	24	480	16.50

## SPACE BAR SADDLE



SR. NO.	PRODUCT CODE	SIZE	STANDARD PACK		RATE Pc
		OD (mm)	Pc./Box	Pc./Carton	
242	PRBS 19	19	100	2000	7.00
243	PRBS 20	20	100	2000	7.50
244	PRBS 25	25	100	2000	9.25
245	PRBS 32	32	100	1600	15.75
246	PRBS 40	40	80	1280	17.50
247	PRBS 50	50	60	960	21.00
248	PRBS 63	63	-	50	27.25

## MALE BUSH ADAPTOR



SR. NO.	PRODUCT CODE	SIZE	STANDARD PACK		RATE Pc
		OD (mm)	Pc./Box	Pc./Carton	
264	PMBA 19	19	100	2000	7.50
265	PMBA 20	20	100	2000	8.25
266	PMBA 25	25	100	2000	9.75

## FEMALE BUSH ADAPTOR



SR. NO.	PRODUCT CODE	SIZE	STANDARD PACK		RATE Pc
		OD (mm)	Pc./Box	Pc./Carton	
267	PFBA 19	19	100	2000	7.50
268	PFBA 20	20	100	2000	8.25
269	PFBA 25	25	100	2000	10.25
270	PFBA 32	32	75	1200	15.75
271	PFBA 40	40	50	800	21.25
272	PFBA 50	50	25	400	35.75

## SADDLE STRAP



SR. NO.	PRODUCT CODE	SIZE	STANDARD PACK		RATE Pc
		OD (mm)	Pc./Box	Pc./Carton	
249	PRSS 19	19	100	2000	4.25
250	PRSS 20	20	100	2000	4.50
251	PRSS 25	25	100	2000	6.00
252	PRSS 32	32	100	1600	7.00
253	PRSS 40	40	80	1280	9.25
254	PRSS 50	50	60	960	12.25

(POLYPROPYLENE)

## SELF LOCKING SADDLE CLIP



SR. NO.	PRODUCT CODE	SIZE	STANDARD PACK		RATE Pc
		OD (mm)	Pc./Box	Pc./Carton	
255	PPSC20SL	20	75	450	6.00
256	PPSC25SL	25	50	300	7.00

## ROUND ELBOW



SR. NO.	PRODUCT CODE	SIZE	STANDARD PACK		RATE Pc
		OD (mm)	Pc./Box	Pc./Carton	
273	PRE 20	20	125	2500	7.50
274	PRE 25	25	75	1200	10.25
275	PRE 32	32	20	400	14.25
276	PRE 40	40	15	300	22.00
277	PRE 50	50	10	200	35.50



# ROUND CONDUIT UPVC PIPE FITTINGS

HSN : 39174000



## ROUND TEE



SR. NO.	PRODUCT CODE	SIZE OD (mm)	STANDARD PACK		RATE Pc
			Pc./Box	Pc./Carton	
278	PRT 20	20	50	1500	12.50
279	PRT 25	25	50	800	15.50
280	PRT 32	32	15	300	17.50
281	PRT 40	40	10	200	26.25
282	PRT 50	50	10	160	41.50

## INSPECTION ELBOW



SR. NO.	PRODUCT CODE	SIZE OD (mm)	STANDARD PACK		RATE Pc
			Pc./Box	Pc./Carton	
283	PIE 20	20	20	600	32.25
284	PIE 25	25	20	400	40.25

## INSPECTION TEE



SR. NO.	PRODUCT CODE	SIZE OD (mm)	STANDARD PACK		RATE Pc
			Pc./Box	Pc./Carton	
285	PIT 20	20	20	600	31.75
286	PIT 25	25	20	400	47.25

## INSPECTION BEND



SR. NO.	PRODUCT CODE	SIZE OD (mm)	STANDARD PACK		RATE Pc
			Pc./Box	Pc./Carton	
287	PIB 20	20	20	600	32.00
288	PIB 25	25	20	400	47.00

## ADAPTABLE BOX WITH LID



SR. NO.	PRODUCT CODE	SIZE OD (mm)	STANDARD PACK		RATE Pc
			Pc./Box	Pc./Carton	
289	PAB 75L	3" x 3" x 2" 75x75x50	10	200	69.00
290	PAB 110L	4" x 4" x 3" 110x110x75	-	100	135.00
291	PAB 160L	6" x 4" x 3" 160x110x75	-	75	273.00
292	PAB 160SL	6" x 6" x 3" 160x160x75	-	50	299.00
293	PAB 225SL	9" x 9" x 3" 225x225x75	-	20	647.00
294	PAB 300SL	12" x 12" x 4" 300x300x110	-	5	1367.00

(WHITE)

## SURFACE SWITCH BOX



SR. NO.	PRODUCT CODE	SIZE OD (mm)	STANDARD PACK		RATE Pc
			Pc./Box	Pc./Carton	
295	PSB1	3" x 3"	10	300	43.25
296	PSB2	6" x 3"	10	200	74.00

(WHITE)

## SWITCH BOX LID



SR. NO.	PRODUCT CODE	SIZE OD (mm)	STANDARD PACK		RATE Pc
			Pc./Box	Pc./Carton	
297	PSBL1 LID	3" x 3"	40	1200	18.75
298	PSBL2 LID	6" x 3"	25	750	25.50

(SWITCH BOX)

## FLUSH MOUNTED



SR. NO.	PRODUCT CODE	SIZE OD (mm)	STANDARD PACK		RATE Pc
			Pc./Box	Pc./Carton	
299	PFSB1	3" x 3" x 2"	10	200	48.75
300	PFSB2	6" x 3" x 2"	10	160	65.50

(BLACK)

## FAN BOX



SR. NO.	PRODUCT CODE	SIZE OD (mm)	STANDARD PACK		RATE Pc
			Pc./Box	Pc./Carton	
301	PRFB20	20 Standard	10	220	51.50
302	PRFB25	25 Standard	10	220	51.50
303	PRFB20SL	20 Large	10	140	70.00
304	PRFB25SL	25 Large	10	140	70.00
305	PRFBRD2025	20/25 with Rod	1	28	206.50
306	PRFBRD25	25 with Rod	1	28	206.50

## METAL FAN BOX WITH ROD (BROWN)



HSN : 73072900

SR. NO.	PRODUCT CODE	SIZE OD (mm)	STANDARD PACK		RATE Pc
			Pc./Box	Pc./Carton	
307	PMFB 2025	20/25	2	40	173.75

## UPVC SOLVENT CEMENT



HSN: 35061000

SR. NO.	PRODUCT CODE	SIZE (ml)	Colour	STANDARD PACK		RATE Pc
				Pc./Box	Pc./Carton	
308	PSC100 ML	100ml	Transparent	24	144	82.00
309	PSC250 ML	250ml	Transparent	24	96	147.50
310	PSC500 ML	500ml	Transparent	12	48	250.00
311	PSC1L	1L	Transparent	6	24	430.50
312	PSC5L	5L	Transparent	-	6	1786.00

## PVC ELECTRICAL INSULATION TAPE



HSN : 85469090

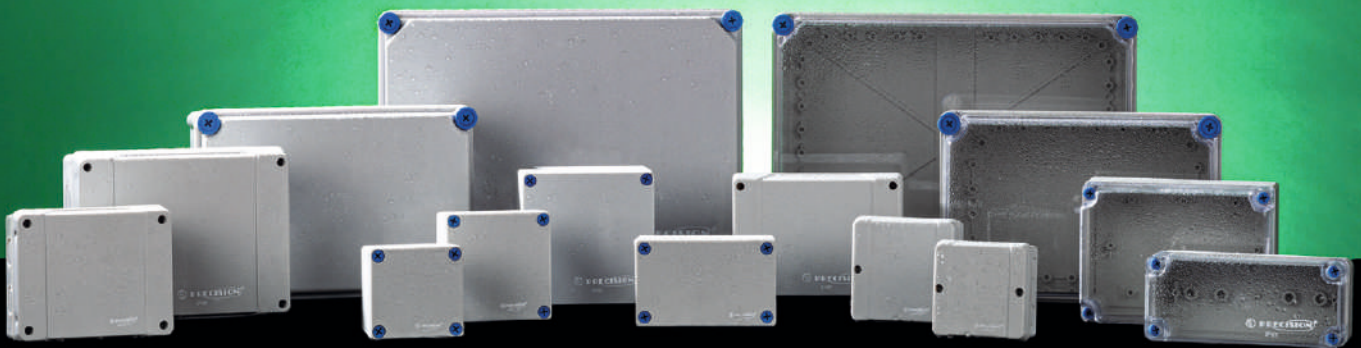
SR. NO.	PRODUCT CODE	SIZE W(mm)xL(Mtr)	Colour	STANDARD PACK		RATE Pc
				Pc./Box	Pc./Carton	
313	PPIT 18	18x6	BLACK	30	540	13.50

✳ 20mm Knockout Available    △ 32/38/40mm Knockout Available  
 ✳ 20/25 Knockout Available    ◇ 50mm Knockout Available



## ALL WEATHER BOXES

**Precision All Weather Boxes** are manufactured from high quality impact resistant Engineering Thermoplastics (Polycarbonate / ABS). The material itself is self-extinguishing and our specially developed formulation gives it special ability to withstand high temperatures. The product passes stringent IP 67 standard requirements which makes it suitable to use indoor and outdoor in harsh environment. Our specially made design gives it highest level of safety from unwanted ingress of oil / water / any other solid waste.



### APPLICATIONS

Enclosure boxes for electrical installations.  
Suitable for Outdoor / Indoor environment.

### FEATURES

- IP 67 compliance, suitable for Outdoor Installations (CIPET tested)
- Specially formulated Engineering Thermoplastic (Polycarbonate / ABS) gives temperature protection ranging from  $-40^{\circ}\text{C}$  to  $+90^{\circ}\text{C}$
- Weatherproof, Dust proof and Impact resistant
- Transparent lids ensure enhanced visibility
- Innovative design makes compatible for various types of Switchgears / Electrical components
- Body part with adequate molded markings for easy cable entry location from all sides
- Various sizes available as per individual choice
- Screws supplied are made up of anti-rust SS / Engineering Plastic for corrosion free working and durability as well.



# ALL WEATHER BOXES

IP 67 HSN : 85381010

GREY

## ALL WEATHER BOXES OPAQUE LID (ABS)



Sr No.	Product Code	Size (mm)	Standard Pack (Pc/Carton)	Rate (Pc)
314	PAB 8383OL	83 X 83 X 65	21	212.50
⊗ 315	PAB 8888OL	88 X 88 X 53	27	222.25
⊗ 316	PAB 9898OL	98 X 98 X 61	24	246.00
317	PAB 100100OL	100 X 100 X 65	21	247.00
318	PAB 13080OL	130 X 80 X 65	16	284.25
319	PAB 130130OL	130 X 130 X 80	16	421.00
⊗ 320	PAB 139119OL	139 X 119 X 70	10	238.75
⊗ 321	PAB 167125OL	167 X 125 X 82	12	296.25
322	PAB 18080OL	180 X 80 X 90	12	344.00
323	PAB 1801OL	180 X 130 X 75	16	467.50
324	PAB 1802OL	180 X 130 X 100	12	472.50
325	PAB 180180OL	180 X 180 X 100	20	607.75
⊗ 326	PAB 200160OL	200 X 160 X 98	8	466.25
327	PAB 210190OL	210 X 190 X 100	6	635.00
328	PAB 27080OL	270 X 80 X 90	12	422.00
329	PAB 280190OL	280 X 190 X 130	4	865.50
330	PAB 280280OL	280 X 280 X 130	2	1220.75
331	PAB 380190OL	380 X 190 X 130	3	1119.50
332	PAB 380280OL	380 X 280 X 130	2	1589.75
333	PAB 560380OL	560 X 380 X 180	2	3703.50

⊗ With Knockout

## ALL WEATHER BOXES TRANSPARENT LID (ABS)



Sr No.	Product Code	Size (mm)	Standard Pack (Pc/Carton)	Rate (Pc)
334	PAB 18080TL	180 X 80 X 90	12	397.50
335	PAB 27080TL	270 X 80 X 90	12	495.25
336	PAB 180130TL	180 X 130 X 100	12	481.75
337	PAB 180180TL	180 X 180 X 100	20	625.00
338	PAB 210190TL	210 X 190 X 100	6	726.75
339	PAB 280190TL	280 X 190 X 130	4	941.75
340	PAB 280280TL	280 X 280 X 130	2	1278.75
341	PAB 380190TL	380 X 190 X 130	3	1278.75
342	PAB 380280TL	380 X 280 X 130	2	1853.25
343	PAB 560380TL	560 X 380 X 180	2	4222.25

## PG GLANDS (PP)

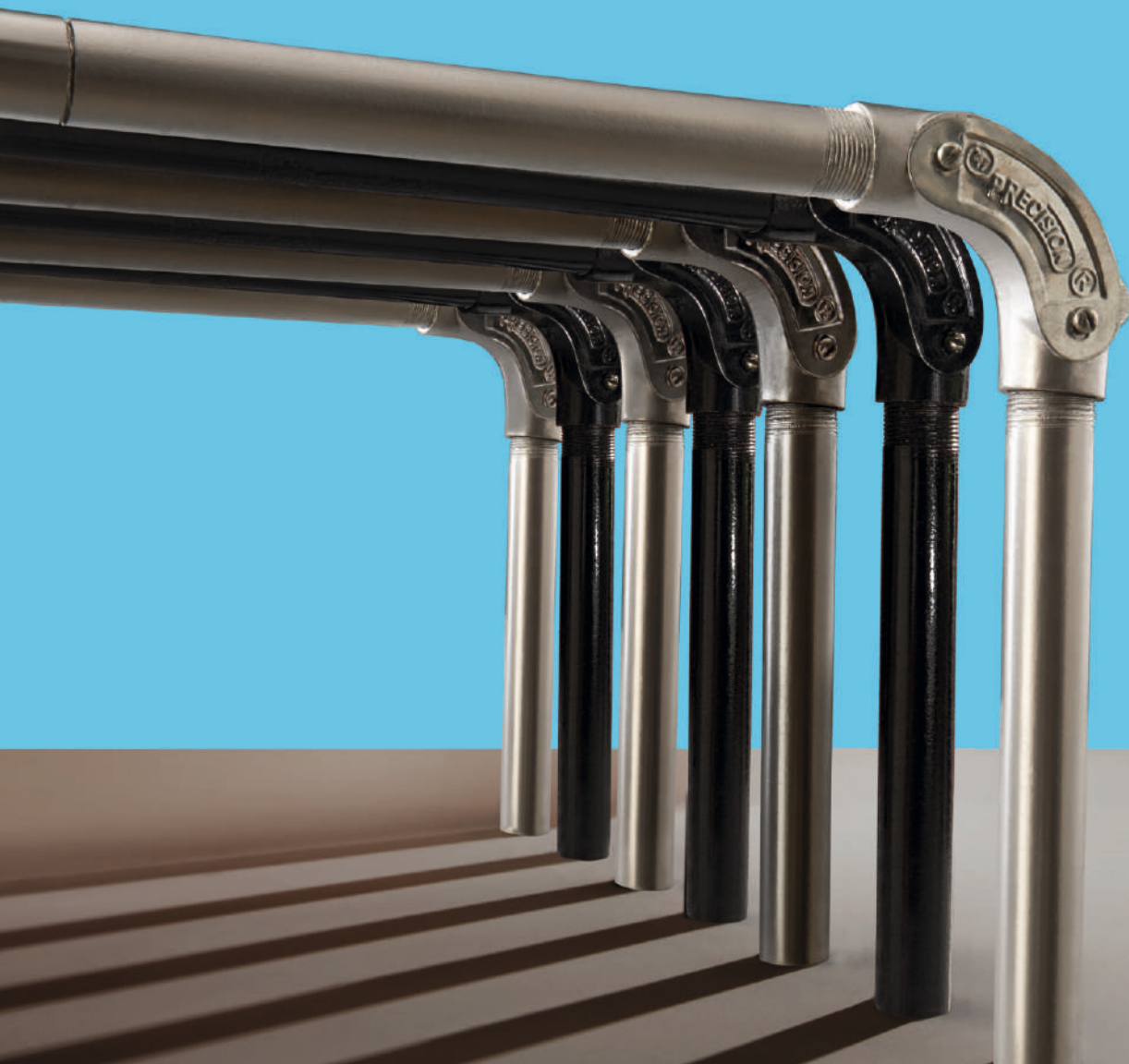


Sr No.	Product Code	Size (mm)	Standard Pack (Pc/Carton)	Rate (Pc)
344	PPPG 7GL	7	600	5.00
345	PPPG 9GL	9	320	6.50
346	PPPG 11GL	11	240	7.00
347	PPPG 13.5GL	13.5	300	6.50
348	PPPG 16GL	16	240	7.50
349	PPPG 19GL	19	180	10.00
350	PPPG 21GL	21	120	11.50
351	PPPG 25GL	25	120	14.50



## G.I & M.S. CONDUIT PIPES & FITTINGS

**Precision G.I & M.S. Conduit Pipes** are manufactured from rigorously tested raw material, in accordance with IS 9537 Part – 2. G.I. Conduit Pipes are coated at a hot dipped galvanising plant in which iron or steel is coated with a layer of zinc. This coating makes the conduit safe and durable for industrial installations, coastal line atmosphere & thermal power stations. M.S. Conduit Pipes are treated and coated with paint.



## Applications

Channelising electrical surface wiring and cable ducting.

## Features



Anti - Rust Coat



Good Finish



Easy to cut



High resistance to Corrosion



### DIMENSIONS OF G.I. & M.S. CONDUIT PIPES

NORMAL SIZE	OUTSIDE DIAMETER	TOLERANCE OD	WALL THICKNESS	WALL THICKNESS TOLERANCE
MM	MM	MM	MM	MM
20	20	0 -0.3	1.60	±0.2
25	25	0 -0.4	1.60	±0.2
32	32	0 -0.4	1.60	±0.2
40	40	0 -0.4	2.00	+0.2 -0.4
50	50	0 -0.5	2.00	+0.2 -0.4



## G.I. & M.S. CONDUIT PIPES

HSN : 73069090



COLOUR : SILVER

### G.I. CONDUIT PIPES



SR. NO.	PRODUCT CODE	SIZE	STANDARD PACK		RATE (Mtr)
		OD (mm)	Pc./Mtr	Mtr./Bdl.	
352	PGIC 20	20	26 x 3m	78	231.00
353	PGIC 25	25	21 x 3m	63	280.00
354	PGIC 32	32	16 x 3m	48	420.00
355	PGIC 40	40	10 x 3m	30	665.00
356	PGIC 50	50	5 x 3m	15	755.00

COLOUR : BLACK

### M.S. CONDUIT PIPES



SR. NO.	PRODUCT CODE	SIZE	STANDARD PACK		RATE (Mtr)
		OD (mm)	Pc./Mtr	Mtr./Bdl.	
357	PMSC 20	20	26 x 3m	78	145.00
358	PMSC 25	25	21 x 3m	63	185.00
359	PMSC 32	32	16 x 3m	48	260.00
360	PMSC 40	40	10 x 3m	30	435.00
361	PMSC 50	50	5 x 3m	15	570.00

## G.I. & M.S. CONDUIT PIPE FITTINGS

HSN : 73269099



### CIRCULAR BOX WITH LID AND SCREW

TERMINAL -1 WAY (SCREW TYPE)

### G.I. CIRCULAR BOX



SR. NO.	PRODUCT CODE	SIZE	STANDARD PACK		RATE Pc
		OD (mm)	Pc./Box	Pc./Carton	
362	PGIB 251	25	20	200	80.00

TERMINAL -1 WAY (SCREW TYPE)

### M.S. CIRCULAR BOX



SR. NO.	PRODUCT CODE	SIZE	STANDARD PACK		RATE Pc
		OD (mm)	Pc./Box	Pc./Carton	
363	PMSB 201	20	20	200	54.00
364	PMSB 251	25	20	200	60.00

# G.I. & M.S. CONDUIT PIPE FITTINGS

HSN : 73269099



## THROUGH - 2 WAY (SCREW TYPE) G.I. CIRCULAR BOX



SR. NO.	PRODUCT CODE	SIZE	STANDARD PACK		RATE
		OD (mm)	Pc./Box	Pc./Carton	Pc
365	PGIB 252S	25	20	200	83.50

## THROUGH - 2 WAY (SCREW TYPE) M.S. CIRCULAR BOX



SR. NO.	PRODUCT CODE	SIZE	STANDARD PACK		RATE
		OD (mm)	Pc./Box	Pc./Carton	Pc
366	PMSB 202S	20	20	200	65.50
367	PMSB 252S	25	20	200	68.00

## TEE - 3 WAY (SCREW TYPE) G.I. CIRCULAR BOX



SR. NO.	PRODUCT CODE	SIZE	STANDARD PACK		RATE
		OD (mm)	Pc./Box	Pc./Carton	Pc
368	PGIB 253	20	20	200	88.00

## TEE - 3 WAY (SCREW TYPE) M.S. CIRCULAR BOX



SR. NO.	PRODUCT CODE	SIZE	STANDARD PACK		RATE
		OD (mm)	Pc./Box	Pc./Carton	Pc
369	PMSB 203	20	20	200	65.50
370	PMSB 253	25	20	200	71.50

## INTERSECTION - 4 WAY (SCREW TYPE) G.I. CIRCULAR BOX



SR. NO.	PRODUCT CODE	SIZE	STANDARD PACK		RATE
		OD (mm)	Pc./Box	Pc./Carton	Pc
371	PGIB 254	25	20	200	92.00

## INTERSECTION - 4 WAY (SCREW TYPE) M.S. CIRCULAR BOX



SR. NO.	PRODUCT CODE	SIZE	STANDARD PACK		RATE
		OD (mm)	Pc./Box	Pc./Carton	Pc
372	PMSB 204	20	20	200	65.50
373	PMSB 254	25	20	200	71.50

## THREAD TYPE G.I. INSPECTION BEND



SR. NO.	PRODUCT CODE	SIZE	STANDARD PACK		RATE
		OD (mm)	Pc./Box	Pc./Carton	Pc
374	PGI 25IBT	25	20	200	84.00

## THREAD TYPE M.S. INSPECTION BEND



SR. NO.	PRODUCT CODE	SIZE	STANDARD PACK		RATE
		OD (mm)	Pc./Box	Pc./Carton	Pc
375	PMS 25IBT	25	20	200	61.00

## SCREW TYPE M.S. INSPECTION BEND



SR. NO.	PRODUCT CODE	SIZE	STANDARD PACK		RATE
		OD (mm)	Pc./Box	Pc./Carton	Pc
376	PMS 20IBS	20	20	200	62.00
377	PMS 25IBS	25	20	200	64.00

## INTERNAL THREAD M.S. NORMAL BEND



SR. NO.	PRODUCT CODE	SIZE	STANDARD PACK		RATE
		OD (mm)	Pc./Box	Pc./Carton	Pc
378	PMS 25NBIT	25	12	144	108.50



## uPVC MINI/MAXI TRUNKING PROFILE & FITTINGS

### Precision uPVC Mini/Maxi Trunking Profile and Fittings

are manufactured from high impact unplasticised polyvinyl chloride (uPVC) grade material capable of withstanding the most hazardous conditions on-site and exceeds the most stringent requirements of Indian and International standards.

The product range brings a whole new world of sophistication and convenience to home, office and commercial establishments and is in accordance with Indian standard IS 14927 - Part 2 and BS EN 50085-2-1. Mini Trunking Profile are also available with self-fixing tape for instant and easy installation. Clip on lid provides security while allowing easy maintenance.

Precision uPVC Maxi Trunking Profile Cable Management System is designed for convenience and safety with compartments for separate wiring applications.

Maxi Trunking Profile Fittings are available in moulded and fabricated form, thus adding a sleek touch to your interiors.

### APPLICATIONS

To organize and protect cables on surface.



Easy and quick  
installation



Secure &  
Elegant look



Various Diameters  
& Grades



Durable & Impact  
Resistant



Fire retardant



Thermal resistant  
(-5° C to +60° C)







# uPVC MINI / MAXI TRUNKING PROFILE

CE FR HSN: 39162019

IVORY

WHITE

IVORY/WHITE

## uPVC MINI TRUNKING PROFILE



SR. NO.	PRODUCT CODE	SIZE (WxH)	STANDARD PACK		RATE (Mtr)
		(mm)	Pc./Mtr	Mtr / Bdl	
379	PT2012	20 x 12	100 x 2m	200	21.50
380	PT2512	25 x 12	100 x 2m	200	25.50
381	PT3015	30 x 15	100 x 2m	200	27.25
382	PT3212	32 x 12	100 x 2m	200	32.00
383	PT1616	16 x 16	100 x 2m	200	20.75
384	PT2516	25 x 16	100 x 2m	200	30.75
385	PT3216	32 x 16	100 x 2m	200	28.50
386	PT3816	38 x 16	50 x 2m	100	50.00
387	PT3825	38 x 25	50 x 2m	100	56.50
388	PT3838	38 x 38	25 x 2m	50	75.00
389	PT5016	50 x 16	50 x 2m	100	86.50

∞ 100 x 50

WHITE

## uPVC MAXI TRUNKING PROFILE



SR. NO.	PRODUCT CODE	SIZE (WxH)	STANDARD PACK		RATE (Mtr)
		(mm)	Pc./Mtr	Mtr / Bdl	
390	PT5050	50 x 50	20 x 2m	40	146.00
391	PT7550	75 x 50	12 x 2m	24	353.50
392	PT7575	75 x 75	9 x 2m	18	462.50
393	PT10050	100 x 50	10 x 2m	20	576.00
394	PT100100	100 x 100	6 x 2m	12	738.50
395	PT15050	150 x 50	5 x 2m	10	876.50
396	PT150100	150 x 100	4 x 2m	8	1066.50

WHITE

## uPVC MAXI TRUNKING PROFILE DIVIDER



SR. NO.	PRODUCT CODE	SIZE (WxH)	STANDARD PACK		RATE (Mtr)
		(mm)	Pc./Mtr	Mtr / Bdl	
∞ 397	PMTD	Standard	50 x 2m	100	79.00

# uPVC MINI / MAXI TRUNKING PROFILE FITTINGS (MOULDED)

HSN: 39174000

IVORY

WHITE

## COUPLER



SR. NO.	PRODUCT CODE	SIZE (W x H) (mm)	STANDARD PACK Pc./Box	RATE Pc
398	PTC 2012	20 x 12	100	2.25
399	PTC 2512	25 x 12	100	2.25
400	PTC 3212	32 x 12	100	2.25
401	PTC 1616	16 x 16	100	3.00
402	PTC 3816	38 x 16	50	5.00
403	PTC 3825	38 x 25	50	6.00
404	PTC 10050	100 x 50(W)	10	14.50

## TEE



SR. NO.	PRODUCT CODE	SIZE (W x H) (mm)	STANDARD PACK Pc./Box	RATE Pc
412	PTT 2012	20 x 12	100	5.00
413	PTT 2512	25 x 12	50	4.50
414	PTT 3212	32 x 12	50	6.00
415	PTT 1616	16 x 16	100	5.00
416	PTT 3816	38 x 16	50	7.25
417	PTT 3825	38 x 25	50	8.75
418	PTT 10050	100 x 50(W)	10	57.50

## ELBOW



SR. NO.	PRODUCT CODE	SIZE (W x H) (mm)	STANDARD PACK Pc./Box	RATE Pc
405	PTB 2012	20 x 12	100	4.50
406	PTB 2512	25 x 12	100	3.00
407	PTB 3212	32 x 12	100	5.00
408	PTB 1616	16 x 16	100	3.00
409	PTB 3816	38 x 16	100	6.00
410	PTB 3825	38 x 25	100	7.50
411	PTB 10050	100 x 50(W)	10	61.00

## INTERNAL BEND



SR. NO.	PRODUCT CODE	SIZE (W x H) (mm)	STANDARD PACK Pc./Box	RATE Pc
419	PTI 2512	25 x 12	100	2.00
420	PTI 3212	32 x 12	100	3.00
421	PTI 1616	16 x 16	100	3.00
422	PTI 3816	38 x 16	100	5.00
423	PTI 3825	38 x 25	50	6.50
424	PTI 10050	100 x 50(W)	10	23.25

# UPVC MINI / MAXI TRUNKING PROFILE FITTINGS (MOULDED)

HSN: 39174000



## EXTERNAL BEND



SR. NO.	PRODUCT CODE	SIZE (W x H) (mm)	STANDARD PACK Pc./Box	RATE Pc
425	PTE 2512	25 x 12	100	2.00
426	PTE 3212	32 x 12	100	4.50
427	PTE 1616	16 x 16	100	5.00
428	PTE 3816	38 x 16	100	6.00
429	PTE 3825	38 x 25	50	9.00
430	PTE 10050	100 x 50(W)	10	41.75

## 4 - WAY



SR. NO.	PRODUCT CODE	SIZE (W x H) (mm)	STANDARD PACK Pc./Box	RATE Pc
431	PTW3212	32 x 12	50	9.75

## END CAP



SR. NO.	PRODUCT CODE	SIZE (W x H) (mm)	STANDARD PACK Pc./Box	RATE Pc
432	PMTC 100	100 x 50(W)	50	13.00

- ABS

## (POLY PROPYLENE) JUNCTION LINKER



SR. NO.	PRODUCT CODE	SIZE (W x H) (mm)	STANDARD PACK		RATE Pc
		Standard	Pc./Box	Pc./Carton	
433	PTJL7575	Standard	25	500	7.50

## TRUNKING KNOCKOUT SURFACE SWITCH BOX



SR. NO.	PRODUCT CODE	SIZE (W x H) (mm)	STANDARD PACK Pc./Box	Pc./Carton	RATE Pc
434	PTSB1	3"x3" (W)	10	300	42.75
435	PTSB2	6"x3" (W)	10	200	71.00

\$ 16 x 16, 25 x 16 Knockout Available  
(W) - White

# UPVC MINI / MAXI TRUNKING PROFILE FITTINGS (FABRICATED)

HSN: 39174000



## ELBOW



SR. NO.	PRODUCT CODE	SIZE (W x H) (mm)	STANDARD PACK Pc./Bag	RATE Pc
436	PMTL50	50 x 50	5	84.00
437	PMTL751	75 x 50	5	201.00
438	PMTL752	75 x 75	5	240.00
439	PMTL1002	100 x 100	5	344.00
440	PMTL1501	150 x 50	5	325.00

## TEE



SR. NO.	PRODUCT CODE	SIZE (W x H) (mm)	STANDARD PACK Pc./Bag	RATE Pc
441	PMTT50	50 x 50	5	118.00
442	PMTT751	75 x 50	5	201.00
443	PMTT752	75 x 75	5	240.00
444	PMTT1002	100 x 100	5	344.00
445	PMTT1501	150 x 50	5	325.00

## INTERNAL ANGLE



SR. NO.	PRODUCT CODE	SIZE (W x H) (mm)	STANDARD PACK Pc./Bag	RATE Pc
446	PMTI50	50 x 50	5	84.00
447	PMTI751	75 x 50	5	201.00
448	PMTI752	75 x 75	5	240.00
449	PMTI1002	100 x 100	5	344.00
450	PMTI1501	150 x 50	5	325.00

## EXTERNAL ANGLE



SR. NO.	PRODUCT CODE	SIZE (W x H) (mm)	STANDARD PACK Pc./Bag	RATE Pc
451	PMTE50	50 x 50	5	84.00
452	PMTE751	75 x 50	5	201.00
453	PMTE752	75 x 75	5	240.00
454	PMTE1002	100 x 100	5	344.00
455	PMTE1501	150 x 50	5	325.00

## END CAP



SR. NO.	PRODUCT CODE	SIZE (W x H) (mm)	STANDARD PACK Pc./Bag	RATE Pc
456	PFTC50	50 x 50	5	23.75
454	PFTC751	75 x 50	5	32.75
458	PFTC752	75 x 75	5	37.75
459	PFTC1002	100 x 100	5	79.50
460	PFTC1501	150 x 50	5	87.50

## METALLIC CABLE MANAGEMENT SYSTEM



Precision after serving India and overseas markets all these years in routing wires through our conduits, we have launched metallic cable management system to route HT/ LT/ LV cables through our Perforated, Ladder & Trunking cable tray with accessories.

**It comes in 3 major categories as follows:**

- a) Trunking Cable Tray (TCT) and Fittings
- b) Perforated Cable Tray (PCT) and Fittings
- c) Ladder Cable Tray (LCT) and Fittings

**All above categories are further divided in various finishes such as:**

- i) Hot Dip Galvanized (HDG)
- ii) Powder Coated (PC)
- iii) Enamel Painted (EP)
- iv) Pre-Galvanized Sheets (PG)

**APPLICATIONS**

Metallic Cable Management System for HT/ LT/ LV cables suitable for Indoor and Outdoor environment.

**FEATURES**

- Available in different Thicknesses ranging from 1.6 mm to 3.0 mm
- Various Width x Height sizes available to make cost effective
- Choice of Finishes / Raw Materials available as per individual requirements
- Available in standard length of 2.5 Mtr
- Once fixed, it is absolutely Maintenance Free
- Availability of lids makes it easy to open in case of future work at later stage
- All raw material used is of IS grade
- Complimentary 2 nos of Coupler Plates & Nut-Bolts with each Cable Tray
- Suitable Fittings available in all categories of Cable Tray
- Hot dip Galvanizing comes with 65  $\mu\text{m}$  as standard Zinc coating. For humid and corrosive environment 80/120  $\mu\text{m}$  coating is also available as per requirements.

# METALLIC CABLE MANAGEMENT SYSTEM

HSN : 73089090

## TRUNKING CABLE TRAY (TCT)



Sr No.	SIZE W x H (mm)	COVER W x H (mm)	Standard Length (Mtr)	Standard Pack (Pc)
461	50 x 38	55 x 12	2.5	1
462	50 x 50	55 x 12	2.5	1
463	100 x 50	105 x 12	2.5	1
464	150 x 50	155 x 12	2.5	1
465	200 x 50	205 x 12	2.5	1
466	300 x 50	305 x 12	2.5	1
467	450 x 50	455 x 12	2.5	1
468	600 x 50	605 x 12	2.5	1
469	100 x 70	105 x 12	2.5	1
470	150 x 75	155 x 12	2.5	1
471	200 x 75	205 x 12	2.5	1
472	300 x 75	305 x 12	2.5	1
473	450 x 75	455 x 12	2.5	1
474	600 x 75	605 x 12	2.5	1

## PERFORATED CABLE TRAY (PCT)



## ACCESSORIES FOR TRUNKING CABLE TRAY (TCT)



Sr No	Fitting	Type	Standard Pack (Pc)
475	45° Bend	Horizontal	1
476	45° Bend	Vertical	1
477	90° Bend	Horizontal	1
478	90° Bend	Vertical	1
479	Tee joint	Equal	1
480	Tee joint	Unequal	1
481	Reducer joint	Concentric	1
482	Reducer joint	Eccentric	1
483	4 way Cross joint	Equal	1
484	4 way Cross joint	Unequal	1

**All above sizes are available:**

In 1.60mm, 2.0 mm, 2.50mm and 3.0mm thickness also.

In HR / CRCA / Pre - Galvanised / Aluminum material also.

In Hot dip Galvanised / Powder Coated / Painted / Pre - Galvanised finishes also.

All above fittings are available for TCT range from 50 x 38 mm to 600 x 75 mm.

Sr No	Size W x H (mm)	Standard Length (Mtr)	Standard Pack (Pc)
485	50 x 50	2.5	1
486	100 x 50	2.5	1
487	150 x 50	2.5	1
488	200 x 50	2.5	1
489	300 x 50	2.5	1
490	450 x 50	2.5	1
491	600 x 50	2.5	1
492	100 x 75	2.5	1
493	150 x 75	2.5	1
494	200 x 75	2.5	1
495	300 x 75	2.5	1
496	450 x 75	2.5	1
497	600 x 75	2.5	1
498	150 x 100	2.5	1
499	200 x 100	2.5	1
500	300 x 100	2.5	1
501	450 x 100	2.5	1
502	600 x 100	2.5	1

# METALLIC CABLE MANAGEMENT SYSTEM

HSN : 73089090

## ACCESSORIES FOR PERFORATED CABLE TRAY (PCT)



Sr No	Fitting	Type	Standard Pack (Pc)
503	45° Bend	Horizontal	1
504	45° Bend	Vertical	1
505	90° Bend	Horizontal	1
506	90° Bend	Vertical	1
507	Tee joint	Equal	1
508	Tee joint	Unequal	1
509	Reducer joint	Concentric	1
510	Reducer joint	Eccentric	1
511	4 way Cross joint	Equal	1
512	4 way Cross joint	Unequal	1

**All above sizes are available:**

In 1.60mm, 2.0 mm, 2.50mm and 3.0mm thickness also.

In HR / CRCA / Pre - Galvanised / Aluminum material also.

In Hot dip Galvanised / Powder Coated / Painted / Pre - Galvanised finishes also.

Covers are available for Perforated Cable Tray also.

All above fittings are available for PCT range from 50 x 50 mm to 600 x 100 mm.



## LADDER CABLE TRAY (LCT)

Sr No	Size W x H (mm)	Standard Length (Mtr)	Standard Pack (Pc)
513	100 x 50	2.5	1
514	150 x 50	2.5	1
515	200 x 50	2.5	1
516	300 x 50	2.5	1
517	450 x 50	2.5	1
518	600 x 50	2.5	1
519	750 x 50	2.5	1
520	900 x 50	2.5	1
521	1000 x 50	2.5	1
522	100 x 75	2.5	1
523	150 x 75	2.5	1
524	200 x 75	2.5	1
525	300 x 75	2.5	1
526	450 x 75	2.5	1
527	600 x 75	2.5	1
528	750 x 75	2.5	1

Sr No	Size W x H (mm)	Standard Length (Mtr)	Standard Pack (Pc)
529	900 x 75	2.5	1
530	1000 x 75	2.5	1
531	1200 x 75	2.5	1
532	1500 x 75	2.5	1
533	150 x 100	2.5	1
534	200 x 100	2.5	1
535	300 x 100	2.5	1
536	450 x 100	2.5	1
537	600 x 100	2.5	1
538	750 x 100	2.5	1
539	900 x 100	2.5	1
540	1000 x 100	2.5	1
541	1200 x 100	2.5	1
542	1500 x 100	2.5	1

# METALLIC CABLE MANAGEMENT SYSTEM

HSN : 73089090

## ACCESSORIES FOR LADDER CABLE TRAY (LCT)



Sr No	Fitting	Type	Standard Pack (pc)
543	45° Bend	Horizontal	1
544	45° Bend	Vertical	1
545	90° Bend	Horizontal	1
546	90° Bend	Vertical	1
547	Tee joint	Equal	1
548	Tee joint	Unequal	1
549	Reducer joint	Concentric	1
550	Reducer joint	Eccentric	1
551	4 way Cross joint	Equal	1
552	4 way Cross joint	Unequal	1

**All above sizes are available:**  
 In 1.60mm, 2.0 mm, 2.50mm and 3.0mm thickness also.  
 In HR / CRCA / Pre - Galvanised / Aluminum material also.  
 In Hot dip Galvanised / Powder Coated / Painted / Pre - Galvanised finishes also.  
 Covers are available for Ladder Cable Tray also.  
 All above fittings are available for LCT range from 100 x 50 mm to 1500 x 100 mm



## SLOTTED L SECTION

Sr No	Size (mm)	Standard Length (Mtr)	Standard Pack (Pc)
553	25 x 25	2.5	1
554	25 x 30	2.5	1
555	25 x 35	2.5	1
556	30 x 30	2.5	1
557	30 x 35	2.5	1
558	30 x 40	2.5	1
559	30 x 45	2.5	1
560	35 x 30	2.5	1
561	35 x 35	2.5	1
562	30 x 40	2.5	1
563	40 x 35	2.5	1
564	40 x 40	2.5	1
565	40 x 45	2.5	1
566	40 x 50	2.5	1
567	45 x 45	2.5	1
568	45 x 50	2.5	1
569	50 x 50	2.5	1

## SLOTTED C SECTION



Sr No	Size (mm)	Standard Length (Mtr)	Standard Pack (Pc)
570	15 x 30 x 15	2.5	1
571	15 x 35 x 15	2.5	1
572	20 x 35 x 20	2.5	1
573	25 x 35 x 25	2.5	1
574	15 x 40 x 15	2.5	1
575	20 x 40 x 20	2.5	1
576	25 x 40 x 25	2.5	1
577	15 x 50 x 15	2.5	1
578	20 x 50 x 20	2.5	1
579	25 x 50 x 25	2.5	1

## SLOTTED Z SECTION



Sr No	Size (mm)	Standard Length (Mtr)	Standard Pack (Pc)
580	25 x 25 x 25	2.5	1
581	25 x 30 x 25	2.5	1
582	30 x 30 x 30	2.5	1
583	30 x 35 x 30	2.5	1
584	30 x 40 x 30	2.5	1
585	30 x 50 x 30	2.5	1
586	35 x 30 x 35	2.5	1
587	35 x 35 x 35	2.5	1
588	35 x 40 x 35	2.5	1
589	35 x 50 x 35	2.5	1
590	40 x 35 x 40	2.5	1
591	40 x 40 x 40	2.5	1
592	45 x 40 x 45	2.5	1
593	45 x 45 x 45	2.5	1
594	45 x 50 x 45	2.5	1
595	50 x 45 x 50	2.5	1
596	50 x 50 x 50	2.5	1

**All above sizes are available:**  
 In 1.60mm, 2.0 mm, 2.50mm and 3.0mm thickness also.  
 In HR / CRCA / Pre - Galvanised / Aluminum material also.  
 In Hot dip Galvanised / Powder Coated / Painted / Pre - Galvanised finishes also.



## uPVC PANEL TRUNKING

**Precision uPVC Panel Trunking** is manufactured from high impact unplasticised polyvinyl chloride (uPVC) to ensure panel & machinery safety in extreme conditions. These trunkings are ideal to channelise medium, big size panels & various applications where economy, space saving, safety and durability are paramount.

### APPLICATIONS

To conduct, organise and protect cables inside electrical and telecommunication panels, industrial machinery wiring, computer LAN wiring and data centers.

### FEATURES



Fire retardant



Thermal resistant  
(-5° C to +60° C)



High Tensile  
Strength  
(390 kg/cm<sup>2</sup>)

- Non-brittle, wrap proof.
- Vertical slides and detachable strips facilitates systematic wiring, permits faster connections, additions and fault tracing of wires.
- Avoids bunching, taping, and provides complete electrical insulation.
- Unique cover locking design prevents popping of wires while removing cover
- Elongated slots at bottom allows flexible mounting.



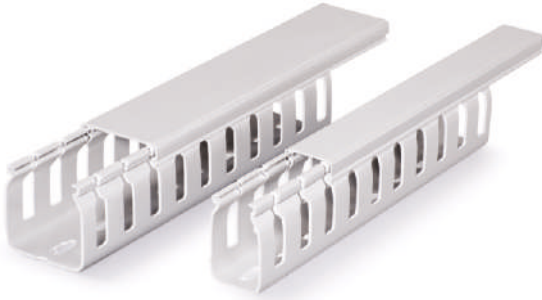
# UPVC PANEL TRUNKING ≈ FRLS (€)

HSN : 85381010

GREY

## STANDARD SLOT

### UPVC PANEL TRUNKING



SR. NO.	PRODUCT CODE	SIZE	STANDARD PACK		RATE (Mtr)
		H x W(mm)	Pc/Mtr	Mtr/Carton	
597	PPT1515	15 x 15	200 x 1m	200	47.75
598	PPT2525	25 x 25	130 x 1m	130	72.50
599	PPT3025	30 x 25	125 x 1m	125	77.25
600	PPT4525	45 x 25	90 x 1m	90	95.25
601	PPT4545	45 x 45	50 x 1m	50	131.25
602	PPT4560	45 x 60	50 x 1m	50	170.00
603	PPT6025	60 x 25	70 x 1m	70	121.50
604	PPT6040	60 x 40	60 x 1m	60	152.25
605	PPT6045	60 x 45	50 x 1m	50	153.50
606	PPT6060	60 x 60	40 x 1m	40	192.00
607	PPT7525	75 x 25	60 x 1m	60	154.50
608	PPT7575	75 x 75	30 x 1m	30	282.50
609	PPT10075	100 x 75	24 x 1m	24	464.50
610	PPT100100	100 x 100	16 x 1m	16	549.25

## THIN SLOT

### UPVC PANEL TRUNKING



SR. NO.	PRODUCT CODE	SIZE	STANDARD PACK		RATE (Mtr)
		H x W(mm)	Pc/Mtr	Mtr/Carton	
611	PPT3025TS	30 x 25	125 x 1m	125	80.75
612	PPT4525TS	45 x 25	90 x 1m	90	99.25
613	PPT4545TS	45 x 45	50 x 1m	50	139.25
614	PPT4560TS	45 x 60	50 x 1m	50	172.75
615	PPT6025TS	60 x 25	70 x 1m	70	130.25
616	PPT6040TS	60 x 40	60 x 1m	60	160.00
617	PPT6045TS	60 x 45	50 x 1m	50	161.25
618	PPT6060TS	60 x 60	40 x 1m	40	203.00

## TOP COVER

### UPVC PANEL TRUNKING



SR. NO.	PRODUCT CODE	SIZE	STANDARD PACK		RATE (Mtr)
		(mm)	Pc/Mtr	Mtr/Carton	
619	PPT25T	25	100 x 1m	100	30.00
620	PPT40T	40	50 x 1m	50	48.75
621	PPT45T	45	50 x 1m	50	52.00
622	PPT60T	60	50 x 1m	50	79.75
623	PPT75T	75	25 x 1m	25	80.75
624	PPT100T	100	25 x 1m	25	129.25

≈ FRLS: Fire Retardant - Low Smoke





## CORRUGATED FLEXIBLE CONDUIT PIPES & FITTINGS

**Precision Corrugated Flexible Conduit Pipes & Fittings** come in a wide and comprehensive range of material variants to suit a variety of applications. These conduits are manufactured in variants based on the final application for wiring purposes.

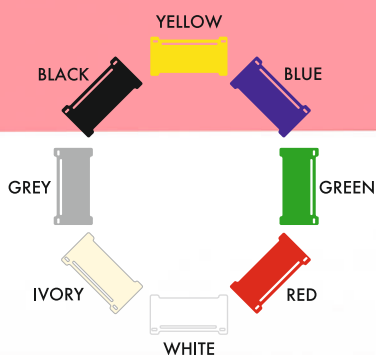
**POLYPROPYLENE FLEXIBLE CONDUITS** are the best solution for applications where resistance to constant flexing and vibration is essential, these conduits display excellent flexibility. Moreover, they are light weight and easy to install which makes them very popular. Temperature resistant from  $-5^{\circ}\text{C}$  to  $+90^{\circ}\text{C}$ .

**STEEL WIRE REINFORCED FLEXIBLE UPVC CONDUITS** are manufactured with soft polyvinyl chloride (uPVC) wall fused to high tensile steel wire in a coiled state. These conduits are unaffected by inorganic acid, alkali & saline water. Most suitable for electrical wiring in buildings, switch boards, panels, machinery, dust collectors, air dusting, exhaust of fumes, shrouds of railway coach wiring and hospital equipments. Temperature resistant from  $-5^{\circ}\text{C}$  to  $+60^{\circ}\text{C}$ .

**GALVANISED STEEL FLEXIBLE CONDUIT** Precision Steel Flexible Conduit Pipes are made from galvanised steel, helical wound strips having a square lock type construction and are manufactured in accordance to Indian/British Standards in galvanized zinc coating with spiral corrugated pattern finished surface. Mostly used as low pressure hose in Industrial domestic air conditioning, ventilation systems and as mechanical protection for insulated electrical cables & wires which may be exposed to atmospheric conditions.

### GALVANISED STEEL FLEXIBLE CONDUIT WITH PVC COATING

Precision PVC Coated Steel Flexible Conduit Pipes are made from galvanized steel, helical wound strips having a square lock type construction and are manufactured in accordance to Indian/British Standards in poly vinyl coating. They are available in black/grey colour with spiral corrugated pattern finished surface. Most suitable for mechanical protection of cable and wire in tunnels, hospitals, high-rise office blocks and public buildings.



Fire retardant



Corrosion Free

# CORRUGATED FLEXIBLE CONDUIT PIPES & FITTINGS

HSN : 39173100



## DIMENSIONS OF CORRUGATED FLEXIBLE CONDUITS

Nominal Diameter (mm)	Maximum Outside Diameter (mm)	Tolerance on Outside Diameter (mm)	Minimum Inside Diameter (mm)
10	10	- 0.1	7.0
16	16	- 0.3	10.7
20	20	- 0.3	14.1
25	25	- 0.4	18.3
32	32	- 0.4	24.3
40	40	- 0.4	31.2
50	50	- 0.5	39.6
63	63	- 0.6	52.6

## (PP) POLY PROPYLENE



SR. NO.	PRODUCT CODE	SIZE	STANDARD PACK		RATE (Mtr)
		OD (mm)	Mtr./Coil	Mtr./Bag	
625	PCFC 10	10	100	1000	8.00
626	PCFC 16	16	50	500	8.00
627	PCFC 20	20	50	500	11.00
628	PCFC 25	25	25	250	16.00
629	PCFC 32	32	25	250	27.00
630	PCFC 40	40	20	100	37.50
631	PCFC 50	50	15	75	56.00
632	PCFC 63	63	10	50	87.00



SR. NO.	PRODUCT CODE	SIZE	STANDARD PACK		RATE (Mtr)
		OD (mm)	Mtr./Coil	Mtr./Bag	
633	PCCL 10	10	100	1000	12.00
634	PCCL 16	16	50	500	13.00
635	PCCL 20	20	50	500	18.00
636	PCCL 25	25	25	250	24.50
637	PCCL 32	32	25	250	40.00
638	PCCL 40	40	20	100	47.50
639	PCCL 50	50	15	75	65.50
640	PCCL 63	63	10	50	102.00

## DIMENSIONS OF GALVANIZED STEEL FLEXIBLE CONDUIT PIPES

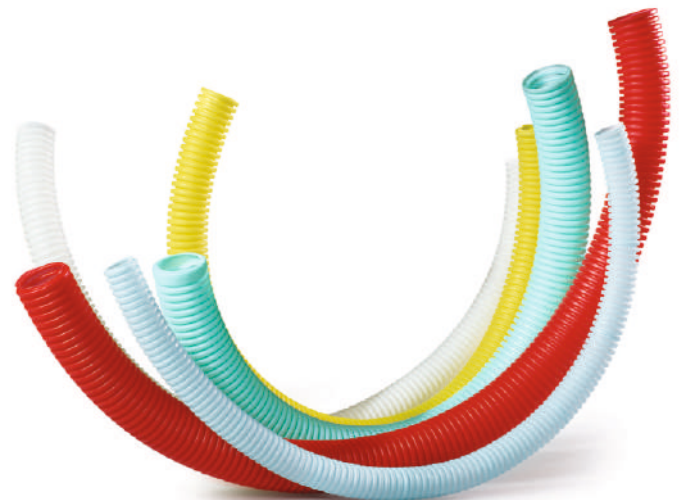
Nominal Size (mm)	Nominal Size (inch)	OD (mm)	ID (mm)	BENDING radius/mm
16	1/2"	15.5	12.5	40
20	3/4"	22.5	19.5	55
25	1"	28	25.0	60
32	1 1/4"	35.0	32.0	70
40	1 1/2"	42.0	38.0	80
50	2	54.0	50.0	90

\*Tolerance: Size below 50mm, +/- 1mm & above 50mm +/- 3mm

## DIMENSIONS OF GALVANIZED STEEL FLEXIBLE CONDUIT PIPES WITH PVC COATING

Nominal Size (mm)	Nominal Size (inch)	OD (mm)	ID (mm)	BENDING radius/mm
16	1/2"	16.5	12.5	40
20	3/4"	23.5	19.5	55
25	1"	29	25.0	60
32	1 1/4"	36.5	32.0	70
40	1 1/2"	44.0	38.0	80
50	2	57.0	51.0	90

\*Tolerance: Size below 50mm, +/- 1mm & above 50mm +/- 3mm



# CORRUGATED FLEXIBLE CONDUIT PIPES & FITTINGS

## CORRUGATED FLEXIBLE CONDUIT GLAND

HSN : 39174000



SR. NO.	PRODUCT CODE	SIZE	STANDARD PACK		RATE
		OD (mm)	Pc./Box	Pc./Carton	Pc
641	PFAG 16	16	125	2250	6.00
642	PFAG 20	20	75	1350	8.00
643	PFAG 25	25	50	900	10.50
644	PFAG 32	32	30	540	12.50
645	PFAG 40	40	20	360	18.00
646	PFAG 50	50	5	150	23.50

## GALVANIZED STEEL FLEXIBLE CONDUIT PIPES

HSN : 83071000



SR. NO.	PRODUCT CODE	NORMAL SIZE (mm)	NORMAL SIZE (Inch)	STANDARD PACK		RATE
				Mtr./Coil	Mtr./Bag	(Mtr)
662	PGIFC 16	16	1/2"	15	210	38.50
663	PGIFC 20	20	3/4"	15	150	51.50
664	PGIFC 25	25	1"	15	105	78.50
665	PGIFC 32	32	1 1/4"	15	75	93.50
666	PGIFC 40	40	1 1/2"	15	75	105.00
667	PGIFC 50	50	2"	10	50	156.00

## STEEL WIRE REINFORCED FLEXIBLE uPVC CONDUIT PIPE

HSN : 39172190



SR. NO.	PRODUCT CODE	SIZE	STANDARD PACK		RATE
		ID (mm)	Mtr./Coil	Mtr./Bag	(Mtr)
647	PCWR 10	10	30	300	43.50
648	PCWR 16	16	30	300	57.00
649	PCWR 20	20	30	240	73.50
650	PCWR 25	25	30	210	90.50
651	PCWR 30	30	30	150	117.00
652	PCWR 40	40	30	120	135.50
653	PCWR 50	50	30	90	162.00
654	PCWR 60	60	15	75	227.00

## GALVANIZED STEEL FLEXIBLE CONDUIT WITH PVC COATING

HSN : 83071000



SR. NO.	PRODUCT CODE	NORMAL SIZE (mm)	NORMAL SIZE (Inch)	STANDARD PACK		RATE
				Mtr./Coil	Mtr./Bag	(Mtr)
668	PGIFCP 16	16	1/2"	50	250	59.00
669	PGIFCP20	20	3/4"	25	150	78.50
670	PGIFCP 25	25	1"	25	125	119.50
671	PGIFCP 32	32	1 1/4"	15	75	142.00
672	PGIFCP 40	40	1 1/2"	15	75	167.50
673	PGIFCP 50	50	2"	15	60	238.00

## STEEL WIRE REINFORCED FLEXIBLE uPVC CONDUIT GLAND

HSN : 39174000



SR. NO.	PRODUCT CODE	SIZE	STANDARD PACK		RATE
		OD (mm)	Pc./Box	Pc./Carton	Pc
655	PFRG 10	10	75	1350	10.50
656	PFRG 16	16	60	1080	11.50
657	PFRG 20	20	45	810	14.50
658	PFRG 25	25	30	540	19.50
659	PFRG 30	30	20	360	24.00
660	PFRG 40	40	15	270	31.50
661	PFRG 50	50	5	150	45.00



[electrical@precisionpipes.com](mailto:electrical@precisionpipes.com)  
[www.precisionpipes.com](http://www.precisionpipes.com)

---

**We Care +91 77150 00015**

---

**PRECISION PLASTIC INDUSTRIES PVT. LTD.**

19/D, Nand Jyot Industrial Estate, Safed Pool, Andheri - Kurla Road,  
Andheri East, Mumbai 400 072, Maharashtra, India.