



PRICE LIST
Jan.12, 2024

**SAFETY
MEIN
SAMJHOTA
NAHIN.**





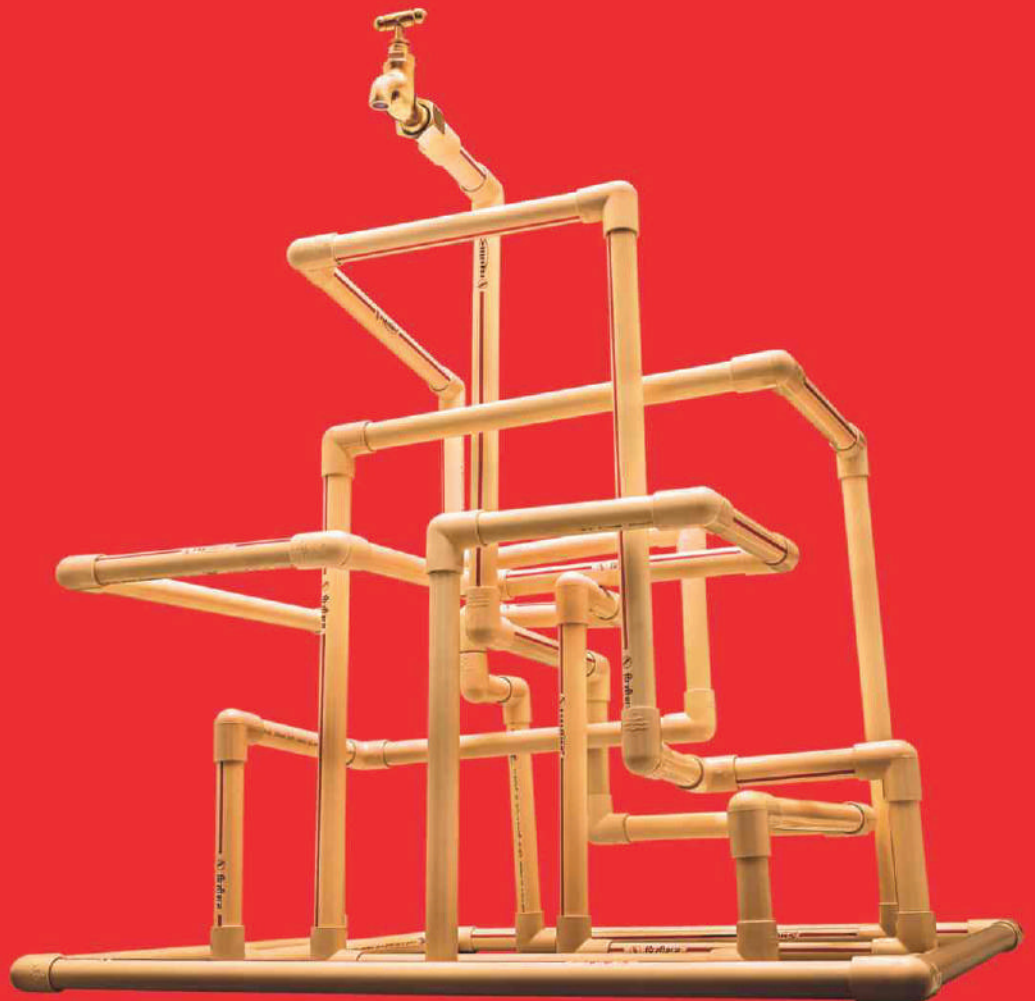
PRECISION[®]

Pipes | Desh ki Lifeline



CPVC PIPES & FITTINGS

Precision Chlorinated Poly Vinyl Chloride (CPVC) Pipes and Fittings are manufactured from a specially formulated compound in accordance with Indian Standard IS 15778 and ASTM D 2846 specifications. These pipes and fittings are a perfect choice, having many advantages over the conventional systems as they are corrosion free and resistant to most acids, bases, salts and halogens.





APPLICATIONS

Channelising hot and cold water supply and potable water in homes, apartments, hotels, commercial complex, hospitals, gas and solar applications.

FEATURES



Various Diameters & Grades



Fire retardant & corrosion free



Easy & quick installation



Chemical resistant



Hot & cold water compatible

- Time tested operational life of 50 years.
- Economical, maintenance free.
- Heat efficient and lower installation cost.
- Low thermal expansion.
- Hygienic and environment friendly.
- Service temperature upto 82°C.

COLOUR:



DIMENSIONS OF SDR 11 (CLASS 1) CPVC PIPES-IS 15778

Nominal Size		Nominal OD	Wall Thickness		Working Pressure/kg/cm ²	
Inch	mm				27°C	82°C
1/2	15	15.9	1.7	2.2	27.6	6.8
3/4	20	22.2	2.0	2.5	27.6	6.8
1	25	28.6	2.6	3.1	27.6	6.8
1 1/4	32	34.9	3.2	3.7	27.6	6.8
1 1/2	40	41.3	3.8	4.3	27.6	6.8
2	50	54.0	4.9	5.5	27.6	6.8

DIMENSIONS OF SCH 80 CPVC PIPES - ASTM F 441

Nominal Size	Nominal OD	Wall Thickness		Working Pressure/kg/cm ²		
				27°C	82°C	
2 1/2	65	73.02	7.01	7.85	29.54	7.38
3	80	88.9	7.62	8.53	26.02	6.52
4	100	114.3	8.56	9.58	22.5	5.62

DIMENSIONS OF SDR 13.5 (CLASS 2) CPVC PIPES-IS 15778

Nominal Size		Nominal OD	Wall Thickness		Working Pressure/kg/cm ²	
Inch	mm				27°C	82°C
1/2	15	15.9	1.4	1.9	21.8	5.5
3/4	20	22.2	1.7	2.2	21.8	5.5
1	25	28.6	2.1	2.6	21.8	5.5
1 1/4	32	34.9	2.6	3.1	21.8	5.5
1 1/2	40	41.3	3.1	3.6	21.8	5.5
2	50	54.0	4.0	4.6	21.8	5.5

DIMENSIONS OF SCH 40 CPVC PIPES - ASTM F 441

Nominal Size	Nominal OD	Wall Thickness		Working Pressure/kg/cm ²		
				27°C	82°C	
2 1/2	65	73.02	5.16	5.80	27.1	5.27
3	80	88.9	5.49	6.10	18.28	4.57
4	100	114.3	6.02	6.70	15.47	3.87

MINIMUM DIMENSIONS FROM CENTER TO END OF SOCKET (LAYING LENGTH)

CPVC SDR 11 Pipe Fittings

inch	mm	inch	mm	inch	mm	inch	mm
½	15	0.382	9.7	0.183	4.65	0.102	2.59
¾	20	0.507	12.88	0.235	5.97	0.102	2.59
1	25	0.633	16.08	0.287	7.29	0.102	2.59
1¼	32	0.758	19.25	0.339	8.61	0.102	2.59
1½	40	0.884	22.45	0.391	9.93	0.102	2.59
2	50	1.134	28.83	0.495	12.57	0.102	2.59

DIMENSIONS FOR TAPERED SOCKET OF CPVC SDR 11 PIPE FITTINGS

Nom. Size	Socket Entrance				Socket Bottom				Socket Entrance		ID		Wall Thickness				Entrance	
	Diameter mm				Diameter mm				inch	mm	inch	mm	Socket		Socket Bottom		F	F
Inch	A Aver	A Aver	A Tole	A Tole	B Aver	B Aver	B Tole	B Tole	C min	C min	D min	D min	EA min	EA min	EB min	EB min	F	F
½	0.633	16.08	0.003	0.08	0.619	15.72	0.003	0.08	0.500	12.70	0.489	12.42	0.068	1.73	0.102	2.59	0.128	3.25
¾	0.884	22.45	0.003	0.08	0.870	22.10	0.003	0.08	0.700	17.78	0.715	18.16	0.080	2.03	0.102	2.59	0.128	3.25
1	1.135	28.83	0.003	0.08	1.121	28.47	0.003	0.08	0.900	22.86	0.921	23.39	0.102	2.59	0.102	2.59	0.128	3.25
1¼	1.386	35.20	0.003	0.08	1.372	34.85	0.003	0.08	1.100	27.94	1.125	28.58	0.125	3.18	0.125	3.18	0.156	3.96
1½	1.640	41.66	0.004	0.10	1.622	41.20	0.004	0.10	1.300	33.02	1.329	33.76	0.148	3.76	0.148	3.76	0.185	4.70
2	2.141	54.38	0.004	0.10	2.123	53.92	0.004	0.10	1.700	43.18	1.739	44.17	0.193	4.90	0.193	4.90	0.241	6.12
2 ½	2.889	73.38	0.007	0.18	2.868	72.85	0.007	0.18	1.75	44.45	2.25	57.15	0.276	7.01	0.345	8.76	0.9	2.3
3	3.516	89.31	0.008	0.20	3.492	88.70	0.008	0.20	1.875	47.63	2.82	71.63	0.300	7.62	0.375	9.53	0.9	2.3
4	4.518	114.76	0.009	0.23	4.491	114.07	0.009	0.23	2.25	57.15	3.737	94.92	0.337	8.56	0.42	10.67	0.9	2.3



CPVC PIPES IS 15778 & ASTM F 441

HSN: 39172390

SR. NO.	PRODUCT CODE	NOMINAL SIZE (mm)	NOMINAL SIZE (inch)	STD. PACK (pcs.)	RATE (mtr)	RATE 3mtr/pc
CPVC PIPES - SDR 11 (Length: 3mtr.)						
1	CPVC 1115/3	15	½	70	72.00	216.00
2	CPVC 1120/3	20	¾	50	122.00	366.00
3	CPVC 1125/3	25	1	30	199.00	597.00
4	CPVC 1132/3	32	1¼	20	290.00	870.00
5	CPVC 1140/3	40	1½	15	405.00	1215.00
6	CPVC 1150/3	50	2	10	684.00	2052.00
CPVC PIPES - SCH 80 (Length: 3mtr.)						
7	CPVC 8065/3	65	2½	5	1377.00	4131.00
8	CPVC 8080/3	80	3	3	1848.00	5544.00
9	CPVC 80100/3	100	4	2	2691.00	8073.00

SR. NO.	PRODUCT CODE	NOMINAL SIZE (mm)	NOMINAL SIZE (inch)	STD. PACK (pcs.)	RATE (mtr)	RATE 5mtr/pc
CPVC PIPES - SDR 11 (Length: 5mtr.)						
19	CPVC 1115/5	15	½	70	72.00	360.00
20	CPVC 1120/5	20	¾	50	122.00	610.00
21	CPVC 1125/5	25	1	30	199.00	995.00
22	CPVC 1132/5	32	1¼	20	290.00	1450.00
23	CPVC 1140/5	40	1½	15	405.00	2025.00
24	CPVC 1150/5	50	2	10	684.00	3420.00
CPVC PIPES - SCH 80 (Length: 5mtr.)						
25	CPVC 8065/5	65	2½	5	1377.00	6885.00
26	CPVC 8080/5	80	3	3	1848.00	9240.00
27	CPVC 80100/5	100	4	2	2691.00	13455.00

SR. NO.	PRODUCT CODE	NOMINAL SIZE (mm)	NOMINAL SIZE (inch)	STD. PACK (pcs.)	RATE (mtr)	RATE 3mtr/pc
CPVC PIPES - SDR 13.5 (Length: 3mtr.)						
10	CPVC 1315/3	15	½	70	63.00	189.00
11	CPVC 1320/3	20	¾	50	108.00	324.00
12	CPVC 1325/3	25	1	30	165.00	495.00
13	CPVC 1332/3	32	1¼	20	247.00	741.00
14	CPVC 1340/3	40	1½	15	341.00	1023.00
15	CPVC 1350/3	50	2	10	571.00	1713.00
CPVC PIPES - SCH 40 (Length: 3mtr.)						
16	CPVC 4065/3	65	2½	5	1052.00	3156.00
17	CPVC 4080/3	80	3	3	1375.00	4125.00
18	CPVC 40100/3	100	4	2	1956.00	5868.00

SR. NO.	PRODUCT CODE	NOMINAL SIZE (mm)	NOMINAL SIZE (inch)	STD. PACK (pcs.)	RATE (mtr)	RATE 5mtr/pc
CPVC PIPES - SDR 13.5 (Length: 5mtr.)						
28	CPVC 1315/5	15	½	70	63.00	315.00
29	CPVC 1320/5	20	¾	50	108.00	540.00
30	CPVC 1325/5	25	1	30	165.00	825.00
31	CPVC 1332/5	32	1¼	20	247.00	1235.00
32	CPVC 1340/5	40	1½	15	341.00	1705.00
33	CPVC 1350/5	50	2	10	571.00	2855.00
CPVC PIPES - SCH 40 (Length: 5mtr.)						
34	CPVC 4065/5	65	2½	5	1052.00	5260.00
35	CPVC 4080/5	80	3	3	1375.00	6875.00
36	CPVC 40100/5	100	4	2	1956.00	9780.00

SDR 11/SCH 80 - Red Stripe

SDR 13.5/SCH 40 - Brown Stripe

CPVC FITTINGS SDR 11 ASTM D 2846

HSN : 39174000



COUPLER

SR. NO.	PRODUCT CODE	STANDARD SIZE		STD. PACK		RATE (pc)
		(mm)	(inch)	Pc./Bag	Pc./Ctn.	
37	CPVC 15C	15	1/2	100	1000	8.00
38	CPVC 20C	20	3/4	100	700	15.50
39	CPVC 25C	25	1	50	300	25.50
40	CPVC 32C	32	1 1/4	10	200	51.00
41	CPVC 40C	40	1 1/2	10	110	79.00
42	CPVC 50C	50	2	10	70	166.00
43	CPVC 65C	65	2 1/2	4	-	542.00



ELBOW 45°

SR. NO.	PRODUCT CODE	STANDARD SIZE		STD. PACK		RATE (pc)
		(mm)	(inch)	Pc./Bag	Pc./Ctn.	
59	CPVC 1545E	15	1/2	50	750	11.00
60	CPVC 2045E	20	3/4	25	300	18.50
61	CPVC 2545E	25	1	20	240	36.50
62	CPVC 3245E	32	1 1/4	10	140	78.00
63	CPVC 4045E	40	1 1/2	5	80	126.00
64	CPVC 5045E	50	2	5	35	232.00



ELBOW

SR. NO.	PRODUCT CODE	STANDARD SIZE		STD. PACK		RATE (pc)
		(mm)	(inch)	Pc./Bag	Pc./Ctn.	
44	CPVC 15E	15	1/2	100	600	13.00
45	CPVC 20E	20	3/4	50	550	19.50
46	CPVC 25E	25	1	40	240	38.00
47	CPVC 32E	32	1 1/4	10	120	85.00
48	CPVC 40E	40	1 1/2	10	80	140.00
49	CPVC 50E	50	2	5	40	253.50



MALE THREAD ADAPTOR

SR. NO.	PRODUCT CODE	STANDARD SIZE		STD. PACK		RATE (pc)
		(mm)	(inch)	Pc./Bag	Pc./Ctn.	
65	CPVC 15M	15	1/2	100	800	12.00
66	CPVC 20M	20	3/4	100	600	20.50
67	CPVC 25M	25	1	50	400	29.00
68	CPVC 32M	32	1 1/4	10	120	53.50
69	CPVC 40M	40	1 1/2	10	120	80.00
70	CPVC 50M	50	2	10	60	154.50



TEE

SR. NO.	PRODUCT CODE	STANDARD SIZE		STD. PACK		RATE (pc)
		(mm)	(inch)	Pc./Bag	Pc./Ctn.	
50	CPVC 15T	15	1/2	100	400	15.50
51	CPVC 20T	20	3/4	50	350	28.50
52	CPVC 25T	25	1	25	175	48.00
53	CPVC 32T	32	1 1/4	10	100	106.00
54	CPVC 40T	40	1 1/2	10	50	171.00
55	CPVC 50T	50	2	5	25	312.00
56	CPVC 65T	65	2 1/2	2	-	1175.00
57	CPVC 80T	80	3	1	-	1747.00
58	CPVC 100T	100	4	1	-	2920.00



FEMALE THREAD ADAPTOR

SR. NO.	PRODUCT CODE	STANDARD SIZE		STD. PACK		RATE (pc)
		(mm)	(inch)	Pc./Bag	Pc./Ctn.	
71	CPVC 15F	15	1/2	50	500	18.50
72	CPVC 20F	20	3/4	50	450	25.50
73	CPVC 25F	25	1	25	250	42.50
74	CPVC 32F	32	1 1/4	10	140	83.50
75	CPVC 40F	40	1 1/2	10	100	124.00
76	CPVC 50F	50	2	5	50	203.50

CPVC FITTINGS SDR 11 ASTM D 2846

HSN : 39174000



END CAP

SR. NO.	PRODUCT CODE	STANDARD SIZE		STD. PACK		RATE (pc)
		(mm)	(inch)	Pc./Bag	Pc./Ctn.	
77	CPVC 15EC	15	1/2	100	1500	6.50
78	CPVC 20EC	20	3/4	100	600	11.50
79	CPVC 25EC	25	1	100	300	19.50
80	CPVC 32EC	32	1 1/4	25	150	40.00
81	CPVC 40EC	40	1 1/2	15	120	56.00
82	CPVC 50EC	50	2	5	60	119.50
83	CPVC 65EC	65	2 1/2	10	-	236.00
84	CPVC 80EC	80	3	10	-	353.00
85	CPVC 100EC	100	4	2	-	612.00



REDUCER TEE

SR. NO.	PRODUCT CODE	STANDARD SIZE		STD. PACK		RATE (pc)
		(mm)	(inch)	Pc./Bag	Pc./Ctn.	
101	CPVC 2015RT	20x20x15	3/4 x 3/4 x 1/2	10	150	34.50
102	CPVC 2515RT	25x25x15	1 x 1 x 1/2	10	100	59.00
103	CPVC 2520RT	25x25x20	1 x 1 x 3/4	10	100	60.00
104	CPVC 3215RT	32x32x15	1 1/4 x 1 1/4 x 1/2	10	50	100.50
105	CPVC 3220RT	32x32x20	1 1/4 x 1 1/4 x 3/4	10	50	100.50
106	CPVC 3225RT	32x32x25	1 1/4 x 1 1/4 x 1	10	50	106.50
107	CPVC 4015RT	40x40x15	1 1/2 x 1 1/2 x 1/2	10	30	157.00
108	CPVC 4020RT	40x40x20	1 1/2 x 1 1/2 x 3/4	10	30	158.50
109	CPVC 4025RT	40x40x25	1 1/2 x 1 1/2 x 1	10	30	163.50
110	CPVC 4032RT	40x40x32	1 1/2 x 1 1/2 x 1 1/4	10	30	178.00
111	CPVC 5015RT	50x50x15	2 x 2 x 1/2	5	15	295.00
112	CPVC 5020RT	50x50x20	2 x 2 x 3/4	5	15	298.50
113	CPVC 5025RT	50x50x25	2 x 2 x 1	5	15	307.00
114	CPVC 5032RT	50x50x32	2 x 2 x 1 1/4	5	15	314.00
115	CPVC 5040RT	50x50x40	2 x 2 x 1 1/2	5	15	338.50



REDUCER COUPLER

SR. NO.	PRODUCT CODE	STANDARD SIZE		STD. PACK		RATE (pc)
		(mm)	(inch)	Pc./Bag	Pc./Ctn.	
86	CPVC 2015RC	20 x 15	3/4 x 1/2	100	500	15.00
87	CPVC 2515RC	25 x 15	1 x 1/2	100	300	24.00
88	CPVC 2520RC	25 x 20	1 x 3/4	100	400	26.00
89	CPVC 3215RC	32 x 15	1 1/4 x 1/2	10	150	37.00
90	CPVC 3220RC	32 x 20	1 1/4 x 3/4	10	150	39.00
91	CPVC 3225RC	32 x 25	1 1/4 x 1	10	230	45.50
92	CPVC 4015RC	40 x 15	1 1/2 x 1/2	10	100	56.50
93	CPVC 4020RC	40 x 20	1 1/2 x 3/4	10	100	60.00
94	CPVC 4025RC	40 x 25	1 1/2 x 1	10	100	65.00
95	CPVC 4032RC	40 x 32	1 1/2 x 1 1/4	10	120	72.00
96	CPVC 5015RC	50 x 15	2 x 1/2	5	50	116.00
97	CPVC 5020RC	50 x 20	2 x 3/4	5	50	118.00
98	CPVC 5025RC	50 x 25	2 x 1	5	50	124.50
99	CPVC 5032RC	50 x 32	2 x 1 1/4	5	50	130.00
100	CPVC 5040RC	50 x 40	2 x 1 1/2	5	100	141.50



REDUCER ELBOW

SR. NO.	PRODUCT CODE	STANDARD SIZE		STD. PACK		RATE (pc)
		(mm)	(inch)	Pc./Bag	Pc./Ctn.	
116	CPVC 2015RE	20 x 15	3/4 x 1/2	10	250	24.00
117	CPVC 2520RE	25 x 20	1 x 3/4	10	250	46.00



REDUCER MTA

SR. NO.	PRODUCT CODE	STANDARD SIZE		STD. PACK		RATE (pc)
		(mm)	(inch)	Pc./Bag	Pc./Ctn.	
118	CPVC 2015RM	20 x 15	3/4 x 1/2	100	400	19.00
119	CPVC 2515RM	25 x 15	1 x 1/2	50	250	28.00
120	CPVC 2520RM	25 x 20	1 x 3/4	50	250	29.00

CPVC FITTINGS SDR 11 ASTM D 2846

HSN : 39174000



REDUCER BUSHING

SR. NO.	PRODUCT CODE	STANDARD SIZE		STD. PACK		RATE (pc)
		(mm)	(inch)	Pc./Bag	Pc./Ctn.	
121	CPVC 2015RB	20 x 15	3/4 x 1/2	50	1200	8.00
122	CPVC 2515RB	25 x 15	1 x 1/2	50	450	19.50
123	CPVC 2520RB	25 x 20	1 x 3/4	50	800	16.00
124	CPVC 3215RB	32 x 15	1 1/4 x 1/2	25	250	33.50
125	CPVC 3220RB	32 x 20	1 1/4 x 3/4	25	400	35.50
126	CPVC 3225RB	32 x 25	1 1/4 x 1	25	400	25.00
127	CPVC 4015RB	40 x 15	1 1/2 x 1/2	10	250	53.50
128	CPVC 4020RB	40 x 20	1 1/2 x 3/4	10	250	54.50
129	CPVC 4025RB	40 x 25	1 1/2 x 1	10	250	53.50
130	CPVC 4032RB	40 x 32	1 1/2 x 1 1/4	10	250	35.00
131	CPVC 5015RB	50 x 15	2 x 1/2	10	60	103.50
132	CPVC 5020RB	50 x 20	2 x 3/4	10	60	107.00
133	CPVC 5025RB	50 x 25	2 x 1	10	60	109.50
134	CPVC 5032RB	50 x 32	2 x 1 1/4	10	60	120.00
135	CPVC 5040RB	50 x 40	2 x 1 1/2	10	60	98.00



CROSS TEE

SR. NO.	PRODUCT CODE	STANDARD SIZE		STD. PACK		RATE (pc)
		(mm)	(inch)	Pc./Bag	Pc./Ctn.	
148	CPVC 15CT	15	1/2	25	300	23.00
149	CPVC 20CT	20	3/4	10	120	41.50
150	CPVC 25CT	25	1	5	60	79.00
151	CPVC 32CT	32	1 1/4	2	60	155.50
152	CPVC 40CT	40	1 1/2	2	30	260.00
153	CPVC 50CT	50	2	2	20	474.50



STEP OVER BEND

SR. NO.	PRODUCT CODE	STANDARD SIZE		STD. PACK		RATE (pc)
		(mm)	(inch)	Pc./Bag	Pc./Ctn.	
154	CPVC 15SB	15	1/2	10	120	64.50
155	CPVC 20SB	20	3/4	10	60	93.00
156	CPVC 25SB	25	1	5	30	179.00



TRANSITION BUSHING

SR. NO.	PRODUCT CODE	STANDARD SIZE		STD. PACK		RATE (pc)
		(mm)	(inch)	Pc./Bag	Pc./Ctn.	
136	CPVC 15TB	15 x 15	1/2 x 1/2	100	1200	7.50
137	CPVC 20TB	20 x 20	3/4 x 3/4	50	500	10.50
138	CPVC 25TB	25 x 25	1 x 1	25	300	16.50
139	CPVC 32TB	32 x 32	1 1/4 x 1 1/4	15	150	34.00
140	CPVC 40TB	40 x 40	1 1/2 x 1 1/2	10	100	43.50
141	CPVC 50TB	50 x 50	2 x 2	10	60	57.00



ELBOW

SR. NO.	PRODUCT CODE	STANDARD SIZE		STD. PACK		RATE (pc)
		(mm)	(inch)	Pc./Bag	Pc./Ctn.	
157	CPVC 15BE	15 x 15	1/2 x 1/2	25	250	73.00
158	CPVC 20BE	20 x 20	3/4 x 3/4	15	150	107.50
159	CPVC 25BE	25 x 25	1 x 1	10	80	221.50

(BRASS)



UNION

SR. NO.	PRODUCT CODE	STANDARD SIZE		STD. PACK		RATE (pc)
		(mm)	(inch)	Pc./Bag	Pc./Ctn.	
142	CPVC 15U	15	1/2	25	250	42.00
143	CPVC 20U	20	3/4	10	140	65.00
144	CPVC 25U	25	1	5	75	107.00
145	CPVC 32U	32	1 1/4	5	50	148.50
146	CPVC 40U	40	1 1/2	5	30	240.50
147	CPVC 50U	50	2	2	16	435.00



ELBOW

SR. NO.	PRODUCT CODE	STANDARD SIZE		STD. PACK		RATE (pc)
		(mm)	(inch)	Pc./Bag	Pc./Ctn.	
160	CPVC 15BEW	15 x 15	1/2 x 1/2	25	200	77.50
161	CPVC 20BEW	20 x 20	3/4 x 3/4	10	100	106.00
162	CPVC 25BEW	25 x 25	1 x 1	5	60	222.00

(BRASS)

WALL MOUNTING

CPVC FITTINGS SDR 11 ASTM D 2846

HSN : 39174000



TEE

SR. NO.	PRODUCT CODE	STANDARD SIZE		STD. PACK		RATE (pc)
		(mm)	(inch)	Pc./Bag	Pc./Ctn.	
163	CPVC 15BT	15x15x15	1/2x1/2x1/2	25	250	77.50
164	CPVC 20BT	20x20x20	3/4x3/4x3/4	25	125	117.00
165	CPVC 25BT	25x25x25	1x1x1	5	60	217.00

(BRASS)

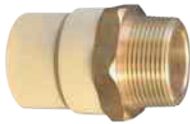


R - ELBOW

SR. NO.	PRODUCT CODE	STANDARD SIZE		STD. PACK		RATE (pc)
		(mm)	(inch)	Pc./Bag	Pc./Ctn.	
181	CPVC 2015RBEW	20 x 15	3/4 x 1/2	15	150	102.50

(BRASS)

WALL MOUNTING



MTA

SR. NO.	PRODUCT CODE	STANDARD SIZE		STD. PACK		RATE (pc)
		(mm)	(inch)	Pc./Bag	Pc./Ctn.	
166	CPVC 15BM	15	1/2	25	300	141.00
167	CPVC 20BM	20	3/4	20	200	163.00
168	CPVC 25BM	25	1	10	100	304.00
169	CPVC 32BM	32	1 1/4	5	60	624.50
170	CPVC 40BM	40	1 1/2	5	40	824.00
171	CPVC 50BM	50	2	2	20	1485.00

(BRASS)



R - TEE

SR. NO.	PRODUCT CODE	STANDARD SIZE		STD. PACK		RATE (pc)
		(mm)	(inch)	Pc./Bag	Pc./Ctn.	
182	CPVC 2015RBT	20 x 15	3/4 x 1/2	25	125	96.50
183	CPVC 2515RBT	25 x 15	1 x 1/2	10	80	137.00
184	CPVC 2520RBT	25 x 20	1 x 3/4	10	80	150.50

(BRASS)



FTA

SR. NO.	PRODUCT CODE	STANDARD SIZE		STD. PACK		RATE (pc)
		(mm)	(inch)	Pc./Bag	Pc./Ctn.	
172	CPVC 15BF	15	1/2	25	300	131.00
173	CPVC 20BF	20	3/4	20	200	165.00
174	CPVC 25BF	25	1	10	100	374.00
175	CPVC 32BF	32	1 1/4	5	60	628.50
176	CPVC 40BF	40	1 1/2	5	50	788.00
177	CPVC 50BF	50	2	2	20	1198.00

(BRASS)



R - MTA

SR. NO.	PRODUCT CODE	STANDARD SIZE		STD. PACK		RATE (pc)
		(mm)	(inch)	Pc./Bag	Pc./Ctn.	
185	CPVC 1520RBM	15 x 20	1/2 x 3/4	25	250	118.00
186	CPVC 2015RBM	20 x 15	3/4 x 1/2	25	250	136.50
187	CPVC 2515RBM	25 x 15	1 x 1/2	20	200	112.00
188	CPVC 2520RBM	25 x 20	1 x 3/4	20	200	127.00

(BRASS)



R - ELBOW

SR. NO.	PRODUCT CODE	STANDARD SIZE		STD. PACK		RATE (pc)
		(mm)	(inch)	Pc./Bag	Pc./Ctn.	
178	CPVC 2015RBE	20 x 15	3/4 x 1/2	25	200	75.50
179	CPVC 2515RBE	25 x 15	1 x 1/2	25	125	112.00
180	CPVC 2520RBE	25 x 20	1 x 3/4	10	120	135.50

(BRASS)



R - FTA

SR. NO.	PRODUCT CODE	STANDARD SIZE		STD. PACK		RATE (pc)
		(mm)	(inch)	Pc./Bag	Pc./Ctn.	
189	CPVC 1520RBF	15 x 20	1/2 x 3/4	25	250	86.50
190	CPVC 2015RBF	20 x 15	3/4 x 1/2	25	250	79.00
191	CPVC 2515RBF	25 x 15	1 x 1/2	10	160	97.50
192	CPVC 2520RBF	25 x 20	1 x 3/4	10	160	101.50

(BRASS)

CPVC FITTINGS SDR 11 ASTM D 2846

HSN : 39174000



TANK NIPPLE

SR. NO.	PRODUCT CODE	STANDARD SIZE		STD. PACK		RATE (pc)
		(mm)	(inch)	Pc./Bag	Pc./Ctn.	
193	CPVC 15TN	15	½	25	150	61.00
194	CPVC 20TN	20	¾	25	200	64.50
195	CPVC 25TN	25	1	10	100	98.50
196	CPVC 32TN	32	1¼	5	60	155.00
197	CPVC 40TN	40	1½	5	40	222.50
198	CPVC 50TN	50	2	5	35	346.50



VAN STONE FLANGE

SR. NO.	PRODUCT CODE	STANDARD SIZE		STD. PACK		RATE (pc)
		(mm)	(inch)	Pc./Bag	Pc./Ctn.	
208	CPVC 65VF	65	2½	2	-	1,142.00
209	CPVC 80VF	80	3	2	-	1,269.00
210	CPVC 100VF	100	4	2	-	2,177.00



POWDER COATED METAL STRAP

SR. NO.	PRODUCT CODE	STANDARD SIZE		STD. PACK		RATE (pc)
		(mm)	(inch)	Pc./Bag	Pc./Ctn.	
211	CPVC 15MS	15	½	10	500	10.50
212	CPVC 20MS	20	¾	10	500	11.50
213	CPVC 25MS	25	1	10	500	12.00
214	CPVC 32MS	32	1¼	10	300	13.00
215	CPVC 40MS	40	1½	10	200	14.00
216	CPVC 50MS	50	2	10	200	15.50

HSN: 73072900



END PLUG

SR. NO.	PRODUCT CODE	STANDARD SIZE		STD. PACK		RATE (pc)
		(mm)	(inch)	Pc./Bag	Pc./Ctn.	
199	CPVC 15EP	15	½	100	-	8.50



BALL VALVE

SR. NO.	PRODUCT CODE	STANDARD SIZE		STD. PACK		RATE (pc)
		(mm)	(inch)	Pc./Bag	Pc./Ctn.	
200	CPVC 15BVI	15	½	20	100	109.50
201	CPVC 20BVI	20	¾	15	75	168.50
202	CPVC 25BVI	25	1	10	50	242.00
203	CPVC 32BVI	32	1¼	5	25	443.00
204	CPVC 40BVI	40	1½	4	20	811.50
205	CPVC 50BVI	50	2	2	12	1209.50
206	CPVC 65BVI	65	2½	1	-	4659.00
207	CPVC 80BVI	80	3	1	-	8109.00

HSN: 84818090



CPVC SOLVENT CEMENT

SR. NO.	PRODUCT CODE	STANDARD SIZE	STD. PACK		RATE (pc)
		(ml)	Pc./Box	Pc./Ctn.	
217	CPVC SL59	59	30	240	127.00
218	CPVC SL118	118	24	144	220.00
219	CPVC SL237	237	24	96	346.50
220	CPVC SL473	473	12	48	650.00

(TIN PACKING)

HSN: 35061000



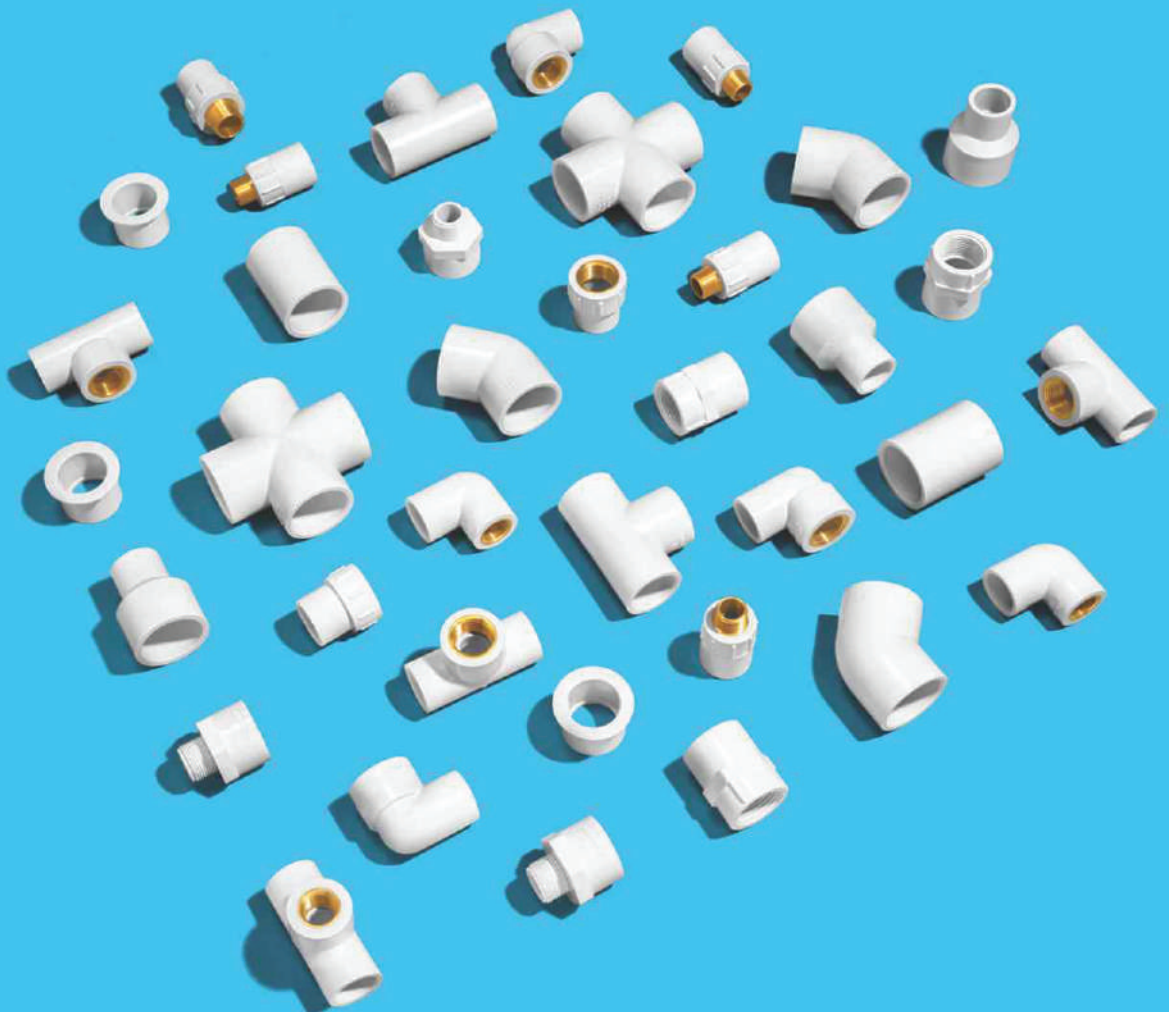
PRECISION[®]

Pipes | Desh ki Lifeline



ASTM (uPVC) PIPES & FITTINGS

Precision ASTM (uPVC) Pipes and Fittings are manufactured from a specially formulated unplasticised polyvinyl chloride compound. These pipes and fittings are tough and durable with high tensile and impact strength and are manufactured in accordance to ASTM (uPVC) D1785 –SCH 40 & SCH 80 and Fittings to ASTM (uPVC) D 2476 – SCH 80





APPLICATIONS

Channelising potable water supply in homes, apartments, hotels, commercial complex and hospitals.

FEATURES



Various Diameters & Grades



Fire retardant & corrosion free



Easy & quick installation



Chemical resistant



UV stabilized

- Time tested operational life of 50 years.
- Economical, maintenance free.
- Heat efficient and lower Installation cost.
- Low thermal expansion.
- Hygienic and environment friendly.
- Services temperature upto 60°C.

COLOUR:



ASTM (uPVC) D 1785 / SCH 40 PIPES

Nominal Size		Nominal OD mm	Wall Thickness		Pressure Rating at 23°C kg/cm ²
Inch	mm		Min	Max	
1/2	15	21.24	2.77	3.28	41.4
3/4	20	26.57	2.87	3.38	33.1
1	25	33.27	3.38	3.89	31.0
1 1/4	32	42.03	3.56	4.07	25.5
1 1/2	40	48.11	3.68	4.19	22.8
2	50	60.17	3.91	4.42	19.3
2 1/2	65	73.02	5.16	5.77	21.10
3	80	88.9	5.49	6.17	18.28
4	100	114.3	6.02	6.73	15.47

ASTM (uPVC) D 1785 / SCH 80 PIPES

Nominal Size		Nominal OD mm	Wall Thickness		Pressure Rating at 23°C kg/cm ²
Inch	mm		Min	Max	
1/2	15	21.24	3.73	4.24	58.6
3/4	20	26.57	3.91	4.42	47.6
1	25	33.27	4.55	5.08	43.4
1 1/4	32	42.03	4.85	5.43	35.9
1 1/2	40	48.11	5.08	5.69	32.4
2	50	60.17	5.54	6.20	27.6
2 1/2	65	73.02	7.01	7.85	29.54
3	80	88.9	7.62	8.53	26.02
4	100	114.3	8.56	9.58	22.50

MINIMUM DIMENSIONS FROM CENTER TO END OF SOCKET (LAYING LENGTH)

uPVC SCH 80 Pipe Fittings

inch	mm	inch	mm	inch	mm	inch	mm
½	15	½	12.70	½	6.35	3/32	2.38
¾	20	9/16	14.29	5/16	7.94	3/32	2.38
1	25	11/16	17.46	5/16	7.94	3/32	2.38
1¼	32	7/8	22.22	1/8	9.53	3/32	2.38
1½	40	1	25.40	7/16	11.11	3/32	2.38
2	50	1¼	31.75	5/8	15.88	3/32	2.38

DIMENSIONS FOR TAPERED SOCKET OF uPVC SCH 80 PIPES FITTINGS

Nom Size	Socket Entrance				Socket Bottom				Socket Entrance		ID		Wall Thickness				Entrance	
	Diameter inch/mm				Diameter inch/mm				inch	mm	inch	mm	Socket		Socket Bottom		F	F
Inch	Dia	Dia	A Tole	A Tole	B Aver	B Aver	B Tole	B Tole	C min	C min	D min	D min	EA min	EA min	EB min	EB min	F	F
½	0.848	21.54	0.004	0.10	0.836	21.23	0.004	0.10	0.875	22.22	0.502	12.75	0.147	3.73	0.185	4.70	0.03	0.79
¾	1.058	26.87	0.004	0.10	1.046	26.57	0.004	0.10	1.000	25.40	0.698	17.73	0.154	3.91	0.195	4.95	0.03	0.79
1	1.325	33.65	0.005	0.13	1.310	33.27	0.005	0.13	1.125	28.58	0.911	23.14	0.179	4.55	0.225	5.72	0.06	1.59
1¼	1.670	42.42	0.005	0.13	1.655	42.04	0.005	0.13	1.250	31.75	1.227	31.17	0.191	4.85	0.239	6.07	0.06	1.59
1½	1.912	48.56	0.006	0.15	1.894	48.11	0.006	0.15	1.375	34.93	1.446	36.73	0.200	5.08	0.250	6.35	0.06	1.59
2	2.387	60.63	0.006	0.15	2.369	60.17	0.006	0.15	1.500	38.10	1.881	47.78	0.218	5.54	0.275	6.99	0.06	1.59
2 ½	2.889	73.38	0.007	0.18	2.868	72.85	0.007	0.18	1.75	44.45	2.25	57.15	0.276	7.01	0.345	8.76	0.9	2.3
3	3.516	89.31	0.008	0.20	3.492	88.70	0.008	0.20	1.875	47.63	2.82	71.63	0.3	7.62	0.375	9.53	0.9	2.3
4	4.518	114.76	0.009	0.23	4.491	114.07	0.009	0.23	2.25	57.15	3.737	94.92	0.337	8.56	0.42	10.67	0.9	2.3

ASTM (uPVC) D 1785 PIPES

HSN: 39172390

SR. NO.	PRODUCT CODE	NOMINAL SIZE (mm)	(inch)	STD.PACK (pcs.)	RATE (mtr)	RATE 3mtr/pc
ASTM (uPVC) D 1785 / SCH 40 PIPES Length:3 mtr						
221	ASTM 4015/3	15	½	50	59.00	177.00
222	ASTM 4020/3	20	¾	40	82.00	246.00
223	ASTM 4025/3	25	1	30	116.00	348.00
224	ASTM 4032/3	32	1¼	20	162.00	486.00
225	ASTM 4040/3	40	1½	15	186.00	558.00
226	ASTM 4050/3	50	2	10	252.00	756.00
227	ASTM 4065/3	65	2½	5	409.00	1227.00
228	ASTM 4080/3	80	3	3	539.00	1617.00
229	ASTM 40100/3	100	4	2	766.00	2298.00

SR. NO.	PRODUCT CODE	NOMINAL SIZE (mm)	(inch)	STD.PACK (pcs.)	RATE (mtr)	RATE 3mtr/pc
ASTM (uPVC) D 1785 / SCH 80 PIPES Length:3 mtr						
230	ASTM 8015/3	15	½	50	73.00	219.00
231	ASTM 8020/3	20	¾	40	100.00	300.00
232	ASTM 8025/3	25	1	30	145.00	435.00
233	ASTM 8032/3	32	1¼	20	202.00	606.00
234	ASTM 8040/3	40	1½	15	254.00	762.00
235	ASTM 8050/3	50	2	10	359.00	1077.00
236	ASTM 8065/3	65	2½	5	559.00	1677.00
237	ASTM 8080/3	80	3	3	747.00	2241.00
238	ASTM 80100/3	100	4	2	1094.00	3282.00

SR. NO.	PRODUCT CODE	NOMINAL SIZE (mm)	(inch)	STD.PACK (pcs.)	RATE (mtr)	RATE 6mtr/pc
ASTM (uPVC) D 1785 / SCH 40 PIPES Length:6 mtr						
239	ASTM 4015/6	15	½	30	59.00	354.00
240	ASTM 4020/6	20	¾	25	82.00	492.00
241	ASTM 4025/6	25	1	20	116.00	696.00
242	ASTM 4032/6	32	1¼	10	162.00	972.00
243	ASTM 4040/6	40	1½	10	186.00	1116.00
244	ASTM 4050/6	50	2	5	252.00	1512.00
245	ASTM 4065/6	65	2½	5	409.00	2454.00
246	ASTM 4080/6	80	3	3	539.00	3234.00
247	ASTM 40100/6	100	4	2	766.00	4596.00

SR. NO.	PRODUCT CODE	NOMINAL SIZE (mm)	(inch)	STD.PACK (pcs.)	RATE (mtr)	RATE 6mtr/pc
ASTM (uPVC) D 1785 / SCH 80 PIPES Length:6 mtr						
248	ASTM 8015/6	15	½	30	73.00	438.00
249	ASTM 8020/6	20	¾	25	100.00	600.00
250	ASTM 8025/6	25	1	20	145.00	870.00
251	ASTM 8032/6	32	1¼	10	202.00	1212.00
252	ASTM 8040/6	40	1½	10	254.00	1524.00
253	ASTM 8050/6	50	2	5	359.00	2154.00
254	ASTM 8065/6	65	2½	5	559.00	3354.00
255	ASTM 8080/6	80	3	3	747.00	4482.00
256	ASTM 80100/6	100	4	2	1094.00	6564.00

SCH 40 - Blue Stripe

SCH 80 - Red Stripe

ASTM (uPVC) D 2467 / SCH 80 FITTINGS

HSN : 39174000



COUPLER

SR. NO.	PRODUCT CODE	STANDARD SIZE		STD. PACK		RATE (pc)
		(mm)	(inch)	Pc./Bag	Pc./Ctn.	
257	ASTM 15C	15	1/2	50	550	10.00
258	ASTM 20C	20	3/4	50	350	13.50
259	ASTM 25C	25	1	25	200	23.00
260	ASTM 32C	32	1 1/4	10	100	32.50
261	ASTM 40C	40	1 1/2	10	100	42.00
262	ASTM 50C	50	2	5	60	62.00



ELBOW 45°

SR. NO.	PRODUCT CODE	STANDARD SIZE		STD. PACK		RATE (pc)
		(mm)	(inch)	Pc./Bag	Pc./Ctn.	
275	ASTM 1545E	15	1/2	25	500	12.50
276	ASTM 2045E	20	3/4	25	300	18.50
277	ASTM 2545E	25	1	25	150	30.00
278	ASTM 3245E	32	1 1/4	10	100	42.50
279	ASTM 4045E	40	1 1/2	10	80	54.00
280	ASTM 5045E	50	2	5	45	88.00



ELBOW

SR. NO.	PRODUCT CODE	STANDARD SIZE		STD. PACK		RATE (pc)
		(mm)	(inch)	Pc./Bag	Pc./Ctn.	
263	ASTM 15E	15	1/2	50	400	14.50
264	ASTM 20E	20	3/4	50	250	21.50
265	ASTM 25E	25	1	25	150	35.50
266	ASTM 32E	32	1 1/4	10	80	53.00
267	ASTM 40E	40	1 1/2	10	50	71.00
268	ASTM 50E	50	2	5	35	102.00



MALE THREAD ADAPTOR

SR. NO.	PRODUCT CODE	STANDARD SIZE		STD. PACK		RATE (pc)
		(mm)	(inch)	Pc./Bag	Pc./Ctn.	
281	ASTM 15M	15	1/2	50	850	7.50
282	ASTM 20M	20	3/4	25	750	11.00
283	ASTM 25M	25	1	25	300	18.50
284	ASTM 32M	32	1 1/4	10	240	29.00
285	ASTM 40M	40	1 1/2	10	160	35.50
286	ASTM 50M	50	2	5	100	52.00



TEE

SR. NO.	PRODUCT CODE	STANDARD SIZE		STD. PACK		RATE (pc)
		(mm)	(inch)	Pc./Bag	Pc./Ctn.	
269	ASTM 15T	15	1/2	50	250	19.50
270	ASTM 20T	20	3/4	25	175	28.50
271	ASTM 25T	25	1	20	100	44.00
272	ASTM 32T	32	1 1/4	10	50	70.00
273	ASTM 40T	40	1 1/2	5	40	90.50
274	ASTM 50T	50	2	2	24	137.00



FAMALE THREAD ADAPTOR

SR. NO.	PRODUCT CODE	STANDARD SIZE		STD. PACK		RATE (pc)
		(mm)	(inch)	Pc./Bag	Pc./Ctn.	
287	ASTM 15F	15	1/2	25	625	10.00
288	ASTM 20F	20	3/4	10	400	14.00
289	ASTM 25F	25	1	10	280	22.50
290	ASTM 32F	32	1 1/4	5	140	32.50
291	ASTM 40F	40	1 1/2	10	100	42.00
292	ASTM 50F	50	2	5	70	60.00

ASTM (uPVC) D 2467 / SCH 80 FITTINGS

HSN : 39174000



REDUCER COUPLER

SR. NO.	PRODUCT CODE	STANDARD SIZE		STD. PACK		RATE (pc)
		(mm)	(inch)	Pc./Bag	Pc./Ctn.	
293	ASTM 2015RC	20 x 15	¾ x ½	25	400	13.50
294	ASTM 2515RC	25 x 15	1 x ½	25	250	21.00
295	ASTM 2520RC	25 x 20	1 x ¾	25	225	21.00
296	ASTM 3215RC	32 x 15	1¼ x ½	25	150	25.50
297	ASTM 3220RC	32 x 20	1¼ x ¾	25	150	28.00
298	ASTM 3225RC	32 x 25	1¼ x 1	25	125	31.50
299	ASTM 4015RC	40 x 15	1½ x ½	10	120	33.00
300	ASTM 4020RC	40 x 20	1½ x ¾	10	120	34.00
301	ASTM 4025RC	40 x 25	1½ x 1	10	100	37.00
302	ASTM 4032RC	40 x 32	1½ x 1¼	10	100	42.00
303	ASTM 5015RC	50 x 15	2 x ½	10	70	53.50
304	ASTM 5020RC	50 x 20	2 x ¾	10	70	56.00
305	ASTM 5025RC	50 x 25	2 x 1	10	70	57.50
306	ASTM 5032RC	50 x 32	2 x 1¼	10	70	58.50
307	ASTM 5040RC	50 x 40	2 x 1½	5	70	66.00



REDUCER TEE

SR. NO.	PRODUCT CODE	STANDARD SIZE		STD. PACK		RATE (pc)
		(mm)	(inch)	Pc./Bag	Pc./Ctn.	
316	ASTM 2015RT	20x20x15	¾ x ¾ x ½	25	175	26.50
317	ASTM 2515RT	25x25x15	1 x 1 x ½	25	100	40.50
318	ASTM 2520RT	25x25x20	1 x 1 x ¾	25	100	41.50
319	ASTM 3215RT	32x32x15	1¼ x 1¼ x ½	10	70	56.50
320	ASTM 3220RT	32x32x20	1¼ x 1¼ x ¾	10	70	58.00
321	ASTM 3225RT	32x32x25	1¼ x 1¼ x 1	10	60	62.50
322	ASTM 4015RT	40x40x15	1½ x 1½ x ½	5	20	77.50
323	ASTM 4020RT	40x40x20	1½ x 1½ x ¾	5	20	79.00
324	ASTM 4025RT	40x40x25	1½ x 1½ x 1	5	20	84.00
325	ASTM 4032RT	40x40x32	1½ x 1½ x 1¼	5	20	88.00
326	ASTM 5015RT	50x50x15	2 x 2 x ½	5	10	111.00
327	ASTM 5020RT	50x50x20	2 x 2 x ¾	5	10	113.00
328	ASTM 5025RT	50x50x25	2 x 2 x 1	5	10	117.00
329	ASTM 5032RT	50x50x32	2 x 2 x 1¼	5	10	121.00
330	ASTM 5040RT	50x50x40	2 x 2 x 1½	5	10	125.00



END CAP

SR. NO.	PRODUCT CODE	STANDARD SIZE		STD. PACK		RATE (pc)
		(mm)	(inch)	Pc./Bag	Pc./Ctn.	
308	ASTM 15EC	15	½	25	1000	7.00
309	ASTM 20EC	20	¾	25	700	10.00
310	ASTM 25EC	25	1	25	375	16.00
311	ASTM 32EC	32	1¼	10	250	23.00
312	ASTM 40EC	40	1½	10	200	31.50
313	ASTM 50EC	50	2	5	100	47.50
314	ASTM 65EC	65	2½	10	-	83.00
315	ASTM 80EC	80	3	10	-	118.50



REDUCER BUSHING

SR. NO.	PRODUCT CODE	STANDARD SIZE		STD. PACK		RATE (pc)
		(mm)	(inch)	Pc./Bag	Pc./Ctn.	
331	ASTM 2015RB	20 x 15	¾ x ½	50	1000	4.00
332	ASTM 2515RB	25 x 15	1 x ½	25	600	11.00
333	ASTM 2520RB	25 x 20	1 x ¾	50	600	8.00
334	ASTM 3225RB	32 x 25	1¼ x 1	25	300	13.50
335	ASTM 4015RB	40 x 15	1½ x ½	10	250	29.00
336	ASTM 4020RB	40 x 20	1½ x ¾	10	250	30.00
337	ASTM 4025RB	40 x 25	1½ x 1	10	250	24.50
338	ASTM 4032RB	40 x 32	1½ x 1¼	10	250	15.50
339	ASTM 5015RB	50 x 15	2 x ½	10	120	41.00
340	ASTM 5020RB	50 x 20	2 x ¾	10	120	43.50
341	ASTM 5025RB	50 x 25	2 x 1	10	120	48.50
342	ASTM 5032RB	50 x 32	2 x 1¼	10	120	44.00
343	ASTM 5040RB	50 x 40	2 x 1½	10	120	33.50

ASTM (uPVC) D 2467 / SCH 80 FITTINGS

HSN : 39174000



REDUCER ELBOW

SR. NO.	PRODUCT CODE	STANDARD SIZE		STD. PACK		RATE (pc)
		(mm)	(inch)	Pc./Bag	Pc./Ctn.	
344	ASTM 2015RE	20 x 15	¾ x ½	25	250	21.00
345	ASTM 2515RE	25 x 15	1 x ½	25	200	30.50
346	ASTM 2520RE	25 x 20	1 x ¾	25	150	32.50



CROSS TEE

SR. NO.	PRODUCT CODE	STANDARD SIZE		STD. PACK		RATE (pc)
		(mm)	(inch)	Pc./Bag	Pc./Ctn.	
356	ASTM 15CT	15	½	25	200	23.00
357	ASTM 20CT	20	¾	10	120	31.00
358	ASTM 25CT	25	1	10	80	52.00
359	ASTM 32CT	32	1¼	5	45	77.50
360	ASTM 40CT	40	1½	5	30	102.00
361	ASTM 50CT	50	2	2	20	156.00



REDUCER MTA

SR. NO.	PRODUCT CODE	STANDARD SIZE		STD. PACK		RATE (pc)
		(mm)	(inch)	Pc./Bag	Pc./Ctn.	
347	ASTM 2015RM	20 x 15	¾ x ½	10	600	10.50
348	ASTM 2515RM	25 x 15	1 x ½	15	420	17.50
349	ASTM 2520RM	25 x 20	1 x ¾	15	420	17.50



STEP OVER BEND

SR. NO.	PRODUCT CODE	STANDARD SIZE		STD. PACK		RATE (pc)
		(mm)	(inch)	Pc./Bag	Pc./Ctn.	
362	ASTM 15SB	15	½	5	75	34.00
363	ASTM 20SB	20	¾	10	40	57.50
364	ASTM 25SB	25	1	5	25	102.00



ELBOW

SR. NO.	PRODUCT CODE	STANDARD SIZE		STD. PACK		RATE (pc)
		(mm)	(inch)	Pc./Bag	Pc./Ctn.	
365	ASTM 15BE	15 x 15	½ x ½	20	160	91.00
366	ASTM 20BE	20 x 20	¾ x ¾	20	80	140.00
367	ASTM 25BE	25 x 25	1 x 1	10	40	265.00

(BRASS)



UNION

SR. NO.	PRODUCT CODE	STANDARD SIZE		STD. PACK		RATE (pc)
		(mm)	(inch)	Pc./Bag	Pc./Ctn.	
350	ASTM 15U	15	½	10	250	29.00
351	ASTM 20U	20	¾	10	150	40.50
352	ASTM 25U	25	1	5	100	58.50
353	ASTM 32U	32	1¼	5	60	79.00
354	ASTM 40U	40	1½	5	50	108.00
355	ASTM 50U	50	2	5	25	161.00



TEE

SR. NO.	PRODUCT CODE	STANDARD SIZE		STD. PACK		RATE (pc)
		(mm)	(inch)	Pc./Bag	Pc./Ctn.	
368	ASTM 15BT	15x15x15	½ x ½ x ½	25	100	102.00
369	ASTM 20BT	20x20x20	¾ x ¾ x ¾	5	65	149.00
370	ASTM 25BT	25x25x25	1 x 1 x 1	10	40	280.00

(BRASS)

ASTM (uPVC) D 2467 / SCH 80 FITTINGS

HSN : 39174000



MTA

SR. NO.	PRODUCT CODE	STANDARD SIZE		STD. PACK		RATE (pc)
		(mm)	(inch)	Pc./Bag	Pc./Ctn.	
371	ASTM 15BM	15	1/2	10	180	110.00
372	ASTM 20BM	20	3/4	10	120	163.50
373	ASTM 25BM	25	1	5	75	230.00
374	ASTM 32BM	32	1 1/4	5	50	414.00
375	ASTM 40BM	40	1 1/2	5	40	407.50
376	ASTM 50BM	50	2	2	24	717.00

(BRASS)



R-TEE

SR. NO.	PRODUCT CODE	STANDARD SIZE		STD. PACK		RATE (pc)
		(mm)	(inch)	Pc./Bag	Pc./Ctn.	
386	ASTM 2015RBT	20x20x15	3/4x3/4x1/2	10	70	129.00
387	ASTM 2515RBT	25x25x15	1x1x1/2	10	40	158.00
388	ASTM 2520RBT	25x25x20	1x1x3/4	10	40	184.00

(BRASS)



FTA

SR. NO.	PRODUCT CODE	STANDARD SIZE		STD. PACK		RATE (pc)
		(mm)	(inch)	Pc./Bag	Pc./Ctn.	
377	ASTM 15BF	15	1/2	10	200	75.00
378	ASTM 20BF	20	3/4	15	150	102.00
379	ASTM 25BF	25	1	5	75	220.00
380	ASTM 32BF	32	1 1/4	5	40	250.00
381	ASTM 40BF	40	1 1/2	4	32	477.00
382	ASTM 50BF	50	2	2	24	667.00

(BRASS)



R - MTA

SR. NO.	PRODUCT CODE	STANDARD SIZE		STD. PACK		RATE (pc)
		(mm)	(inch)	Pc./Bag	Pc./Ctn.	
389	ASTM 2015RBM	20 x 15	3/4 x 1/2	10	150	112.00
390	ASTM 2520RBM	25 x 20	1 x 3/4	10	100	178.00

(BRASS)



R - FTA

SR. NO.	PRODUCT CODE	STANDARD SIZE		STD. PACK		RATE (pc)
		(mm)	(inch)	Pc./Bag	Pc./Ctn.	
391	ASTM 1520RBF	15 x 20	1/2 x 3/4	10	160	100.00
392	ASTM 2015RBF	20 x 15	3/4 x 1/2	10	180	80.00
393	ASTM 2515RBF	25 x 15	1 x 1/2	10	140	95.00
394	ASTM 2520RBF	25 x 20	1 x 3/4	10	120	108.00

(BRASS)



R - ELBOW

SR. NO.	PRODUCT CODE	STANDARD SIZE		STD. PACK		RATE (pc)
		(mm)	(inch)	Pc./Bag	Pc./Ctn.	
383	ASTM 2015RBE	20 x 15	3/4 x 1/2	25	100	108.00
384	ASTM 2515RBE	25 x 15	1 x 1/2	25	75	127.00
385	ASTM 2520RBE	25 x 20	1 x 3/4	5	65	172.00

(BRASS)



TANK NIPPLE

SR. NO.	PRODUCT CODE	STANDARD SIZE		STD. PACK		RATE (pc)
		(mm)	(inch)	Pc./Bag	Pc./Ctn.	
395	ASTM 15TN	15	1/2	10	250	31.50
396	ASTM 20TN	20	3/4	10	240	56.50
397	ASTM 25TN	25	1	10	120	66.00
398	ASTM 32TN	32	1 1/4	10	80	107.00
399	ASTM 40TN	40	1 1/2	10	60	120.00
400	ASTM 50TN	50	2	10	40	127.00

ASTM (uPVC) D 2467 / SCH 80 FITTINGS

HSN : 39174000



BALL VALVE

SR& NO	PRODUCT CODE	STANDARD SIZE		STD. PACK		RATE (pc)
		(mm)	(inch)	Pc/Bag	Pc/Ctn	
401	ASTM 15BVI	15	1/2	15	90	84.00
402	ASTM 20BVI	20	3/4	10	70	111.00
403	ASTM 25BVI	25	1	8	40	161.00
404	ASTM 32BVI	32	1 1/4	5	30	219.00
405	ASTM 40BVI	40	1 1/2	4	20	313.50
406	ASTM 50BVI	50	2	2	16	475.50
407	ASTM 65BVI	65	2 1/2	1	-	2361.00
408	ASTM 80BVI	80	3	1	-	4479.00

HSN: 84818090



ASTM (uPVC) SOLVENT CEMENT

SR NO	PRODUCT CODE	STANDARD SIZE (ml)	STD. PACK		RATE (pc)
			Pc/Box	Pc/Ctn	
417	ASTM SL59	59	30	240	114.50
418	ASTM SL118	118	24	144	152.50
419	ASTM SL237	237	24	96	245.50
420	ASTM SL473	473	12	48	426.00

(TIN PACKING)

HSN: 35061000



VAN STONE FLANGE

SR NO	PRODUCT CODE	STANDARD SIZE		STD. PACK Pc/Bag	RATE (pc)
		(mm)	(inch)		
409	ASTM 65VF	65	2 1/2	2	282.00
410	ASTM 80VF	80	3	2	338.00



ASTM (uPVC) SOLVENT CEMENT

SR NO	PRODUCT CODE	STANDARD SIZE (ml)	STD. PACK		RATE (pc)
			Pc/Box	Pc/Ctn	
421	ASTM HD 118	118	24	144	174.00

(TIN PACKING) HD

HSN: 35061000



POWDER COATED METAL STRAP

SR NO	PRODUCT CODE	STANDARD SIZE		STD. PACK		RATE (pc)
		(mm)	(inch)	Pc/Bag	Pc/Ctn	
411	ASTM 15MS	15	1/2	10	500	11.00
412	ASTM 20MS	20	3/4	10	500	12.00
413	ASTM 25MS	25	1	10	500	13.00
414	ASTM 32MS	32	1 1/4	10	300	14.50
415	ASTM 40MS	40	1 1/2	10	200	15.00
416	ASTM 50MS	50	2	10	200	17.00

HSN: 73072900



PRECISION[®]

Pipes | Desh ki Lifeline



**SEWERAGE WASTE &
RAINWATER (SWR)
PIPES & FITTINGS**

Precision Sewerage Waste & Rainwater (SWR) Pipes and Fittings are manufactured from a specially formulated unplasticised polyvinyl chloride compound. These pipes and fittings are tough and durable with high tensile and impact strength, manufactured in accordance to IS:13592-2013 and fittings to IS 14735-1999. Rubber rings conforms to IS:5382-1985.





APPLICATIONS

Precision Sewerage Waste Rainwater (SWR) Pipes and Fittings are available with 'O' ring joint for quick, efficient and leak free waste discharge systems for homes, apartments, hotels, commercial complex and hospitals.

Type A: For rain water discharge as well as venting.

Type B: For soil and waste discharge.

FEATURES



High quality



Easy and quick installation



UV stabilized



Corrosion-free & chemical resistant



Easy flow due to smooth inner surface

- Time tested operational life of 50 years.
- Economical low maintenance.
- Hygienic and environment friendly.
- Easy access for cleaning and clearing obstructions.

COLOUR:



DIMENSIONS FOR SWR PIPES

Nominal Diameter	Mean Outside Diameter		Outside Diameter at any Point		Wall Thickness			
					Type A		Type B	
DN	Min	Max	Min	Max	Min	Max	Min	Max
75 mm	75.00	75.30	74.10	75.90	1.80	2.20	3.20	3.80
110 mm	110.00	110.40	108.60	111.40	2.20	2.70	3.20	3.80
160 mm	160.00	160.50	158.00	162.00	3.20	3.80	4.00	4.60



RING TYPE - SWR (SEWERAGE, WASTE & RAINWATER) PIPES

HSN: 39172390

SR. NO.	PRODUCT CODE	NORM. SIZE (mm)	STD. LENGTH (feet)	RATE (per pipe)
TYPE - A				
422	SWR 75A10SS	75	10	513.00
423	SWR 75A10DS	75	10	554.00
424	SWR 75A6SS	75	6	367.00
425	SWR 75A6DS	75	6	390.00
426	SWR 75A4DS	75	4	272.00
427	SWR 75A3DS	75	3	199.00
428	SWR 75A2DS	75	2	137.00
429	SWR 110A10SS	110	10	920.00
430	SWR 110A10DS	110	10	970.00
431	SWR 110A6SS	110	6	679.00
432	SWR 110A6DS	110	6	691.00
433	SWR 110A4DS	110	4	463.00
434	SWR 110A3DS	110	3	354.00
435	SWR 110A2DS	110	2	239.00
436	SWR 160A10SS	160	10	2045.00
437	SWR 160A10DS	160	10	2327.00
SEWERAGE PIPES (2.5 kgf/cm²)				
438	SEW 7510SS	75	10	384.00
439	SEW 11010SS	110	10	679.00

SR. NO.	PRODUCT CODE	NORM. SIZE (mm)	STD. LENGTH (feet)	RATE (per pipe)
TYPE - B				
440	SWR 75B10SS	75	10	906.00
441	SWR 75B10DS	75	10	929.00
442	SWR 75B6SS	75	6	578.00
443	SWR 75B6DS	75	6	610.00
444	SWR 75B4DS	75	4	413.00
445	SWR 75B3DS	75	3	331.00
446	SWR 75B2DS	75	2	223.00
447	SWR 110B10SS	110	10	1348.00
448	SWR 110B10DS	110	10	1387.00
449	SWR 110B6SS	110	6	957.00
450	SWR 110B6DS	110	6	958.00
451	SWR 110B4DS	110	4	639.00
452	SWR 110B3DS	110	3	515.00
453	SWR 110B2DS	110	2	338.00
454	SWR 160B10SS	160	10	2341.00
455	SWR 160B10DS	160	10	2534.00



RING TYPE - SWR (SEWERAGE, WASTE & RAINWATER) FITTINGS

HSN: 39174000



COUPLER

SR. NO.	PRODUCT CODE	SIZE (mm)	STD. PACK Pc./Carton	RATE (pc)
456	SWR 75C	75	42	78.50
457	SWR 110C	110	27	136.00



REDUCER COUPLER

SR. NO.	PRODUCT CODE	SIZE (mm)	STD. PACK Pc./Carton	RATE (pc)
460	SWR 11075RC	110 x 75	60	109.00



REPAIR COUPLER

SR. NO.	PRODUCT CODE	SIZE (mm)	STD. PACK Pc./Carton	RATE (pc)
458	SWR 75CR	75	42	72.00
459	SWR 110CR	110	27	127.00



CLEANSING PIPE

SR. NO.	PRODUCT CODE	SIZE (mm)	STD. PACK Pc./Carton	RATE (pc)
461	SWR 75CLP	75	22	150.00
462	SWR 110CP	110	15	293.00



RING TYPE - SWR (SEWERAGE, WASTE & RAINWATER) FITTINGS

HSN: 39174000



BEND 87.5°

SR. NO.	PRODUCT CODE	SIZE (mm)	STD. PACK Pc./Carton	RATE (pc)
463	SWR 75B	75	25	96.50
464	SWR 110B	110	28	190.00



SINGLE TEE

SR. NO.	PRODUCT CODE	SIZE (mm)	STD. PACK Pc./Carton	RATE (pc)
471	SWR 75TD	75	14	151.00
472	SWR 110TD	110	16	289.00

(DOOR)



BEND 87.5°

SR. NO.	PRODUCT CODE	SIZE (mm)	STD. PACK Pc./Carton	RATE (pc)
465	SWR 75BD	75	24	105.00
466	SWR 110BD	110	24	209.00

(DOOR)



REDUCING SINGLE TEE

SR. NO.	PRODUCT CODE	SIZE (mm)	STD. PACK Pc./Carton	RATE (pc)
473	SWR 11075RT	110 x 75	14	248.00



SHOE BEND 45°

SR. NO.	PRODUCT CODE	SIZE (mm)	STD. PACK Pc./Carton	RATE (pc)
467	SWR 75SB	75	30	80.00
468	SWR 110SB	110	20	152.00



REDUCING SINGLE TEE

SR. NO.	PRODUCT CODE	SIZE (mm)	STD. PACK Pc./Carton	RATE (pc)
474	SWR 11075RTD	110 x 75	11	257.00

(DOOR)



SINGLE TEE

SR. NO.	PRODUCT CODE	SIZE (mm)	STD. PACK Pc./Carton	RATE (pc)
469	SWR 75T	75	17	131.00
470	SWR 110T	110	17	254.00



DOUBLE TEE

SR. NO.	PRODUCT CODE	SIZE (mm)	STD. PACK Pc./Carton	RATE (pc)
475	SWR 75TT	75	12	183.00
476	SWR 110TT	110	14	350.00

IS:14735



1999

RING TYPE - SWR (SEWERAGE, WASTE & RAINWATER) FITTINGS

HSN: 39174000



DOUBLE TEE

SR. NO.	PRODUCT CODE	SIZE (mm)	STD. PACK Pc./Carton	RATE (pc)
477	SWR 75TTD	75	10	184.00
478	SWR 110TTD	110	11	355.00

(DOOR)



DOUBLE Y

SR. NO.	PRODUCT CODE	SIZE (mm)	STD. PACK Pc./Carton	RATE (pc)
485	SWR 75YY	75	9	225.00
486	SWR 110YY	110	9	455.00



SINGLE Y

SR. NO.	PRODUCT CODE	SIZE (mm)	STD. PACK Pc./Carton	RATE (pc)
479	SWR 75Y	75	13	163.00
480	SWR 110Y	110	15	300.00
481	SWR 160Y	160	5	944.50



DOUBLE Y

SR. NO.	PRODUCT CODE	SIZE (mm)	STD. PACK Pc./Carton	RATE (pc)
487	SWR 75YYD	75	8	217.00
488	SWR 110YYD	110	8	435.00

(DOOR)



REDUCING SINGLE Y

SR. NO.	PRODUCT CODE	SIZE (mm)	STD. PACK Pc./Carton	RATE (pc)
482	SWR 160110RY	160 x 110	5	697.00



PIPE CLIP

SR. NO.	PRODUCT CODE	SIZE (mm)	STD. PACK Pc./Carton	RATE (pc)
489	SWR 75PC	75	350	21.50
490	SWR 110PC	110	260	29.00



SINGLE Y

SR. NO.	PRODUCT CODE	SIZE (mm)	STD. PACK Pc./Carton	RATE (pc)
483	SWR 75YD	75	13	179.00
484	SWR 110YD	110	13	367.00

(DOOR)



VENT COWL

SR. NO.	PRODUCT CODE	SIZE (mm)	STD. PACK Pc./Carton	RATE (pc)
491	SWR 75VC	75	192	19.50
492	SWR 110VC	110	126	40.00



RING TYPE - SWR (SEWERAGE, WASTE & RAINWATER) FITTINGS

HSN: 39174000



NAHANI TRAP

SR. NO.	PRODUCT CODE	SIZE (mm)	STD. PACK Pc./Carton	RATE (pc)
493	SWR 11075NT	110 x 75	48	141.00
494	SWR 11090NT	110 x 90	43	160.00
495	SWR 110110NT	110 x 110	32	176.00

(W/O JALI)



P - TRAP

SR. NO.	PRODUCT CODE	SIZE (mm)	STD. PACK Pc./Carton	RATE (pc)
499	SWR 110110PT	110 x 110	16	404.00
500	SWR 125110PT	125 x 110	12	436.00



MULTI FLOOR TRAP

SR. NO.	PRODUCT CODE	SIZE (mm)	STD. PACK Pc./Carton	RATE (pc)
496	SWR 110MFT	110	20	199.00

(W/O SQ. JALI)



Q - TRAP

SR. NO.	PRODUCT CODE	SIZE (mm)	STD. PACK Pc./Carton	RATE (pc)
501	SWR 110110QT	110 x 110	10	609.00
502	SWR 125110QT	125 x 110	10	605.00



ROUND JALI

SR. NO.	PRODUCT CODE	SIZE (mm)	STD. PACK Pc./Carton	RATE (pc)
497	SWR 110NTJ	110	225	22.50



S - TRAP

SR. NO.	PRODUCT CODE	SIZE (mm)	STD. PACK Pc./Carton	RATE (pc)
503	SWR 110110ST	110 x 110	12	681.00
504	SWR 125110ST	125 x 110	12	684.00



SQUARE JALI

SR. NO.	PRODUCT CODE	SIZE (mm)	STD. PACK Pc./Carton	RATE (pc)
498	SWR 150MTJ	150 x 150	40	67.00



DOOR CAP

SR. NO.	PRODUCT CODE	SIZE (mm)	STD. PACK Pc./Carton	RATE (pc)
505	SWR 75DC	75	210	20.50
506	SWR 110DC	110	100	37.00

IS:14735



1999

RING TYPE - SWR (SEWERAGE, WASTE & RAINWATER) FITTING

HSN: 39174000



SOCKET PLUG

SR. NO.	PRODUCT CODE	SIZE (mm)	STD. PACK Pc./Carton	RATE (pc)
507	SWR 75SP	75	120	33.00
508	SWR 110SP	110	50	64.00



RUBBER RING

SR. NO.	PRODUCT CODE	SIZE (mm)	STD. PACK Pc./Bag	RATE (pc)
511	SWR 75RR	75	1	14.00
512	SWR 110RR	110	1	17.00
513	SWR 160RR	160	1	43.50

HSN: 40069090



W.C. CONNECTOR WITH LIP RING

SR. NO.	PRODUCT CODE	SIZE (mm)	STD. PACK Pc./Bag	RATE (pc)
509	SWR 110WCF	110	12	377.00

(FABRICATED)



RUBBER LUBRICANT (JAR)

SR. NO.	PRODUCT CODE	SIZE (gm)	STD. PACK Pc./Carton	RATE (pc)
514	SWR RL100	100	100	46.00
515	SWR RL250	250	40	96.50
516	SWR RL500	500	20	200.50
517	SWR RL1000	1000	10	338.50

HSN: 34039900



LIP RING

SR. NO.	PRODUCT CODE	SIZE (mm)	STD. PACK Pc./Bag	RATE (pc)
510	SWR 110LR	110	1	35.00

HSN: 40169320

IS:13592



2013

PASTING TYPE - SWR (SEWERAGE, WASTE & RAINWATER) PIPES

HSN: 39172390

SR. NO.	PRODUCT CODE	SIZE (mm)	STD. LENGTH (feet)	RATE (per/pipe)
TYPE - A				
518	SWR 75A2OSSP	75	20	1016.00
519	SWR 75A1OSSP	75	10	505.00
520	SWR 75A1ODSP	75	10	545.00
521	SWR 75A6SSP	75	6	359.00
522	SWR 75A6DSP	75	6	383.00
523	SWR 75A4DSP	75	4	265.00
524	SWR 75A3DSP	75	3	185.00
525	SWR 75A2DSP	75	2	121.00
526	SWR 90A2OSSP	90	20	1302.00
527	SWR 90A1OSSP	90	10	650.50
528	SWR 110A2OSP	110	20	1820.00
529	SWR 110A1OSP	110	10	907.00
530	SWR 110A1ODP	110	10	952.00
531	SWR 110A6SSP	110	6	663.00
532	SWR 110A6DSP	110	6	663.50
533	SWR 110A4DSP	110	4	441.00
534	SWR 110A3DSP	110	3	329.00
535	SWR 110A2DSP	110	2	220.00
536	SWR 160A2OSP	160	20	4008.00
537	SWR 160A1OSP	160	10	2003.00
538	SWR 160A1ODP	160	10	2249.00
SEWERAGE PIPES (2.5 kgf/cm²)				
539	SEW 751OSSP	75	10	378.00
540	SEW 1101OSSP	110	10	672.00

SR. NO.	PRODUCT CODE	SIZE (mm)	STD. LENGTH (feet)	RATE (per/pipe)
TYPE - B				
541	SWR 75B2OSSP	75	20	1795.00
542	SWR 75B1OSSP	75	10	887.00
543	SWR 75B1ODSP	75	10	907.00
544	SWR 75B6SSP	75	6	565.00
545	SWR 75B6DSP	75	6	597.00
546	SWR 75B4DSP	75	4	405.00
547	SWR 75B3DSP	75	3	312.00
548	SWR 75B2DSP	75	2	206.00
549	SWR 90B2OSSP	90	20	2076.00
550	SWR 90B1OSSP	90	10	1037.50
551	SWR 110B2OSP	110	20	2704.00
552	SWR 110B1OSP	110	10	1345.00
553	SWR 110B1ODP	110	10	1376.00
554	SWR 110B6SSP	110	6	929.00
555	SWR 110B6DSP	110	6	930.00
556	SWR 110B4DSP	110	4	619.00
557	SWR 110B3DSP	110	3	463.00
558	SWR 110B2DSP	110	2	309.00
559	SWR 160B2OSP	160	20	4652.00
560	SWR 160B1OSP	160	10	2325.00
561	SWR 160B1ODP	160	10	2500.00
SELFIT PIPES (6 kgf/cm²)				
562	SWR 4061OSSP	40	10	209.00
563	SWR 4062OSSP	40	20	423.00
564	SWR 5061OSSP	50	10	310.00
565	SWR 5062OSSP	50	20	622.00



IS:14735



1999

PASTING TYPE - SWR (SEWERAGE, WASTE & RAINWATER) FITTINGS

HSN: 39174000



COUPLER

SR. NO.	PRODUCT CODE	SIZE (mm)	STD. PACK Pc./Carton	RATE (pc)
566	SWR 75CP	75	56	58.50
567	SWR 110CRP	110	33	102.00



REPAIR COUPLER

SR. NO.	PRODUCT CODE	SIZE (mm)	STD. PACK Pc./Carton	RATE (pc)
568	SWR 75CRP	75	56	56.50
569	SWR 110CRPP	110	33	110.00



PASTING TYPE - SWR (SEWERAGE, WASTE & RAINWATER) FITTINGS

HSN: 39174000



BEND 87.5°

SR. NO.	PRODUCT CODE	SIZE (mm)	STD. PACK Pc./Carton	RATE (pc)
570	SWR 75BP	75	32	86.50
571	SWR 110BP	110	20	156.00



SINGLE TEE

SR. NO.	PRODUCT CODE	SIZE (mm)	STD. PACK Pc./Carton	RATE (pc)
578	SWR 75TDP	75	15	137.00
579	SWR 110TDP	110	20	260.00

(DOOR)



BEND 87.5°

SR. NO.	PRODUCT CODE	SIZE (mm)	STD. PACK Pc./Carton	RATE (pc)
572	SWR 75BDP	75	24	96.00
573	SWR 110BDP	110	30	185.00

(DOOR)



DOUBLE TEE

SR. NO.	PRODUCT CODE	SIZE (mm)	STD. PACK Pc./Carton	RATE (pc)
580	SWR 75TTP	75	14	153.00
581	SWR 110TTP	110	16	307.00



SHOE BEND 45°

SR. NO.	PRODUCT CODE	SIZE (mm)	STD. PACK Pc./Carton	RATE (pc)
574	SWR 75SBP	75	48	77.00
575	SWR 110SBP	110	35	145.00



DOUBLE TEE

SR. NO.	PRODUCT CODE	SIZE (mm)	STD. PACK Pc./Carton	RATE (pc)
582	SWR 75TTDP	75	11	156.00
583	SWR 110TTDP	110	12	308.00

(DOOR)



SINGLE TEE

SR. NO.	PRODUCT CODE	SIZE (mm)	STD. PACK Pc./Carton	RATE (pc)
576	SWR 75TP	75	24	118.00
577	SWR 110TP	110	22	230.00



SINGLE Y

SR. NO.	PRODUCT CODE	SIZE (mm)	STD. PACK Pc./Carton	RATE (pc)
584	SWR 75YP	75	15	142.00
585	SWR 110YP	110	12	285.00



IS:14735

PASTING TYPE - SWR (SEWERAGE, WASTE & RAINWATER) FITTINGS

HSN: 39174000



SINGLE Y

SR. NO.	PRODUCT CODE	SIZE (mm)	STD. PACK Pc./Carton	RATE (pc)
586	SWR 75YDP	75	14	161.00
587	SWR 110YDP	110	16	338.00

(DOOR)



REDUCING SINGLE TEE

SR. NO.	PRODUCT CODE	SIZE (mm)	STD. PACK Pc./Carton	RATE (pc)
590	SWR 11075TDP	110 x 75	11	233.00

(DOOR)



REDUCER COUPLER

SR. NO.	PRODUCT CODE	SIZE (mm)	STD. PACK Pc./Carton	RATE (pc)
588	SWR 11075RCP	110 x 75	60	103.00



CLEANSING PIPE

SR. NO.	PRODUCT CODE	SIZE (mm)	STD. PACK Pc./Carton	RATE (pc)
591	SWR 75CPP	75	23	122.00
592	SWR 110CPP	110	15	251.00



REDUCING SINGLE TEE

SR. NO.	PRODUCT CODE	SIZE (mm)	STD. PACK Pc./Carton	RATE (pc)
589	SWR 11075RTP	110 x 75	14	223.00



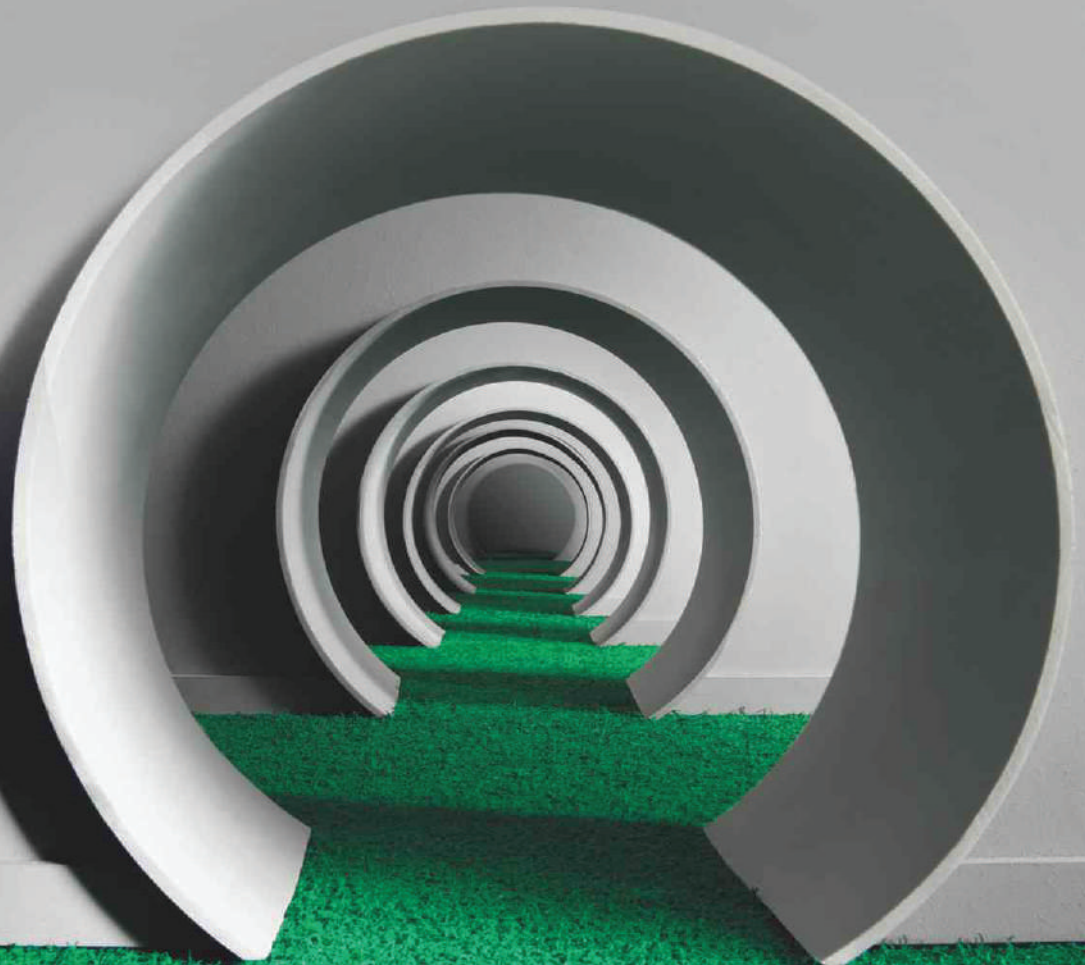
PRECISION[®]

Pipes | Desh ki Lifeline



AGRICULTURE (uPVC)
PIPES & FITTINGS

Precision Agriculture uPVC Pipes and Fittings are manufactured from high impact unplasticised polyvinyl chloride compound that is capable of withstanding the most rigorous on-site conditions and exceeding the most stringent requirements as per Indian standards. The product range is manufactured in accordance with Indian Standards IS:4985-2000 and Moulded Fittings to IS:7834-1987. These pipes and fittings are a perfect choice for potable water supply, where ease of installation, maintenance and zero leakages are a priority.





APPLICATIONS

Agriculture and irrigation, potable water supply, construction, industrial and chemical effluent disposal, tube well casing, telecom and power cable/ducting.

FEATURES



Economical



Easy & quick installation



Corrosion free



Fire Resistant



Flexibility



Hygienic



Chemical resistant



Perfect dimensional standards



High flow characteristic



Low thermal conductivity

COLOUR:



AGRICULTURE uPVC SELFIT PIPES

HSN: 39172390



6 mtr

SR NO	PRODUCT CODE	STD. SIZE (mm)	RATE (mtr)	RATE (6mtr/pc)
CLASS 1/2.5 kgf/cm ² (length: 6mtr)				
593	SELF90CL1/6	90	119.00	714.00
594	SELF110CL1/6	110	170.00	1020.00
595	SELF140CL1/6	140	283.00	1698.00
596	SELF160CL1/6	160	365.00	2190.00
597	SELF180CL1/6	180	471.00	2826.00
598	SELF200CL1/6	200	567.00	3402.00
599	SELF225CL1/6	225	737.00	4422.00
CLASS 2/4 kgf/cm ² (length: 6mtr)				
600	SELF63CL2/6	63	90.00	540.00
601	SELF75CL2/6	75	124.00	744.00
602	SELF90CL2/6	90	170.00	1020.00
603	SELF110CL2/6	110	247.00	1482.00
604	SELF140CL2/6	140	401.00	2406.00
605	SELF160CL2/6	160	526.00	3156.00
606	SELF180CL2/6	180	736.00	4416.00
607	SELF200CL2/6	200	900.00	5400.00
608	SELF225CL2/6	225	1152.00	6912.00
609	SELF250CL2/6	250	1405.00	8430.00

SR7 NO	PRODUCT CODE	STD. SIZE (mm)	RATE (mtr)	RATE (6mtr/pc)
CLASS 3/6 kgf/cm ² (length: 6mtr)				
610	SELF40CL3/6	40	55.50	333.00
611	SELF50CL3/6	50	81.50	489.00
612	SELF63CL3/6	63	133.00	798.00
613	SELF75CL3/6	75	183.00	1098.00
614	SELF90CL3/6	90	257.00	1542.00
615	SELF110CL3/6	110	369.00	2214.00
616	SELF140CL3/6	140	633.00	3798.00
617	SELF160CL3/6	160	795.00	4770.00
618	SELF180CL3/6	180	1059.00	6354.00
619	SELF200CL3/6	200	1320.00	7920.00
620	SELF225CL3/6	225	1673.00	10038.00
621	SELF250CL3/6	250	2053.00	12318.00
CLASS 5/10 kgf/cm ² (length: 6mtr)				
622	SELF20CL5/6	20	22.50	135.00
623	SELF25CL5/6	25	35.50	213.00
624	SELF32CL5/6	32	59.00	354.00
625	SELF40CL5/6	40	90.00	540.00
626	SELF50CL5/6	50	138.00	828.00
627	SELF63CL5/6	63	199.00	1194.00
628	SELF75CL5/6	75	282.00	1692.00
629	SELF90CL5/6	90	403.00	2418.00
630	SELF110CL5/6	110	604.00	3624.00
631	SELF140CL5/6	140	1007.00	6042.00
632	SELF160CL5/6	160	1283.00	7698.00
633	SELF180CL5/6	180	1693.00	10158.00
634	SELF200CL5/6	200	2055.00	12330.00
635	SELF225CL5/6	225	2607.00	15642.00
636	SELF250CL5/6	250	3301.00	19806.00



AGRICULTURE uPVC MOULDED FITTINGS

HSN: 39174000



COUPLER

SR. NO.	PRODUCT CODE	STD. SIZE (mm)	STD. PACK Pc./Bag	RATE (pc)
637	PMIC2010	20	1200	3.00
638	PMIC2510	25	1200	4.50
639	PMIC3210	32	700	7.00
640	PMIC4010	40	500	12.00
641	PMIC5010	50	250	14.00

10 kgf/cm²



COUPLER

SR. NO.	PRODUCT CODE	STD. SIZE (mm)	STD. PACK Pc./Bag	RATE (pc)
642	PMIC636	63	125	29.50
643	PMIC756	75	80	44.00
644	PMIC906	90	50	66.00
645	PMIC1106	110	30	102.00

6 kgf/cm²



ELBOW

SR. NO.	PRODUCT CODE	STD. SIZE (mm)	STD. PACK Pc./Bag	RATE (pc)
646	PMIE4045	40	150	14.00
647	PMIE5045	50	60	20.50

45° 10 kgf/cm²



ELBOW

SR. NO.	PRODUCT CODE	STD. SIZE (mm)	STD. PACK Pc./Bag	RATE (pc)
648	PMIE2010	20	1200	6.00
649	PMIE2510	25	900	9.50
650	PMIE3210	32	500	13.00
651	PMIE4010	40	250	20.00
652	PMIE5010	50	125	33.00

10 kgf/cm²



ELBOW

SR. NO.	PRODUCT CODE	STD. SIZE (mm)	STD. PACK Pc./Bag	RATE (pc)
653	PMIE636	63	80	54.00
654	PMIE756	75	50	72.00
655	PMIE906	90	35	126.00
656	PMIE1106	110	15	213.00
657	PMIE1406	140	12	300.00
658	PMIE1606	160	8	386.00

6 kgf/cm²



TEE

SR. NO.	PRODUCT CODE	STD. SIZE (mm)	STD. PACK Pc./Bag	RATE (pc)
659	PMIT2010	20	900	8.00
660	PMIT2510	25	600	12.00
661	PMIT3210	32	300	18.00
662	PMIT4010	40	200	29.00
663	PMIT5010	50	100	44.00

10 kgf/cm²



TEE

SR. NO.	PRODUCT CODE	STD. SIZE (mm)	STD. PACK Pc./Bag	RATE (pc)
664	PMIT636	63	55	71.50
665	PMIT756	75	35	90.50
666	PMIT906	90	25	158.00
667	PMIT1106	110	15	246.00
668	PMIT1406	140	8	445.00
669	PMIT1606	160	5	490.00

6 kgf/cm²



MALE THREAD ADAPTOR

SR. NO.	PRODUCT CODE	STD. SIZE (mm)	STD. PACK Pc./Bag	RATE (pc)
670	PMTA2010	20	1200	3.50
671	PMTA2510	25	1100	6.00
672	PMTA3210	32	700	10.00

10 kgf/cm²



AGRICULTURE uPVC MOULDED FITTINGS

HSN: 39174000



MALE THREAD ADAPTOR

SR. NO.	PRODUCT CODE	STD. SIZE (mm)	STD. PACK Pc./Bag	RATE (pc)
673	PMTA406	40	350	12.50
674	PMTA506	50	250	18.00
675	PMTA636	63	120	44.50
676	PMTA756	75	80	55.50
677	PMTA906	90	50	71.00
678	PMTA1106	110	30	149.00

6 kgf/cm²



TAIL PIECE

SR. NO.	PRODUCT CODE	STD. SIZE (mm)	STD. PACK Pc./Bag	RATE (pc)
688	PMTP636	63	150	30.50
689	PMTP756	75	120	41.00
690	PMTP906	90	80	56.50
691	PMTP1106	110	50	89.50
692	PMTP1406	140	30	110.00
693	PMTP1606	160	15	165.00

6 kgf/cm²



FEMALE THREAD ADAPTOR

SR. NO.	PRODUCT CODE	STD. SIZE (mm)	STD. PACK Pc./Bag	RATE (pc)
679	PFTA2010	20	1000	4.00
680	PFTA2510	25	1000	6.50
681	PFTA3210	32	700	8.00

10 kgf/cm²



THREADED END CAP

SR. NO.	PRODUCT CODE	STD. SIZE (mm)	STD. PACK Pc./Bag	RATE (pc)
694	PTEC406	40	300	13.50
695	PTEC506	50	200	14.00
696	PTEC636	63	150	21.50
697	PTEC756	75	125	32.50
698	PTEC906	90	100	47.00
699	PTEC1106	110	60	66.00

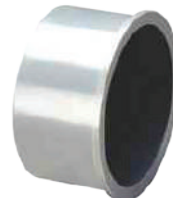
6 kgf/cm²



FEMALE THREAD ADAPTOR

SR. NO.	PRODUCT CODE	STD. SIZE (mm)	STD. PACK Pc./Bag	RATE (pc)
682	PFTA406	40	400	12.00
683	PFTA506	50	200	18.50
684	PFTA636	63	120	42.50
685	PFTA756	75	80	62.50
686	PFTA906	90	50	94.50
687	PFTA1106	110	30	109.00

6 kgf/cm²



END CAP

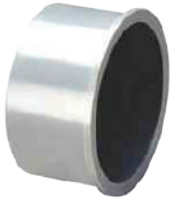
SR. NO.	PRODUCT CODE	STD. SIZE (mm)	STD. PACK Pc./Bag	RATE (pc)
700	PMEC2010	20	1500	3.00
701	PMEC2510	25	1500	3.00
702	PMEC3210	32	1000	6.00

10 kgf/cm²



AGRICULTURE uPVC MOULDED FITTINGS

HSN: 39174000



END CAP

SR. NO.	PRODUCT CODE	STD. SIZE (mm)	STD. PACK Pc./Bag	RATE (pc)
703	PMEC406	40	600	10.00
704	PMEC506	50	500	12.50
705	PMEC636	63	150	31.00
706	PMEC756	75	100	42.50
707	PMEC906	90	70	56.00
708	PMEC1106	110	50	70.00

6 kgf/cm²



REDUCER COUPLER

SR. NO.	PRODUCT CODE	STD. SIZE (mm)	STD. PACK Pc./Bag	RATE (pc)
718	PMIR2520	25 x 20	1000	6.00
719	PMIR3220	32 x 20	750	7.00
720	PMIR3225	32 x 25	750	10.00

10 kgf/cm²



REDUCER COUPLER

SR. NO.	PRODUCT CODE	STD. SIZE (mm)	STD. PACK Pc./Bag	RATE (pc)
721	PMIR4020	40 x 20	250	9.50
722	PMIR4032	40 x 32	200	13.00
723	PMIR5032	50 x 32	300	17.00
724	PMIR5040	50 x 40	300	20.00
725	PMIR6332	63 x 32	100	21.50
726	PMIR6340	63 x 40	100	22.50
727	PMIR6350	63 x 50	175	28.50
728	PMIR7540	75 x 40	80	31.00
729	PMIR7550	75 x 50	80	32.50
730	PMIR7563	75 x 63	120	40.50
731	PMIR9063	90 x 63	80	54.00
732	PMIR9075	90 x 75	80	58.50
733	PMIR11063	110 x 63	50	72.50
734	PMIR11075	110 x 75	50	77.50
735	PMIR11090	110 x 90	50	122.00

6 kgf/cm²



REDUCER BUSH

SR. NO.	PRODUCT CODE	STD. SIZE (mm)	STD. PACK Pc./Bag	RATE (pc)
709	PMRB2520	25 x 20	500	2.50
710	PMRB3220	32 x 20	400	6.50
711	PMRB3225	32 x 25	400	4.00

10 kgf/cm²



REDUCER BUSH

SR. NO.	PRODUCT CODE	SIZE (mm)	STD. PACK Pc./Bag	RATE (pc)
712	PMRB6340	63 x 40	150	33.00
713	PMRB6350	63 x 50	150	24.50
714	PMRB9063	90 x 63	80	58.50
715	PMRB9075	90 x 75	80	63.50
716	PMRB11075	110 x 75	50	118.00
717	PMRB11090	110 x 90	50	112.00

6 kgf/cm²



REDUCER TEE

SR. NO.	PRODUCT CODE	SIZE (mm)	STD. PACK Pc./Bag	RATE (pc)
736	PMRT2520	25 x 25 x 20	600	13.50
737	PMRT3220	32 x 32 x 20	300	21.50
738	PMRT3225	32 x 32 x 25	300	22.50

10 kgf/cm²



AGRICULTURE UPVC MOULDED FITTINGS

HSN: 39174000



REDUCER TEE

SR. NO.	PRODUCT CODE	STD. SIZE (mm)	STD. PACK Pc./Bag	RATE (pc)
739	PMRT6340	63 x 63 x 40	55	104.00
740	PMRT11075	110 x 110 x 75	15	325.00
741	PMRT11090	110 x 110 x 90	15	326.00

6 kgf/cm²



ELBOW (L.W.)

SR. NO.	PRODUCT CODE	STD. SIZE (mm)	STD. PACK Pc./Bag	RATE (pc)
766	PMIE632	63	190	23.50
767	PMIE752	75	130	37.50
768	PMIE902	90	78	51.00
769	PMIE1102	110	42	84.00

2.5 kgf/cm²



SERVICE SADDLE

SR. NO.	PRODUCT CODE	STD. SIZE (mm)	STD. PACK Pc./Bag	RATE (pc)
742	PMIS6320	63 x 20	50	103.00
743	PMIS6325	63 x 25	50	104.00
744	PMIS6332	63 x 32	50	116.00
745	PMIS7520	75 x 20	50	127.00
746	PMIS7525	75 x 25	50	127.00
747	PMIS7532	75 x 32	50	130.00
748	PMIS9020	90 x 20	40	141.00
749	PMIS9025	90 x 25	40	141.00
750	PMIS9032	90 x 32	40	148.00
751	PMIS11020	110 x 20	40	161.00
752	PMIS11025	110 x 25	40	161.00
753	PMIS11032	110 x 32	40	170.00
754	PMIS14020	140 x 20	25	181.00
755	PMIS14025	140 x 25	25	181.00
756	PMIS14032	140 x 32	25	201.00
757	PMIS14040	140 x 40	25	201.00
758	PMIS14050	140 x 50	25	201.00
759	PMIS14063	140 x 63	25	201.00
760	PMIS16020	160 x 20	20	215.00
761	PMIS16025	160 x 25	20	215.00
762	PMIS16032	160 x 32	20	216.00
763	PMIS16040	160 x 40	20	216.00
764	PMIS16050	160 x 50	20	216.00
765	PMIS16063	160 x 63	20	216.00

6 kgf/cm²



TEE (L.W.)

SR. NO.	PRODUCT CODE	STD. SIZE (mm)	STD. PACK Pc./Bag	RATE (pc)
770	PMIT632	63	150	33.50
771	PMIT752	75	96	47.00
772	PMIT902	90	58	66.50
773	PMIT1102	110	30	106.00

2.5 kgf/cm²



UPVC SOLVENT CEMENT

SR. NO.	PRODUCT CODE	STD. SIZE (ml)	STD. PACK Pc./Carton	RATE (pc)
774	AGRI B250	250ml	24 98	159.50
775	AGRI B500	500ml	12 48	254.50
776	AGRI B1L	1L	6 24	437.50

TIN PACKING
HSN: 35061000



AGRICULTURE uPVC PIPES

HSN: 39172390

DIMENSION OF AGRICULTURE uPVC PIPES - IS 4985-1988 (all Dimensions in mm)

Nominal Outside Diameter (Nominal Size)	Mean Outside Diameter		Working Pressure, Mpa							
			Class 1 0.25 Mpa		Class 2 0.4 Mpa		Class 3 0.6 Mpa		Class 5 1.0 Mpa	
			Min.	Max.	Min.	Max.	Min.	Max.	Min.	Max.
20	20.0	20.3							1.1	1.5
25	25.0	25.3							1.4	1.8
32	32.0	32.3							1.8	2.2
40	40.0	40.3					1.4	1.8	2.2	2.7
50	50.0	50.3					1.7	2.1	2.8	3.3
63	63.0	63.3			1.5	1.9	2.2	2.7	3.5	4.1
75	75.0	75.3			1.8	2.2	2.6	3.1	4.2	4.9
90	90.0	90.3	1.3	1.7	2.1	2.6	3.1	3.7	5.0	5.7
110	110.0	110.4	1.6	2.0	2.5	3.0	3.7	4.3	6.1	7.1
125	125.0	125.4	1.8	2.2	2.9	3.4	4.3	5.0	6.9	8.0
140	140.0	140.5	2.0	2.4	3.2	3.8	4.8	5.5	7.7	8.9
160	160.0	160.5	2.3	2.8	3.7	4.3	5.4	6.2	8.8	10.2
180	180.0	180.6	2.6	3.1	4.2	4.9	6.1	7.1	9.9	11.4
200	200.0	200.6	2.9	3.4	4.6	5.3	6.8	7.9	11.0	12.7
225	225.0	225.7	3.3	3.9	5.2	6.0	7.6	8.8	12.4	14.3
250	250.0	250.8	3.6	4.2	5.7	6.5	8.5	9.8	13.8	15.9



plumbing@precisionpipes.com
www.precisionpipes.com

We Care +91 77150 00015

PRECISION PLASTIC INDUSTRIES PVT. LTD.

19/D, Nand Jyot Industrial Estate, Safed Pool, Andheri - Kurla Road,
Andheri East, Mumbai 400 072, Maharashtra, India.