



**PRICE LIST**  
JUNE 7, 2024

**SAFETY  
MEIN  
SAMJHOTA  
NAHIN.**



# ROUND CONDUIT uPVC PIPES & FITTINGS



## Precision Round Conduit uPVC

**Pipes & Fittings** are manufactured from a specially formulated unplasticated polyvinyl chloride (uPVC) to meet the most stringent Indian and International standards.

Our products are made of extra super high impact material which make them safe to use in harsh environments.

The products are manufactured in accordance with IS 9537 - Part 3, BS EN 61386 21 for uPVC conduits, BS 4607 for uPVC fittings.



Our premium range of **TRANSPARENT ROUND CONDUIT uPVC PIPES & FITTINGS** are also available in red, green & yellow on request.

**1ST TIME IN INDIA!**

## Applications

Channelising concealed and surface wiring.  
Telecommunication and cable ducting.

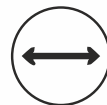
### DIMENSIONS OF ROUND CONDUIT uPVC PIPES IS 9537 - PART 3

Nominal Size (mm)	Outside Diameter (mm)	Tolerance on Outside Diameter (mm)	Inside Diameter (Min.) (mm)		
			Light	Medium	Heavy
20	20	-0.3	17.4	16.9	15.8
25	25	-0.4	22.1	21.4	20.6
32	32	-0.4	28.6	27.8	26.6
40	40	-0.4	35.8	35.4	34.4
50	50	-0.5	45.1	44.3	43.2
63	63	-0.6	57.0	-	-

#### #SPECIAL SIZES

19	19	-0.3	16.5	16.0	15.1
----	----	------	------	------	------

## Features



Various Diameters & Grades



Fire retardant & corrosion free



Easy and quick installation



Thermal resistant  
(-5° C to +60° C)

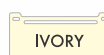


Durable & Impact resistant



Laser Engraved Pipe

- Light, medium and heavy mechanical stress, to suit various applications and site conditions
- Wide range of component maximises application
- Precision circular boxes and adaptable boxes are provided with M4 brass insert with a load suspension capacity of 3 Kgs at +60° C



# ROUND CONDUIT uPVC PIPES (SOCKETED)

HSN : 39172310



SR. NO.	PRODUCT CODE	SIZE	STANDARD PACK		NORTH INDIA PACK	RATE Mtr.	
		OD (mm)	Pc. x Mtr.	Mtr. / Bdl.	Mtr. / Bdl.		
LMS (LIGHT MECHANICAL STRESS)							
#	1	PRCS 19L	19	100 x 3m	300	-	22.25
#	2	PRCS 19LNI	19	40 x 3m	-	120	22.25
	3	PRCS 20L	20	100 x 3m	300	-	23.75
	4	PRCS 20LNI	20	40 x 3m	-	120	23.75
	5	PRCS 25L	25	100 x 3m	300	-	32.75
	6	PRCS 25LNI	25	25 x 3m	-	75	32.75
	7	PRCS 32L	32	50 x 3m	150	-	46.00
	8	PRCS 32LNI	32	10 x 3m	-	30	46.00
	9	PRCS 40L	40	25 x 3m	75	-	73.50
	10	PRCS 40LNI	40	5 x 3m	-	15	73.50
	11	PRCS 50L	50	20 x 3m	60	-	105.00
	12	PRCS 50LNI	50	5 x 3m	-	15	105.00
	13	PRCS 63L	63	18 x 3m	54	-	160.25

<b>MMS (MEDIUM MECHANICAL STRESS)</b>						
# 14	PRCS 19M	19	100 x 3m	300	-	25.25
# 15	PRCS 19MNI	19	40 x 3m	-	120	25.25
16	PRCS 20M	20	100 x 3m	300	-	26.75
17	PRCS 20MNI	20	40 x 3m	-	120	26.75
18	PRCS 25M	25	100 x 3m	300	-	37.50
19	PRCS 25MNI	25	25 x 3m	-	75	37.50
20	PRCS 32M	32	50 x 3m	150	-	56.50
21	PRCS 32MNI	32	10 x 3m	-	30	56.50
22	PRCS 40M	40	25 x 3m	75	-	80.75
23	PRCS 40MNI	40	5 x 3m	-	15	80.75
24	PRCS 50M	50	20 x 3m	60	-	122.75
25	PRCS 50MNI	50	5 x 3m	-	15	122.75

SR. NO.	PRODUCT CODE	SIZE	STANDARD PACK		NORTH INDIA PACK	RATE Mtr.
		OD (mm)	Pc. x Mtr.	Mtr. / Bdl.	Mtr. / Bdl.	
HMS (HEAVY MECHANICAL STRESS)						
# 26	PRCS 19H	19	100 x 3m	300	-	34.50
# 27	PRCS 19HNI	19	40 x 3m	-	120	34.50
28	PRCS 20H	20	100 x 3m	300	-	37.25
29	PRCS 20HNI	20	40 x 3m	-	120	37.25
30	PRCS 25H	25	50 x 3m	150	-	46.75
31	PRCS 25HNI	25	25 x 3m	-	75	46.75
32	PRCS 32H	32	50 x 3m	150	-	73.50
33	PRCS 32HNI	32	10 x 3m	-	30	73.50
34	PRCS 40H	40	25 x 3m	75	-	96.25
35	PRCS 40HNI	40	5 x 3m	-	15	96.25
36	PRCS 50H	50	20 x 3m	60	-	145.75
37	PRCS 50HNI	50	5 x 3m	-	15	145.75



# Special Size

## ROUND CONDUIT uPVC PIPES (SOCKETED) CE FRLS

HSN : 39172310  
SPECIAL SIZES



SR. NO.	PRODUCT CODE	SIZE OD (mm)	STANDARD PACK		NORTH INDIA PACK	RATE Mtr.
			Pc x Mtr	Mtr x Bdl	Mtr x Bdl	
# 38	PRCS19SPL	19x1mm	100x3m	300	-	17.25
# 39	PRCS19SPLNI	19x1mm	40x3m	-	120	17.25
# 40	PRCS20SPL	20x1mm	100x3m	300	-	19.00
# 41	PRCS20SPLNI	20x1mm	40x3m	-	120	19.00
# 42	PRCS25SPL	25x1mm	100x3m	300	-	23.50
# 43	PRCS25SPLNI	25x1mm	25x3m	-	75	23.50

# Special Size

## BENDING SPRING

HSN : 73201019



SR. NO.	PRODUCT CODE	SIZE OD (mm)	COLOUR	STANDARD PACK		RATE Pc
				Pc/Bag	Pc/Cartron	
LIGHT GAUGE						
44	PBS20L	20	Black	10	50	272.00
45	PBS25L	25	Black	5	25	360.00
MEDIUM GAUGE						
46	PBS20M	20	Silver	10	50	272.00
47	PBS25M	25	Silver	5	25	360.00
HEAVY GAUGE						
48	PBS20H	20	Gold	10	50	272.00
49	PBS25H	25	Gold	5	25	360.00

Ø Suitable for 19mm LMS and 19mm MMS conduits also.

# ROUND CONDUIT UPVC PIPE FITTINGS

HSN : 39174000



## CIRCULAR BOX WITHOUT LID

### TERMINAL - 1 WAY CIRCULAR BOX



SR. NO.	PRODUCT CODE	SIZE	STANDARD PACK		RATE Pc
		OD (mm)	Pc./Box	Pc./Carton	
50	PRCB 191	19	20	600	19.00
51	PRCB 201	20	20	600	19.50
52	PRCB 251	25	15	450	24.50
53	PRCB 321	32	10	160	45.50
54	PRCB 401	40	10	160	54.75
55	PRCB 501	50	5	80	98.75

### INTERSECTION - 4 WAY CIRCULAR BOX



SR. NO.	PRODUCT CODE	SIZE	STANDARD PACK		RATE Pc
		OD (mm)	Pc./Box	Pc./Carton	
74	PRCB 194	19	20	400	23.75
75	PRCB 204	20	20	400	24.25
76	PRCB 254	25	15	240	33.50
77	PRCB 324	32	10	160	51.75
78	PRCB 404	40	10	160	71.00
79	PRCB 504	50	5	80	126.00

### ANGLE - 2 WAY CIRCULAR BOX



SR. NO.	PRODUCT CODE	SIZE	STANDARD PACK		RATE Pc
		OD (mm)	Pc./Box	Pc./Carton	
56	PRCB 192A	19	20	400	19.50
57	PRCB 202A	20	20	400	20.00
58	PRCB 252A	25	15	300	24.75
59	PRCB 322A	32	10	160	47.75
60	PRCB 402A	40	10	160	59.50
61	PRCB 502A	50	5	80	107.25

### TERMINAL - 1 WAY DEEP CIRCULAR BOX



SR. NO.	PRODUCT CODE	SIZE	STANDARD PACK		RATE Pc
		OD (mm)	Pc./Box	Pc./Carton	
80	PRCB 191D	19	10	280	31.25
81	PRCB 201D	20	10	280	32.50
82	PRCB 251D	25	10	280	39.25
83	PRCB 321D	32	10	280	45.75

### THROUGH - 2 WAY CIRCULAR BOX



SR. NO.	PRODUCT CODE	SIZE	STANDARD PACK		RATE Pc
		OD (mm)	Pc./Box	Pc./Carton	
62	PRCB 192S	19	20	400	19.50
63	PRCB 202S	20	20	400	20.00
64	PRCB 252S	25	15	300	24.75
65	PRCB 322S	32	10	160	47.75
66	PRCB 402S	40	10	160	59.50
67	PRCB 502S	50	5	80	107.25

### ANGLE - 2 WAY DEEP CIRCULAR BOX



SR. NO.	PRODUCT CODE	SIZE	STANDARD PACK		RATE Pc
		OD (mm)	Pc./Box	Pc./Carton	
84	PRCB 192AD	19	10	280	33.25
85	PRCB 202AD	20	10	280	33.75
86	PRCB 252AD	25	10	280	40.50
87	PRCB 322AD	32	10	220	49.50

### TEE - 3 WAY CIRCULAR BOX



SR. NO.	PRODUCT CODE	SIZE	STANDARD PACK		RATE Pc
		OD (mm)	Pc./Box	Pc./Carton	
68	PRCB 193	19	20	400	22.00
69	PRCB 203	20	20	400	23.00
70	PRCB 253	25	15	300	29.50
71	PRCB 323	32	10	160	49.25
72	PRCB 403	40	10	160	62.50
73	PRCB 503	50	5	80	115.50

### THROUGH - 2 WAY DEEP CIRCULAR BOX



SR. NO.	PRODUCT CODE	SIZE	STANDARD PACK		RATE Pc
		OD (mm)	Pc./Box	Pc./Carton	
88	PRCB 192SD	19	10	200	33.25
89	PRCB 202SD	20	10	200	33.75
90	PRCB 252SD	25	10	200	40.50
91	PRCB 322SD	32	10	200	49.50



# ROUND CONDUIT uPVC PIPE FITTINGS

HSN : 39174000



## CIRCULAR BOX WITHOUT LID

### TEE - 3 WAY

### DEEP CIRCULAR BOX



SR. NO.	PRODUCT CODE	SIZE	STANDARD PACK		RATE Pc
		OD (mm)	Pc./Box	Pc./Carton	
92	PRCB 193D	19	10	220	37.50
93	PRCB 203D	20	10	220	38.25
94	PRCB 253D	25	10	220	47.75
95	PRCB 323D	32	10	160	53.25

### INTERSECTION - 4 WAY

### DEEP CIRCULAR BOX



SR. NO.	PRODUCT CODE	SIZE	STANDARD PACK		RATE Pc
		OD (mm)	Pc./Box	Pc./Carton	
96	PRCB 194D	19	10	220	38.00
97	PRCB 204D	20	10	220	39.25
98	PRCB 254D	25	10	220	50.50
99	PRCB 324D	32	10	160	54.75

### BRANCH - 2 WAY (U)

### CIRCULAR BOX



SR. NO.	PRODUCT CODE	SIZE	STANDARD PACK		RATE Pc
		OD (mm)	Pc./Box	Pc./Carton	
100	PRCB 19U	19	20	400	33.75
101	PRCB 20U	20	20	400	34.25
102	PRCB 25U	25	20	400	46.25

### BRANCH - 3 WAY (Y)

### CIRCULAR BOX



SR. NO.	PRODUCT CODE	SIZE	STANDARD PACK		RATE Pc
		OD (mm)	Pc./Box	Pc./Carton	
103	PRCB 19Y	19	20	400	36.25
104	PRCB 20Y	20	20	400	38.25
105	PRCB 25Y	25	15	300	50.25

### BRANCH - 4 WAY (H)

### CIRCULAR BOX



SR. NO.	PRODUCT CODE	SIZE	STANDARD PACK		RATE Pc
		OD (mm)	Pc./Box	Pc./Carton	
106	PRCB 19H	19	15	300	38.50
107	PRCB 20H	20	15	300	39.50
108	PRCB 25H	25	15	300	53.75

### BACK OUTLET - 1 WAY

### CIRCULAR BOX



SR. NO.	PRODUCT CODE	SIZE	STANDARD PACK		RATE Pc
		OD (mm)	Pc./Box	Pc./Carton	
109	PRCB 201 BO	20	20	400	33.50
110	PRCB 251 BO	25	15	300	47.75

### BACK OUTLET THROUGH - 2 WAY

### CIRCULAR BOX



SR. NO.	PRODUCT CODE	SIZE	STANDARD PACK		RATE Pc
		OD (mm)	Pc./Box	Pc./Carton	
111	PRCB 202S BO	20	20	400	34.00
112	PRCB 252S BO	25	15	300	50.25

### BACK OUTLET ANGLE - 2 WAY

### CIRCULAR BOX



SR. NO.	PRODUCT CODE	SIZE	STANDARD PACK		RATE Pc
		OD (mm)	Pc./Box	Pc./Carton	
113	PRCB 202A BO	20	20	400	34.00
114	PRCB 252A BO	25	15	300	50.25

### BACK OUTLET TEE - 3 WAY

### CIRCULAR BOX



SR. NO.	PRODUCT CODE	SIZE	STANDARD PACK		RATE Pc
		OD (mm)	Pc./Box	Pc./Carton	
115	PRCB 203 BO	20	20	400	38.25
116	PRCB 253 BO	25	15	300	54.25

### WITH SCREW

### CIRCULAR LID



SR. NO.	PRODUCT CODE	SIZE	STANDARD PACK		RATE Pc
		OD (mm)	Pc./Box	Pc./Carton	
117	PRCL65	65	100	2000	6.00
118	PRCL80	80	100	2000	11.75
119	PRCL85	85	100	2000	11.75
120	PRCL90	90	100	1800	13.25
121	PRCL93	93	25	750	13.25
122	PRCL110	110	50	900	20.75

### WITHOUT SCREW

### CIRCULAR LID



SR. NO.	PRODUCT CODE	SIZE	STANDARD PACK		RATE Pc
		OD (mm)	Pc./Box	Pc./Carton	
123	PRCL65WS	65	100	2000	4.75
124	PRCL80WS	80	100	2000	11.25
125	PRCL85WS	85	100	2000	11.25
126	PRCL90WS	90	100	1800	12.75
127	PRCL93WS	93	25	750	12.75
128	PRCL110WS	110	50	900	20.25

» 65 - For 19/20/25mm JB, DJB & 32 DJB

» 80 - For 32/40mm JB

» 93 - For 50mm JB

# ROUND CONDUIT uPVC PIPE FITTINGS

HSN : 39174000



## CIRCULAR BOX WITH LID & SCREW

### TERMINAL - 1 WAY CIRCULAR BOX



SR. NO.	PRODUCT CODE	SIZE	STANDARD PACK		RATE Pc
		OD (mm)	Pc./Box	Pc./Carton	
129	PRCB 191L	19	20	600	26.00
130	PRCB 201L	20	20	600	26.50
131	PRCB 251L	25	15	450	31.50
132	PRCB 321L	32	10	160	58.25
133	PRCB 401L	40	10	160	67.50
134	PRCB 501L	50	5	80	113.00

### TERMINAL - 1 WAY (AUTO LID W/O SCREW) CIRCULAR BOX



SR. NO.	PRODUCT CODE	SIZE	STANDARD PACK		RATE Pc
		OD (mm)	Pc./Box	Pc./Carton	
135	PRCB 201AL	20	20	360	23.75
136	PRCB 251AL	25	15	270	29.75

### ANGLE - 2 WAY CIRCULAR BOX



SR. NO.	PRODUCT CODE	SIZE	STANDARD PACK		RATE Pc
		OD (mm)	Pc./Box	Pc./Carton	
137	PRCB 192AL	19	20	400	26.50
138	PRCB 202AL	20	20	400	27.00
139	PRCB 252AL	25	15	300	31.75
140	PRCB 322AL	32	10	160	60.50
141	PRCB 402AL	40	10	160	72.25
142	PRCB 502AL	50	5	80	121.50

### ANGLE - 2 WAY (AUTO LID W/O SCREW) CIRCULAR BOX



SR. NO.	PRODUCT CODE	SIZE	STANDARD PACK		RATE Pc
		OD (mm)	Pc./Box	Pc./Carton	
143	PRCB 202AAL	20	15	270	26.75
144	PRCB 252AAL	25	10	180	31.25

### THROUGH - 2 WAY CIRCULAR BOX



SR. NO.	PRODUCT CODE	SIZE	STANDARD PACK		RATE Pc
		OD (mm)	Pc./Box	Pc./Carton	
145	PRCB 192SL	19	20	400	26.50
146	PRCB 202SL	20	20	400	27.00
147	PRCB 252SL	25	15	300	31.75
148	PRCB 322SL	32	10	160	60.50
149	PRCB 402SL	40	10	160	72.25
150	PRCB 502SL	50	5	80	121.50

### THROUGH - 2 WAY (AUTO LID W/O SCREW) CIRCULAR BOX



SR. NO.	PRODUCT CODE	SIZE	STANDARD PACK		RATE Pc
		OD (mm)	Pc./Box	Pc./Carton	
151	PRCB 202SAL	20	15	270	26.75
152	PRCB 252SAL	25	10	180	31.25

### TEE - 3 WAY CIRCULAR BOX



SR. NO.	PRODUCT CODE	SIZE	STANDARD PACK		RATE Pc
		OD (mm)	Pc./Box	Pc./Carton	
153	PRCB 193L	19	20	400	29.00
154	PRCB 203L	20	20	400	30.00
155	PRCB 253L	25	15	300	36.50
156	PRCB 323L	32	5	110	62.00
157	PRCB 403L	40	5	110	75.25
158	PRCB 503L	50	5	80	129.75

### TEE - 3 WAY (AUTO LID W/O SCREW) CIRCULAR BOX



SR. NO.	PRODUCT CODE	SIZE	STANDARD PACK		RATE Pc
		OD (mm)	Pc./Box	Pc./Carton	
159	PRCB 203AL	20	15	270	28.25
160	PRCB 253AL	25	10	180	34.00

### INTERSECTION - 4 WAY CIRCULAR BOX



SR. NO.	PRODUCT CODE	SIZE	STANDARD PACK		RATE Pc
		OD (mm)	Pc./Box	Pc./Carton	
161	PRCB 194L	19	20	320	30.75
162	PRCB 204L	20	20	320	31.25
163	PRCB 254L	25	15	240	40.50
164	PRCB 324L	32	5	110	64.50
165	PRCB 404L	40	5	110	83.75
166	PRCB 504L	50	5	80	140.25

### INTERSECTION - 4 WAY (AUTO LID W/O SCREW) CIRCULAR BOX



SR. NO.	PRODUCT CODE	SIZE	STANDARD PACK		RATE Pc
		OD (mm)	Pc./Box	Pc./Carton	
167	PRCB 204AL	20	12	216	30.75
168	PRCB 254AL	25	15	150	39.25

# ROUND CONDUIT uPVC PIPE FITTINGS

HSN : 39174000



## PP CIRCULAR BOX WITH LID & SCREW



### INTERSECTION - 4 WAY (POLYPROPYLENE) CIRCULAR BOX



SR. NO.	PRODUCT CODE	SIZE	STANDARD PACK		RATE Pc
		OD (mm)	Pc./Box	Pc./Carton	
169	PPCB194L	19	15	240	22.75
170	PPCB254L	25	10	250	27.25

## PP DEEP CIRCULAR BOX WITH LID & SCREW



### INTERSECTION - 4 WAY (POLYPROPYLENE) DEEP CIRCULAR BOX



SR. NO.	PRODUCT CODE	SIZE	STANDARD PACK		RATE Pc
		OD (mm)	Pc./Box	Pc./Carton	
171	PPCB194DL	19	12	240	27.25
172	PPCB254DL	25	10	200	38.75

## DEEP CIRCULAR BOX WITH LID & SCREW

### TERMINAL - 1 WAY DEEP CIRCULAR BOX



SR. NO.	PRODUCT CODE	SIZE	STANDARD PACK		RATE Pc
		OD (mm)	Pc./Box	Pc./Carton	
173	PRCB 191DL	19	10	280	38.25
174	PRCB 201DL	20	10	280	39.50
175	PRCB 251DL	25	10	280	46.25
176	PRCB 321DL	32	10	280	62.25

### ANGLE - 2 WAY DEEP CIRCULAR BOX



SR. NO.	PRODUCT CODE	SIZE	STANDARD PACK		RATE Pc
		OD (mm)	Pc./Box	Pc./Carton	
177	PRCB 192ADL	19	10	280	40.25
178	PRCB 202ADL	20	10	280	40.75
179	PRCB 252ADL	25	10	280	47.50
180	PRCB 322ADL	32	10	280	64.50

### THROUGH - 2 WAY DEEP CIRCULAR BOX



SR. NO.	PRODUCT CODE	SIZE	STANDARD PACK		RATE Pc
		OD (mm)	Pc./Box	Pc./Carton	
181	PRCB 192SDL	19	10	200	40.25
182	PRCB 202SDL	20	10	200	40.75
183	PRCB 252SDL	25	10	200	47.50
184	PRCB 322SDL	32	10	200	64.50

### TEE - 3 WAY DEEP CIRCULAR BOX



SR. NO.	PRODUCT CODE	SIZE	STANDARD PACK		RATE Pc
		OD (mm)	Pc./Box	Pc./Carton	
185	PRCB 193DL	19	10	220	44.50
186	PRCB 203DL	20	10	220	45.25
187	PRCB 253DL	25	10	220	54.75
188	PRCB 323DL	32	10	160	66.00

### INTERSECTION - 4 WAY DEEP CIRCULAR BOX



SR. NO.	PRODUCT CODE	SIZE	STANDARD PACK		RATE Pc
		OD (mm)	Pc./Box	Pc./Carton	
189	PRCB 194DL	19	10	220	45.00
190	PRCB 204DL	20	10	220	46.25
191	PRCB 254DL	25	10	220	57.50
192	PRCB 324DL	32	10	160	68.50

### BRANCH - 2 WAY (U) CIRCULAR BOX



SR. NO.	PRODUCT CODE	SIZE	STANDARD PACK		RATE Pc
		OD (mm)	Pc./Box	Pc./Carton	
193	PRCB 19UL	19	20	400	40.75
194	PRCB 20UL	20	20	400	41.25
195	PRCB 25UL	25	20	400	53.25

### BRANCH - 3 WAY (Y) CIRCULAR BOX



SR. NO.	PRODUCT CODE	SIZE	STANDARD PACK		RATE Pc
		OD (mm)	Pc./Box	Pc./Carton	
196	PRCB 19YL	19	15	300	43.25
197	PRCB 20YL	20	15	300	45.25
198	PRCB 25YL	25	15	300	57.25

### BRANCH - 4 WAY (H) CIRCULAR BOX



SR. NO.	PRODUCT CODE	SIZE	STANDARD PACK		RATE Pc
		OD (mm)	Pc./Box	Pc./Carton	
199	PRCB 19HL	19	15	300	45.50
200	PRCB 20HL	20	15	300	46.50
201	PRCB 25HL	25	15	300	60.75

# ROUND CONDUIT uPVC PIPE FITTINGS

HSN : 39174000



## BACK OUTLET - 1 WAY CIRCULAR BOX



SR. NO.	PRODUCT CODE	SIZE	STANDARD PACK		RATE Pc
		OD (mm)	Pc./Box	Pc./Carton	
202	PRCB 201 BOL	20	20	400	40.50
203	PRCB 251 BOL	25	15	300	54.75

## BACK OUTLET THROUGH - 2 WAY CIRCULAR BOX



SR. NO.	PRODUCT CODE	SIZE	STANDARD PACK		RATE Pc
		OD (mm)	Pc./Box	Pc./Carton	
204	PRCB 202S BOL	20	15	300	41.00
205	PRCB 252S BOL	25	15	240	57.25

## BACK OUTLET ANGLE - 2 WAY CIRCULAR BOX



SR. NO.	PRODUCT CODE	SIZE	STANDARD PACK		RATE Pc
		OD (mm)	Pc./Box	Pc./Carton	
206	PRCB 202A BOL	20	15	300	41.00
207	PRCB 252A BOL	25	15	240	57.25

## BACK OUTLET TEE - 3 WAY CIRCULAR BOX



SR. NO.	PRODUCT CODE	SIZE	STANDARD PACK		RATE Pc
		OD (mm)	Pc./Box	Pc./Carton	
208	PRCB 203 BOL	20	15	300	45.25
209	PRCB 253 BOL	25	15	240	61.25

## CIRCULAR EXTENSION RING



SR. NO.	PRODUCT CODE	SIZE	STANDARD PACK		RATE Pc
		OD (mm)	Pc./Box	Pc./Carton	
210	PRER 20	20	50	800	13.75
211	PRER 25	25	40	640	17.75

## LOOP IN BOX



SR. NO.	PRODUCT CODE	SIZE	STANDARD PACK		RATE Pc
		OD (mm)	Pc./Box	Pc./Carton	
212	PRLB 19	19 (4 punch)	20	400	19.50
213	PRLB 20	20 (4 punch)	20	400	19.50
214	PRLB 25	25 (2 punch)	20	400	19.50

## LOOP IN BOX EXTENSION



SR. NO.	PRODUCT CODE	SIZE	STANDARD PACK		RATE Pc
		OD (mm)	Pc./Box	Pc./Carton	
215	PRLB 20E	20	24	384	29.75

## COUPLER



SR. NO.	PRODUCT CODE	SIZE	STANDARD PACK		RATE Pc
		OD (mm)	Pc./Box	Pc./Carton	
216	PCR 19	19	100	2000	5.25
217	PCR 20	20	100	2000	6.00
218	PCR 20 L	20 Long	150	2400	6.50
219	PCR 25	25	100	2000	8.00
220	PCR 32	32	60	960	14.00
221	PCR 40	40	30	480	24.00
222	PCR 50	50	20	320	41.00

## EXPANSION COUPLER



SR. NO.	PRODUCT CODE	SIZE	STANDARD PACK		RATE Pc
		OD (mm)	Pc./Box	Pc./Carton	
223	PCR 20E	20	20	600	8.00
224	PCR 25E	25	12	360	14.00
225	PCR 32E	32	8	240	25.25
226	PCR 50E	50	10	160	45.75

## (PIPE TO FITTING) REDUCER COUPLER



SR. NO.	PRODUCT CODE	SIZE	STANDARD PACK		RATE Pc
		OD (mm)	Pc./Box	Pc./Carton	
227	PRR1	25>20	250	4000	8.00

## (PIPE TO PIPE) REDUCER COUPLER



SR. NO.	PRODUCT CODE	SIZE	STANDARD PACK		RATE Pc
		OD (mm)	Pc./Box	Pc./Carton	
228	PRR 2520	25 > 20	70	1400	8.00
229	PRR 3220	32 > 20	60	1200	10.50
230	PRR 3225	32 > 25	40	800	14.00
231	PRR 4020	40 > 20	48	960	17.75
232	PRR 4032	40 > 32	32	640	19.75
233	PRR 5032	50 > 32	30	480	23.75
234	PRR 5040	50 > 40	30	480	24.00

# ROUND CONDUIT UPVC PIPE FITTINGS

HSN : 39174000



## SLIP TYPE BEND



SR. NO.	PRODUCT CODE	SIZE	STANDARD PACK		RATE Pc
		OD (mm)	Pc./Box	Pc./Carton	
235	PRBN 19	19	65	1040	8.75
236	PRBN 20	20	65	1040	9.25
237	PRBN 25	25	35	560	15.00
238	PRBN 32	32	20	320	40.00
239	PRBN 40	40	10	160	80.75
240	PRBN 50	50	5	80	109.50

## SLIP TYPE LONG BEND



SR. NO.	PRODUCT CODE	SIZE	STANDARD PACK		RATE Pc
		OD (mm)	Pc./Box	Pc./Carton	
241	PRBL 20	20	45	720	14.00
242	PRBL 25	25	20	320	23.25
243	PRBL 32	32	10	160	55.25
244	PRBL 40	40	-	80	108.25
245	PRBL 50	50	-	55	163.00

## SPACE BAR SADDLE



SR. NO.	PRODUCT CODE	SIZE	STANDARD PACK		RATE Pc
		OD (mm)	Pc./Box	Pc./Carton	
246	PRBS 19	19	100	2000	7.50
247	PRBS 20	20	100	2000	8.00
248	PRBS 25	25	100	2000	9.75
249	PRBS 32	32	100	1600	16.75
250	PRBS 40	40	80	1280	18.50
251	PRBS 50	50	60	960	22.25
252	PRBS 63	63	-	50	29.00

## SADDLE STRAP



SR. NO.	PRODUCT CODE	SIZE	STANDARD PACK		RATE Pc
		OD (mm)	Pc./Box	Pc./Carton	
253	PRSS 19	19	100	2000	4.50
254	PRSS 20	20	100	2000	4.75
255	PRSS 25	25	100	2000	6.50
256	PRSS 32	32	100	1600	7.50
257	PRSS 40	40	80	1280	9.75
258	PRSS 50	50	60	960	13.00

(POLYPROPYLENE)

## SELF LOCKING SADDLE CLIP



SR. NO.	PRODUCT CODE	SIZE	STANDARD PACK		RATE Pc
		OD (mm)	Pc./Box	Pc./Carton	
259	PPSC20SL	20	75	450	6.50
260	PPSC25SL	25	50	300	7.50

## ROUND 'U' CLIP



SR. NO.	PRODUCT CODE	SIZE	STANDARD PACK		RATE Pc
		OD (mm)	Pc./Box	Pc./Carton	
261	PRUC 20	20	200	4000	8.25
262	PRUC 25	25	100	3000	13.00

## END CAP



SR. NO.	PRODUCT CODE	SIZE	STANDARD PACK		RATE Pc
		OD (mm)	Pc./Box	Pc./Carton	
263	PREC 20	20	150	3000	3.25
264	PREC 25	25	100	2000	5.25
265	PREC 32	32	70	1400	6.50
266	PREC 40	40	32	640	12.25
267	PREC 50	50	24	480	17.50

## MALE BUSH ADAPTOR



SR. NO.	PRODUCT CODE	SIZE	STANDARD PACK		RATE Pc
		OD (mm)	Pc./Box	Pc./Carton	
268	PMBA 19	19	100	2000	8.00
269	PMBA 20	20	100	2000	8.75
270	PMBA 25	25	100	2000	10.25

## FEMALE BUSH ADAPTOR



SR. NO.	PRODUCT CODE	SIZE	STANDARD PACK		RATE Pc
		OD (mm)	Pc./Box	Pc./Carton	
271	PFBA 19	19	100	2000	8.00
272	PFBA 20	20	100	2000	8.75
273	PFBA 25	25	100	2000	11.00
274	PFBA 32	32	75	1200	16.75
275	PFBA 40	40	50	800	22.50
276	PFBA 50	50	25	400	38.00

## ROUND ELBOW



SR. NO.	PRODUCT CODE	SIZE	STANDARD PACK		RATE Pc
		OD (mm)	Pc./Box	Pc./Carton	
277	PRE 20	20	125	2500	8.00
278	PRE 25	25	75	1200	11.00
279	PRE 32	32	20	400	15.25
280	PRE 40	40	15	300	23.50
281	PRE 50	50	10	200	37.75



# ROUND CONDUIT uPVC PIPE FITTINGS

HSN : 39174000



## ROUND TEE



SR. NO.	PRODUCT CODE	SIZE	STANDARD PACK		RATE Pc
		OD (mm)	Pc./Box	Pc./Carton	
282	PRT 20	20	50	1500	13.25
283	PRT 25	25	50	800	16.50
284	PRT 32	32	15	300	18.75
285	PRT 40	40	10	200	28.00
286	PRT 50	50	10	160	44.25

## INSPECTION ELBOW



SR. NO.	PRODUCT CODE	SIZE	STANDARD PACK		RATE Pc
		OD (mm)	Pc./Box	Pc./Carton	
287	PIE 20	20	20	600	34.25
288	PIE 25	25	20	400	42.75

## INSPECTION TEE



SR. NO.	PRODUCT CODE	SIZE	STANDARD PACK		RATE Pc
		OD (mm)	Pc./Box	Pc./Carton	
289	PIT 20	20	20	600	33.75
290	PIT 25	25	20	400	50.25

## INSPECTION BEND



SR. NO.	PRODUCT CODE	SIZE	STANDARD PACK		RATE Pc
		OD (mm)	Pc./Box	Pc./Carton	
291	PIB 20	20	20	600	34.00
292	PIB 25	25	20	400	50.00

## ADAPTABLE BOX WITH LID



SR. NO.	PRODUCT CODE	SIZE	STANDARD PACK		RATE Pc
		OD (mm)	Pc./Box	Pc./Carton	
243	PAB 75L	3" x 3" x 2"	10	200	73.00
		75x75x50			
294	PAB 110L	4" x 4" x 3"	-	100	144.00
		110x110x75			
295	PAB 160L	6" x 4" x 3"	-	75	291.00
		160x110x75			
296	PAB 160SL	6" x 6" x 3"	-	50	318.25
		160x160x75			
297	PAB 225SL	9" x 9" x 3"	-	20	687.75
		225x225x75			
298	PAB 300SL	12" x 12" x 4"	-	5	1454.25
		300x300x110			

(WHITE)

## SURFACE SWITCH BOX



SR. NO.	PRODUCT CODE	SIZE	STANDARD PACK		RATE Pc
		OD (mm)	Pc./Box	Pc./Carton	
299	PSB1	3" x 3"	10	300	46.00
300	PSB2	6" x 3"	10	200	78.75

(WHITE)

## SWITCH BOX LID



SR. NO.	PRODUCT CODE	SIZE	STANDARD PACK		RATE Pc
		OD (mm)	Pc./Box	Pc./Carton	
301	PSBL1 LID	3" x 3"	40	1200	20.00
302	PSBL2 LID	6" x 3"	25	750	27.00

(SWITCH BOX)

## FLUSH MOUNTED



SR. NO.	PRODUCT CODE	SIZE	STANDARD PACK		RATE Pc
		OD (mm)	Pc./Box	Pc./Carton	
303	PFSB1	3" x 3" x 2"	10	200	51.75
304	PFSB2	6" x 3" x 2"	10	160	69.50

(BLACK)

## FAN BOX



SR. NO.	PRODUCT CODE	SIZE	STANDARD PACK		RATE Pc
		OD (mm)	Pc./Box	Pc./Carton	
305	PRFB20	20 Standard	10	220	54.75
306	PRFB25	25 Standard	10	220	54.75
307	PRFB20SL	20 Large	10	140	74.25
308	PRFB25SL	25 Large	10	140	74.25
309	PRFBRD2025	20/25 with Rod	1	28	219.50
310	PRFBRD25	25 with Rod	1	28	219.50

## METAL FAN BOX WITH ROD (BROWN)



HSN : 73072900

SR. NO.	PRODUCT CODE	SIZE	STANDARD PACK	RATE Pc
		OD (mm)	Pc./Bag	
311	PMFB 2025	20/25	50	200.00

## uPVC SOLVENT CEMENT

HSN: 35061000



SR. NO.	PRODUCT CODE	SIZE	STANDARD PACK		RATE Pc
		(ml)	Colour	Pc./Box	
312	PSC100 ML	100ml	Transparent	24	144
313	PSC250 ML	250ml	Transparent	24	96
314	PSC500 ML	500ml	Transparent	12	48
315	PSC1L	1L	Transparent	6	24
316	PSC5L	5L	Transparent	-	6

## PVC ELECTRICAL INSULATION TAPE

HSN : 85469090



SR. NO.	PRODUCT CODE	SIZE	STANDARD PACK		RATE Pc
		W(mm)xL(Mtr)	Pc./Box	Pc./Carton	
317	PPIT 18	18x6	30	540	13.50

✖ 20mm Knockout Available    △ 32/38/40mm Knockout Available  
 ✖ 20/25 Knockout Available    ◇ 50mm Knockout Available

## ALL WEATHER BOXES

**Precision All Weather Boxes** are manufactured from high quality impact resistant Engineering Thermoplastics (Polycarbonate / ABS). The material itself is self-extinguishing and our specially developed formulation gives it special ability to withstand high temperatures. The product passes stringent IP 67 standard requirements which makes it suitable to use indoor and outdoor in harsh environment. Our specially made design gives it highest level of safety from unwanted ingress of oil / water / any other solid waste.



### APPLICATIONS

Enclosure boxes for electrical installations.  
Suitable for Outdoor / Indoor environment.

### FEATURES

- IP 67 compliance, suitable for Outdoor Installations (CIPET tested)
- Specially formulated Engineering Thermoplastic (Polycarbonate / ABS) gives temperature protection ranging from  $-40^{\circ}\text{C}$  to  $+90^{\circ}\text{C}$
- Weatherproof, Dust proof and Impact resistant
- Transparent lids ensure enhanced visibility
- Innovative design makes compatible for various types of Switchgears / Electrical components
- Body part with adequate molded markings for easy cable entry location from all sides
- Various sizes available as per individual choice
- Screws supplied are made up of anti-rust SS / Engineering Plastic for corrosion free working and durability as well.



# ALL WEATHER BOXES

IP 67 HSN : 85381010

GREY

## ALL WEATHER BOXES OPAQUE LID (ABS)

Sr No.	Product Code	Size (mm)	Standard Pack (Pc/Carton)	Rate (Pc)
318	PAB 8383OL	83 X 83 X 65	21	190.00
319	PAB 8888OL	88 X 88 X 53	27	199.00
320	PAB 9898OL	98 X 98 X 61	24	220.00
321	PAB 100100OL	100 X 100 X 65	21	221.00
322	PAB 13080OL	130 X 80 X 65	16	254.50
323	PAB 130130OL	130 X 130 X 80	16	377.00
324	PAB 139119OL	139 X 119 X 70	10	213.50
325	PAB 167125OL	167 X 125 X 82	12	265.00
326	PAB 18080OL	180 X 80 X 90	12	308.00
327	PAB 1801OL	180 X 130X 75	16	418.50
328	PAB 1802OL	180 X 130 X 100	12	423.00
329	PAB 180180OL	180 X 180 X 100	20	544.00
330	PAB 200160OL	200 X 160 X 98	8	417.50
331	PAB 210190OL	210 X 190 X 100	6	625.50
332	PAB 27080OL	270 X 80 X 90	12	378.00
333	PAB 280190OL	280 X 190 X 130	4	775.00
334	PAB 280280OL	280 X 280 X 130	2	1093.00
335	PAB 380190OL	380 X 190 X 130	3	1002.50
336	PAB 380280OL	380 X 280 X 130	2	1424.00
337	PAB 560380OL	560 X 380 X 180	2	3317.00

⊗ With Knockout

## ALL WEATHER BOXES TRANSPARENT LID (ABS)

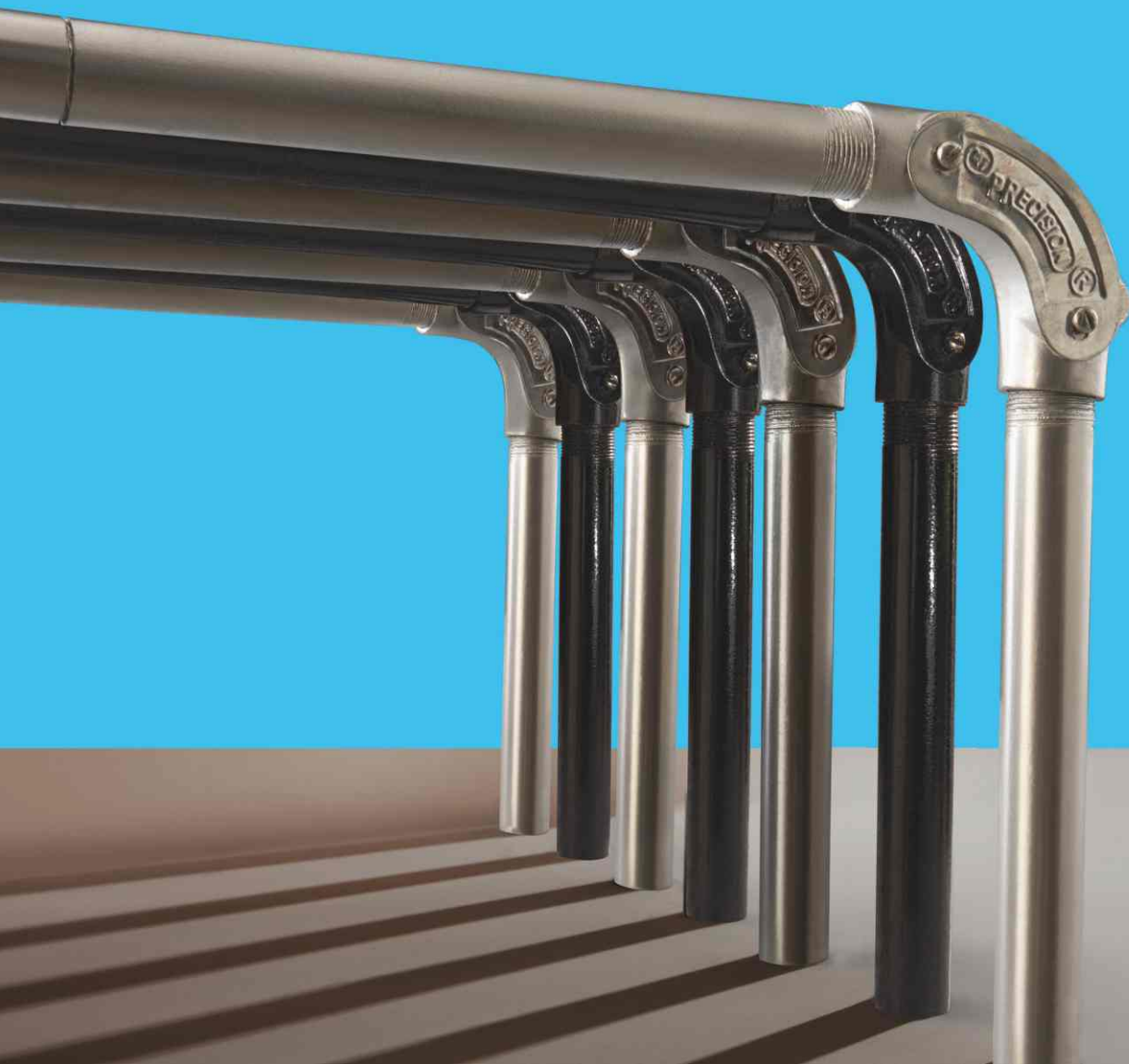
Sr No.	Product Code	Size (mm)	Standard Pack (Pc/Carton)	Rate (Pc)
338	PAB 18080TL	180 X 80 X 90	12	356.00
339	PAB 27080TL	270 X 80 X 90	12	443.50
340	PAB 180130TL	180 X 130 X 100	12	431.50
341	PAB 180180TL	180 X 180 X 100	20	559.50
342	PAB 210190TL	210 X 190 X 100	6	651.00
343	PAB 280190TL	280 X 190 X 130	4	843.50
344	PAB 280280TL	280 X 280 X 130	2	1145.00
345	PAB 380190TL	380 X 190 X 130	3	1145.00
346	PAB 380280TL	380 X 280 X 130	2	1660.00
347	PAB 560380TL	560 X 380 X 180	2	3782.00

## PG GLANDS (PP)

Sr No.	Product Code	Size (mm)	Standard Pack (Pc/Carton)	Rate (Pc)
348	PPPG 7GL	7	600	5.00
349	PPPG 9GL	9	320	6.50
350	PPPG 11GL	11	240	7.00
351	PPPG 13.5GL	13.5	300	7.00
352	PPPG 16GL	16	240	7.00
353	PPPG 19GL	19	180	10.00
354	PPPG 21GL	21	120	11.50
355	PPPG 25GL	25	120	14.50

## G.I & M.S. CONDUIT PIPES & FITTINGS

**Precision G.I & M.S. Conduit Pipes** are manufactured from rigorously tested raw material, in accordance with IS 9537 Part – 2. G.I. Conduit Pipes are coated at a hot dipped galvanising plant in which iron or steel is coated with a layer of zinc. This coating makes the conduit safe and durable for industrial installations, coastal line atmosphere & thermal power stations. M.S. Conduit Pipes are treated and coated with paint.



## Applications

Channelising electrical surface wiring and cable ducting.

## Features



Anti - Rust Coat



Good Finish



Easy to cut



High resistance  
to Corrosion



### DIMENSIONS OF G.I. & M.S. CONDUIT PIPES

NORMAL SIZE	OUTSIDE DIAMETER	TOLERANCE OD	WALL THICKNESS	WALL THICKNESS TOLERANCE
MM	MM	MM	MM	MM
20	20	0 -0.3	1.60	±0.2
25	25	0 -0.4	1.60	±0.2
32	32	0 -0.4	1.60	±0.2
40	40	0 -0.4	2.00	+0.2 -0.4
50	50	0 -0.5	2.00	+0.2 -0.4



## G.I. & M.S. CONDUIT PIPES

HSN : 73069090



COLOUR : SILVER

### G.I. CONDUIT PIPES



SR. NO.	PRODUCT CODE	SIZE	STANDARD PACK		RATE (Mtr)
		OD (mm)	Pc./Mtr	Mtr./Bdl.	
356	PGIC 20	20	26 x 3m	78	231.00
357	PGIC 25	25	21 x 3m	63	280.00
358	PGIC 32	32	16 x 3m	48	420.00
359	PGIC 40	40	10 x 3m	30	665.00
360	PGIC 50	50	5 x 3m	15	755.00

COLOUR : BLACK

### M.S. CONDUIT PIPES



SR. NO.	PRODUCT CODE	SIZE	STANDARD PACK		RATE (Mtr)
		OD (mm)	Pc./Mtr	Mtr./Bdl.	
361	PMSC 20	20	26 x 3m	78	145.00
362	PMSC 25	25	21 x 3m	63	185.00
363	PMSC 32	32	16 x 3m	48	260.00
364	PMSC 40	40	10 x 3m	30	435.00
365	PMSC 50	50	5 x 3m	15	570.00

## G.I. & M.S. CONDUIT PIPE FITTINGS

HSN : 73269099



### CIRCULAR BOX WITH LID AND SCREW

TERMINAL -1 WAY (SCREW TYPE)

### G.I. CIRCULAR BOX



SR. NO.	PRODUCT CODE	SIZE	STANDARD PACK		RATE Pc
		OD (mm)	Pc./Box	Pc./Carton	
366	PGIB 251	25	20	200	80.00

TERMINAL -1 WAY (SCREW TYPE)

### M.S. CIRCULAR BOX



SR. NO.	PRODUCT CODE	SIZE	STANDARD PACK		RATE Pc
		OD (mm)	Pc./Box	Pc./Carton	
367	PMSB 201	20	20	200	54.00
368	PMSB 251	25	20	200	60.00



# G.I. & M.S. CONDUIT PIPE FITTINGS

HSN : 73269099



THROUGH - 2 WAY (SCREW TYPE)

## G.I. CIRCULAR BOX



SR. NO.	PRODUCT CODE	SIZE	STANDARD PACK		RATE
		OD (mm)	Pc./Box	Pc./Carton	Pc
369	PGIB 252S	25	20	200	83.50

INTERSECTION - 4 WAY  
(SCREW TYPE)

## M.S. CIRCULAR BOX



SR. NO.	PRODUCT CODE	SIZE	STANDARD PACK		RATE
		OD (mm)	Pc./Box	Pc./Carton	Pc
376	PMSB 204	20	20	200	65.50
377	PMSB 254	25	20	200	71.50

THROUGH - 2 WAY (SCREW TYPE)

## M.S. CIRCULAR BOX



SR. NO.	PRODUCT CODE	SIZE	STANDARD PACK		RATE
		OD (mm)	Pc./Box	Pc./Carton	Pc
370	PMSB 202S	20	20	200	65.50
371	PMSB 252S	25	20	200	68.00

THREAD TYPE

## G.I. INSPECTION BEND



SR. NO.	PRODUCT CODE	SIZE	STANDARD PACK		RATE
		OD (mm)	Pc./Box	Pc./Carton	Pc
378	PGI 25IBT	25	20	200	84.00

TEE - 3 WAY (SCREW TYPE)

## G.I. CIRCULAR BOX



SR. NO.	PRODUCT CODE	SIZE	STANDARD PACK		RATE
		OD (mm)	Pc./Box	Pc./Carton	Pc
372	PGIB 253	20	20	200	88.00

THREAD TYPE

## M.S. INSPECTION BEND



SR. NO.	PRODUCT CODE	SIZE	STANDARD PACK		RATE
		OD (mm)	Pc./Box	Pc./Carton	Pc
379	PMS 25IBT	25	20	200	64.00

TEE - 3 WAY (SCREW TYPE)

## M.S. CIRCULAR BOX



SR. NO.	PRODUCT CODE	SIZE	STANDARD PACK		RATE
		OD (mm)	Pc./Box	Pc./Carton	Pc
373	PMSB 203	20	20	200	65.50
374	PMSB 253	25	20	200	71.50

SCREW TYPE

## M.S. INSPECTION BEND



SR. NO.	PRODUCT CODE	SIZE	STANDARD PACK		RATE
		OD (mm)	Pc./Box	Pc./Carton	Pc
380	PMS 20IBS	20	20	200	62.00
381	PMS 25IBS	25	20	200	64.00

INTERSECTION - 4 WAY  
(SCREW TYPE)

## G.I. CIRCULAR BOX



SR. NO.	PRODUCT CODE	SIZE	STANDARD PACK		RATE
		OD (mm)	Pc./Box	Pc./Carton	Pc
375	PGIB 254	25	20	200	92.00

INTERNAL THREAD

## M.S. NORMAL BEND



SR. NO.	PRODUCT CODE	SIZE	STANDARD PACK		RATE
		OD (mm)	Pc./Box	Pc./Carton	Pc
382	PMS 25NBIT	25	12	144	108.50

## uPVC MINI/MAXI TRUNKING PROFILE & FITTINGS

### Precision uPVC Mini/Maxi Trunking Profile and Fittings

are manufactured from high impact unplasticised polyvinyl chloride (uPVC) grade material capable of withstanding the most hazardous conditions on-site and exceeds the most stringent requirements of Indian and International standards.

The product range brings a whole new world of sophistication and convenience to home, office and commercial establishments and is in accordance with BS EN 50085-2-1.

Mini Trunking Profile are also available with self-fixing tape for instant and easy installation. Clip on lid provides security while allowing easy maintenance.

Precision uPVC Maxi Trunking Profile Cable Management System is designed for convenience and safety with compartments for separate wiring applications.

Maxi Trunking Profile Fittings are available in moulded and fabricated form, thus adding a sleek touch to your interiors.

### APPLICATIONS

To organize and protect cables on surface.



Easy and quick  
installation



Secure &  
Elegant look



Various Diameters  
& Grades



Durable & Impact  
Resistant



Fire retardant



Thermal resistant  
(-5° C to +60° C)



# UPVC MINI / MAXI TRUNKING PROFILE

CE FR HSN: 39162019



IVORY/WHITE

## UPVC MINI TRUNKING PROFILE



SR. NO.	PRODUCT CODE	SIZE (WxH)	STANDARD PACK		RATE (Mtr)
		(mm)	Pc./Mtr	Mtr / Bdl	
383	PT2012	20 x 12	100 x 2m	200	23.00
384	PT2512	25 x 12	100 x 2m	200	27.25
385	PT3015	30 x 15	100 x 2m	200	29.00
386	PT3212	32 x 12	100 x 2m	200	34.00
387	PT3212SPL	32 x 12	100 x 2m	200	28.25
388	PT1616	16 x 16	100 x 2m	200	22.00
389	PT2516	25 x 16	100 x 2m	200	32.75
390	PT2516SPL	25 x 16	100 x 2m	200	27.25
391	PT3216	32 x 16	100 x 2m	200	30.25
392	PT3816	38 x 16	50 x 2m	100	53.25
393	PT3825	38 x 25	50 x 2m	100	60.25
394	PT3838	38 x 38	25 x 2m	50	79.75
395	PT5016	50 x 16	50 x 2m	100	92.25

# Special Size

∞ 100 x 50

WHITE

## UPVC MAXI TRUNKING PROFILE



SR. NO.	PRODUCT CODE	SIZE (WxH)	STANDARD PACK		RATE (Mtr)
		(mm)	Pc./Mtr	Mtr / Bdl	
396	PT5050	50 x 50	20 x 2m	40	155.25
397	PT7550	75 x 50	12 x 2m	24	376.25
398	PT7575	75 x 75	9 x 2m	18	492.00
399	PT10050	100 x 50	10 x 2m	20	612.75
400	PT100100	100 x 100	6 x 2m	12	785.50
401	PT15050	150 x 50	5 x 2m	10	932.50
402	PT150100	150 x 100	4 x 2m	8	1134.75

WHITE

## UPVC MAXI TRUNKING PROFILE DIVIDER



SR. NO.	PRODUCT CODE	SIZE (WxH)	STANDARD PACK		RATE (Mtr)
		(mm)	Pc./Mtr	Mtr / Bdl	
403	PMTD	Standard	50 x 2m	100	84.00

# UPVC MINI / MAXI TRUNKING PROFILE FITTINGS (MOULDED)

HSN: 39174000



## COUPLER



SR. NO.	PRODUCT CODE	SIZE (W x H) (mm)	STANDARD PACK Pc./Box	RATE Pc
404	PTC 2012	20 x 12	100	3.25
405	PTC 2512	25 x 12	100	2.50
406	PTC 3212	32 x 12	100	2.50
407	PTC 1616	16 x 16	100	3.25
408	PTC 3816	38 x 16	50	5.25
409	PTC 3825	38 x 25	50	6.50
410	PTC 10050	100 x 50(W)	10	15.50

## TEE



SR. NO.	PRODUCT CODE	SIZE (W x H) (mm)	STANDARD PACK Pc./Box	RATE Pc
418	PTT 2012	20 x 12	100	5.25
419	PTT 2512	25 x 12	50	4.75
420	PTT 3212	32 x 12	50	6.50
421	PTT 1616	16 x 16	100	5.25
422	PTT 3816	38 x 16	50	7.75
423	PTT 3825	38 x 25	50	9.25
424	PTT 10050	100 x 50(W)	10	61.00

## ELBOW



SR. NO.	PRODUCT CODE	SIZE (W x H) (mm)	STANDARD PACK Pc./Box	RATE Pc
411	PTB 2012	20 x 12	100	4.75
412	PTB 2512	25 x 12	100	3.25
413	PTB 3212	32 x 12	100	5.25
414	PTB 1616	16 x 16	100	3.25
415	PTB 3816	38 x 16	100	6.50
416	PTB 3825	38 x 25	100	8.00
417	PTB 10050	100 x 50(W)	10	64.75

## INTERNAL BEND



SR. NO.	PRODUCT CODE	SIZE (W x H) (mm)	STANDARD PACK Pc./Box	RATE Pc
425	PTI 2512	25 x 12	100	2.00
426	PTI 3212	32 x 12	100	3.25
427	PTI 1616	16 x 16	100	3.25
428	PTI 3816	38 x 16	100	5.25
429	PTI 3825	38 x 25	50	7.00
430	PTI 10050	100 x 50(W)	10	24.75

## uPVC MINI / MAXI TRUNKING PROFILE FITTINGS (MOULDED)

HSN: 39174000

IVORY

WHITE

### EXTERNAL BEND



SR. NO.	PRODUCT CODE	SIZE (W x H) (mm)	STANDARD PACK Pc./Box	RATE Pc
431	PTE 2512	25 x 12	100	2.00
432	PTE 3212	32 x 12	100	4.75
433	PTE 1616	16 x 16	100	5.25
434	PTE 3816	38 x 16	100	6.50
435	PTE 3825	38 x 25	50	9.50
436	PTE 10050	100 x 50(W)	10	44.50

### 4 - WAY



SR. NO.	PRODUCT CODE	SIZE (W x H) (mm)	STANDARD PACK Pc./Box	RATE Pc
437	PTW3212	32 x 12	50	10.50

### END CAP



SR. NO.	PRODUCT CODE	SIZE (W x H) (mm)	STANDARD PACK Pc./Box	RATE Pc
438	PMTC 100	100 x 50(W)	50	13.75

- ABS

### (POLY PROPYLENE) JUNCTION LINKER



SR. NO.	PRODUCT CODE	SIZE (W x H) (mm)	STANDARD PACK Pc./Bag	Pc./Carton	RATE Pc
439	PTJL7575	Standard	20	300	8.00

### TRUNKING KNOCKOUT SURFACE SWITCH BOX



SR. NO.	PRODUCT CODE	SIZE (W x H) (mm)	STANDARD PACK Pc./Box	Pc./Carton	RATE Pc
440	PTSB1	3"x3" (W)	10	300	45.50
441	PTSB2	6"x3" (W)	10	200	75.25

\$ 16 x 16, 25 x 16 Knockout Available  
(W) - White

## uPVC MINI / MAXI TRUNKING PROFILE FITTINGS (FABRICATED)

HSN: 39174000

WHITE

### ELBOW



SR. NO.	PRODUCT CODE	SIZE (W x H) (mm)	STANDARD PACK Pc./Bag	RATE Pc
442	PMTL50	50 x 50	5	89.50
443	PMTL751	75 x 50	5	214.25
444	PMTL752	75 x 75	5	255.25
445	PMTL1002	100 x 100	5	366.50
446	PMTL1501	150 x 50	5	346.50

### TEE



SR. NO.	PRODUCT CODE	SIZE (W x H) (mm)	STANDARD PACK Pc./Bag	RATE Pc
447	PMTT50	50 x 50	5	126.00
448	PMTT751	75 x 50	5	214.25
449	PMTT752	75 x 75	5	255.25
450	PMTT1002	100 x 100	5	366.50
451	PMTT1501	150 x 50	5	346.50

### INTERNAL ANGLE



SR. NO.	PRODUCT CODE	SIZE (W x H) (mm)	STANDARD PACK Pc./Bag	RATE Pc
452	PMTI50	50 x 50	5	89.50
453	PMTI751	75 x 50	5	214.25
454	PMTI752	75 x 75	5	255.25
455	PMTI1002	100 x 100	5	366.50
456	PMTI1501	150 x 50	5	346.50

### EXTERNAL ANGLE



SR. NO.	PRODUCT CODE	SIZE (W x H) (mm)	STANDARD PACK Pc./Bag	RATE Pc
457	PMTE50	50 x 50	5	89.50
458	PMTE751	75 x 50	5	214.25
459	PMTE752	75 x 75	5	255.25
460	PMTE1002	100 x 100	5	366.50
461	PMTE1501	150 x 50	5	346.50

### END CAP



SR. NO.	PRODUCT CODE	SIZE (W x H) (mm)	STANDARD PACK Pc./Bag	RATE Pc
462	PFTC50	50 x 50	5	25.25
463	PFTC751	75 x 50	5	34.75
464	PFTC752	75 x 75	5	40.25
465	PFTC1002	100 x 100	5	84.75
466	PFTC1501	150 x 50	5	93.00

## METALLIC CABLE MANAGEMENT SYSTEM



Precision after serving India and overseas markets all these years in routing wires through our conduits, we have launched metallic cable management system to route HT/ LT/ LV cables through our Perforated, Ladder & Trunking cable tray with accessories.

**It comes in 3 major categories as follows:**

- a) Trunking Cable Tray (TCT) and Fittings
- b) Perforated Cable Tray (PCT) and Fittings
- c) Ladder Cable Tray (LCT) and Fittings

**All above categories are further divided in various finishes such as:**

- i) Hot Dip Galvanized (HDG)
- ii) Powder Coated (PC)
- iii) Enamel Painted (EP)
- iv) Pre-Galvanized Sheets (PG)

**APPLICATIONS**

Metallic Cable Management System for HT/ LT/ LV cables suitable for Indoor and Outdoor environment.

**FEATURES**

- Available in different Thicknesses ranging from 1.6 mm to 3.0 mm
- Various Width x Height sizes available to make cost effective
- Choice of Finishes / Raw Materials available as per individual requirements
- Available in standard length of 2.5 Mtr
- Once fixed, it is absolutely Maintenance Free
- Availability of lids makes it easy to open in case of future work at later stage
- All raw material used is of IS grade
- Complimentary 2 nos of Coupler Plates & Nut-Bolts with each Cable Tray
- Suitable Fittings available in all categories of Cable Tray
- Hot dip Galvanizing comes with 65  $\mu$ m as standard Zinc coating. For humid and corrosive environment 80/120  $\mu$ m coating is also available as per requirements.



# METALLIC CABLE MANAGEMENT SYSTEM

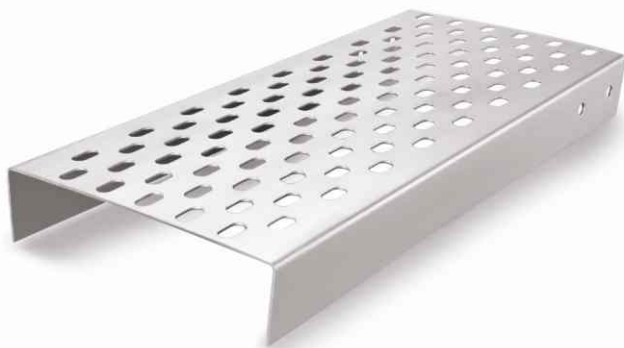
HSN : 73089090

## TRUNKING CABLE TRAY (TCT)



Sr No.	SIZE W x H (mm)	COVER W x H (mm)	Standard Length (Mtr)	Standard Pack (Pc)
467	50 x 38	55 x 12	2.5	1
468	50 x 50	55 x 12	2.5	1
469	100 x 50	105 x 12	2.5	1
470	150 x 50	155 x 12	2.5	1
471	200 x 50	205 x 12	2.5	1
472	300 x 50	305 x 12	2.5	1
473	450 x 50	455 x 12	2.5	1
474	600 x 50	605 x 12	2.5	1
475	100 x 70	105 x 12	2.5	1
476	150 x 75	155 x 12	2.5	1
477	200 x 75	205 x 12	2.5	1
478	300 x 75	305 x 12	2.5	1
479	450 x 75	455 x 12	2.5	1
480	600 x 75	605 x 12	2.5	1

## PERFORATED CABLE TRAY (PCT)



## ACCESSORIES FOR TRUNKING CABLE TRAY (TCT)



Sr No	Fitting	Type	Standard Pack (Pc)
481	45° Bend	Horizontal	1
482	45° Bend	Vertical	1
483	90° Bend	Horizontal	1
484	90° Bend	Vertical	1
485	Tee joint	Equal	1
486	Tee joint	Unequal	1
487	Reducer joint	Concentric	1
488	Reducer joint	Eccentric	1
489	4 way Cross joint	Equal	1
490	4 way Cross joint	Unequal	1

**All above sizes are available:**

In 1.60mm, 2.0 mm, 2.50mm and 3.0mm thickness also.

In HR / CRCA / Pre - Galvanised / Aluminum material also.

In Hot dip Galvanised / Powder Coated / Painted / Pre - Galvanised finishes also.

All above fittings are available for TCT range from 50 x 38 mm to 600 x 75 mm.

Sr No	Size W x H (mm)	Standard Length (Mtr)	Standard Pack (Pc)
491	50 x 50	2.5	1
492	100 x 50	2.5	1
493	150 x 50	2.5	1
494	200 x 50	2.5	1
495	300 x 50	2.5	1
496	450 x 50	2.5	1
497	600 x 50	2.5	1
498	100 x 75	2.5	1
499	150 x 75	2.5	1
500	200 x 75	2.5	1
501	300 x 75	2.5	1
502	450 x 75	2.5	1
503	600 x 75	2.5	1
504	150 x 100	2.5	1
505	200 x 100	2.5	1
506	300 x 100	2.5	1
507	450 x 100	2.5	1
508	600 x 100	2.5	1

# METALLIC CABLE MANAGEMENT SYSTEM

HSN : 73089090

## ACCESSORIES FOR PERFORATED CABLE TRAY (PCT)



Sr No	Fitting	Type	Standard Pack (Pc)
509	45° Bend	Horizontal	1
510	45° Bend	Vertical	1
511	90° Bend	Horizontal	1
512	90° Bend	Vertical	1
513	Tee joint	Equal	1
514	Tee joint	Unequal	1
515	Reducer joint	Concentric	1
516	Reducer joint	Eccentric	1
517	4 way Cross joint	Equal	1
518	4 way Cross joint	Unequal	1

### All above sizes are available:

In 1.60mm, 2.0 mm, 2.50mm and 3.0mm thickness also.

In HR / CRCA / Pre - Galvanised / Aluminum material also.

In Hot dip Galvanised / Powder Coated / Painted / Pre - Galvanised finishes also.

Covers are available for Perforated Cable Tray also.

All above fittings are available for PCT range from 50 x 50 mm to 600 x 100 mm.



## LADDER CABLE TRAY (LCT)

Sr No	Size W x H (mm)	Standard Length (Mtr)	Standard Pack (Pc)
519	100 x 50	2.5	1
520	150 x 50	2.5	1
521	200 x 50	2.5	1
522	300 x 50	2.5	1
523	450 x 50	2.5	1
524	600 x 50	2.5	1
525	750 x 50	2.5	1
526	900 x 50	2.5	1
527	1000 x 50	2.5	1
528	100 x 75	2.5	1
529	150 x 75	2.5	1
530	200 x 75	2.5	1
531	300 x 75	2.5	1
532	450 x 75	2.5	1
533	600 x 75	2.5	1
534	750 x 75	2.5	1

Sr No	Size W x H (mm)	Standard Length (Mtr)	Standard Pack (Pc)
535	900 x 75	2.5	1
536	1000 x 75	2.5	1
537	1200 x 75	2.5	1
538	1500 x 75	2.5	1
539	150 x 100	2.5	1
540	200 x 100	2.5	1
541	300 x 100	2.5	1
542	450 x 100	2.5	1
543	600 x 100	2.5	1
544	750 x 100	2.5	1
545	900 x 100	2.5	1
546	1000 x 100	2.5	1
547	1200 x 100	2.5	1
548	1500 x 100	2.5	1

# METALLIC CABLE MANAGEMENT SYSTEM

HSN : 73089090

## ACCESSORIES FOR LADDER CABLE TRAY (LCT)



Sr No	Fitting	Type	Standard Pack (pc)
549	45° Bend	Horizontal	1
550	45° Bend	Vertical	1
551	90° Bend	Horizontal	1
552	90° Bend	Vertical	1
553	Tee joint	Equal	1
554	Tee joint	Unequal	1
555	Reducer joint	Concentric	1
556	Reducer joint	Eccentric	1
557	4 way Cross joint	Equal	1
558	4 way Cross joint	Unequal	1

All above sizes are available:

In 1.60mm, 2.0 mm, 2.50mm and 3.0mm thickness also.

In HR / CRCA / Pre - Galvanised / Aluminum material also.

In Hot dip Galvanised / Powder Coated / Painted / Pre - Galvanised finishes also.

Covers are available for Ladder Cable Tray also.

All above fittings are available for LCT range from 100 x 50 mm to 1500 x 100 mm



## SLOTTED L SECTION

Sr No	Size (mm)	Standard Length (Mtr)	Standard Pack (Pc)
559	25 x 25	2.5	1
560	25 x 30	2.5	1
561	25 x 35	2.5	1
562	30 x 30	2.5	1
563	30 x 35	2.5	1
564	30 x 40	2.5	1
565	30 x 45	2.5	1
566	35 x 30	2.5	1
567	35 x 35	2.5	1
568	30 x 40	2.5	1
569	40 x 35	2.5	1
570	40 x 40	2.5	1
571	40 x 45	2.5	1
572	40 x 50	2.5	1
573	45 x 45	2.5	1
574	45 x 50	2.5	1
575	50 x 50	2.5	1

## SLOTTED C SECTION



Sr No	Size (mm)	Standard Length (Mtr)	Standard Pack (Pc)
576	15 x 30 x 15	2.5	1
577	15 x 35 x 15	2.5	1
578	20 x 35 x 20	2.5	1
579	25 x 35 x 25	2.5	1
580	15 x 40 x 15	2.5	1
581	20 x 40 x 20	2.5	1
582	25 x 40 x 25	2.5	1
583	15 x 50 x 15	2.5	1
584	20 x 50 x 20	2.5	1
585	25 x 50 x 25	2.5	1



## SLOTTED Z SECTION

Sr No	Size (mm)	Standard Length (Mtr)	Standard Pack (Pc)
586	25 x 25 x 25	2.5	1
587	25 x 30 x 25	2.5	1
588	30 x 30 x 30	2.5	1
589	30 x 35 x 30	2.5	1
590	30 x 40 x 30	2.5	1
591	30 x 50 x 30	2.5	1
592	35 x 30 x 35	2.5	1
593	35 x 35 x 35	2.5	1
594	35 x 40 x 35	2.5	1
595	35 x 50 x 35	2.5	1
596	40 x 35 x 40	2.5	1
597	40 x 40 x 40	2.5	1
598	45 x 40 x 45	2.5	1
599	45 x 45 x 45	2.5	1
600	45 x 50 x 45	2.5	1
601	50 x 45 x 50	2.5	1
602	50 x 50 x 50	2.5	1

All above sizes are available:

In 1.60mm, 2.0 mm, 2.50mm and 3.0mm thickness also.

In HR / CRCA / Pre - Galvanised / Aluminum material also.

In Hot dip Galvanised / Powder Coated / Painted / Pre - Galvanised finishes also.



## uPVC PANEL TRUNKING

**Precision uPVC Panel Trunking** is manufactured from high impact unplasticised polyvinyl chloride (uPVC) to ensure panel & machinery safety in extreme conditions. These trunkings are ideal to channelise medium, big size panels & various applications where economy, space saving, safety and durability are paramount.

### APPLICATIONS

To conduct, organise and protect cables inside electrical and telecommunication panels, industrial machinery wiring, computer LAN wiring and data centers.

### FEATURES



Fire retardant



Thermal resistant  
(-5° C to +60° C)



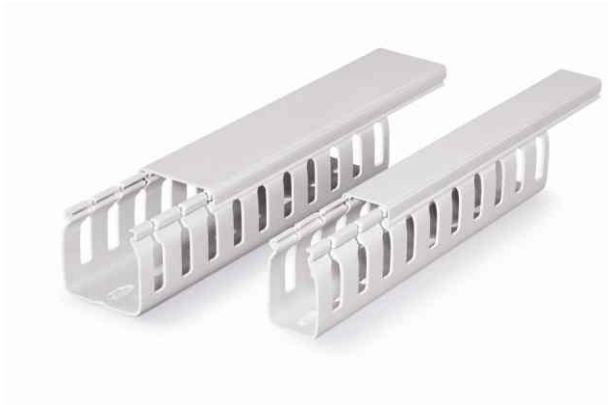
High Tensile  
Strength  
(390 kg/cm<sup>2</sup>)

- Non-brittle, wrap proof.
- Vertical slides and detachable strips facilitates systematic wiring, permits faster connections, additions and fault tracing of wires.
- Avoids bunching, taping, and provides complete electrical insulation.
- Unique cover locking design prevents popping of wires while removing cover
- Elongated slots at bottom allows flexible mounting.



# UPVC PANEL TRUNKING ≈ FRLS C €

HSN : 85381010



## STANDARD SLOT UPVC PANEL TRUNKING

SR. NO.	PRODUCT CODE	SIZE	STANDARD PACK		RATE (Mtr)
		H x W(mm)	Pc/Mtr	Mtr/Carton	
603	PPT1515	15 x 15	200 x 1m	200	47.75
604	PPT2525	25 x 25	130 x 1m	130	72.50
605	PPT3025	30 x 25	125 x 1m	125	77.25
606	PPT4525	45 x 25	90 x 1m	90	95.25
607	PPT4545	45 x 45	50 x 1m	50	131.25
608	PPT4560	45 x 60	50 x 1m	50	170.00
609	PPT6025	60 x 25	70 x 1m	70	121.50
610	PPT6040	60 x 40	60 x 1m	60	152.25
611	PPT6045	60 x 45	50 x 1m	50	153.50
612	PPT6060	60 x 60	40 x 1m	40	192.00
613	PPT7525	75 x 25	60 x 1m	60	154.50
614	PPT7575	75 x 75	30 x 1m	30	282.50
615	PPT10075	100 x 75	24 x 1m	24	464.50
616	PPT100100	100 x 100	16 x 1m	16	549.25



## THIN SLOT UPVC PANEL TRUNKING

SR. NO.	PRODUCT CODE	SIZE	STANDARD PACK		RATE (Mtr)
		H x W(mm)	Pc/Mtr	Mtr/Carton	
617	PPT3025TS	30 x 25	125 x 1m	125	80.75
618	PPT4525TS	45 x 25	90 x 1m	90	99.25
619	PPT4545TS	45 x 45	50 x 1m	50	139.25
620	PPT4560TS	45 x 60	50 x 1m	50	172.75
621	PPT6025TS	60 x 25	70 x 1m	70	130.25
622	PPT6040TS	60 x 40	60 x 1m	60	160.00
623	PPT6045TS	60 x 45	50 x 1m	50	161.25
624	PPT6060TS	60 x 60	40 x 1m	40	203.00



## TOP COVER UPVC PANEL TRUNKING

SR. NO.	PRODUCT CODE	SIZE	STANDARD PACK		RATE (Mtr)
		(mm)	Pc/Mtr	Mtr/Carton	
625	PPT25T	25	100 x 1m	100	30.00
626	PPT40T	40	50 x 1m	50	48.75
627	PPT45T	45	50 x 1m	50	52.00
628	PPT60T	60	50 x 1m	50	79.75
629	PPT75T	75	25 x 1m	25	80.75
630	PPT100T	100	25 x 1m	25	129.25

≈ FRLS: Fire Retardant - Low Smoke



## CORRUGATED FLEXIBLE CONDUIT PIPES & FITTINGS

**Precision Corrugated Flexible Conduit Pipes & Fittings** come in a wide and comprehensive range of material variants to suit a variety of applications. These conduits are manufactured in variants based on the final application for wiring purposes.

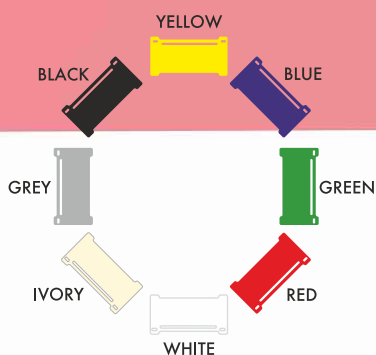
**POLYPROPYLENE FLEXIBLE CONDUITS** are the best solution for applications where resistance to constant flexing and vibration is essential, these conduits display excellent flexibility. Moreover, they are light weight and easy to install which makes them very popular. Temperature resistant from  $-5^{\circ}\text{C}$  to  $+90^{\circ}\text{C}$ .

**STEEL WIRE REINFORCED FLEXIBLE UPVC CONDUITS** are manufactured with soft polyvinyl chloride (uPVC) wall fused to high tensile steel wire in a coiled state. These conduits are unaffected by inorganic acid, alkali & saline water. Most suitable for electrical wiring in buildings, switch boards, panels, machinery, dust collectors, air dusting, exhaust of fumes, shrouds of railway coach wiring and hospital equipments. Temperature resistant from  $-5^{\circ}\text{C}$  to  $+60^{\circ}\text{C}$ .

**GALVANISED STEEL FLEXIBLE CONDUIT**  
Precision Steel Flexible Conduit Pipes are made from galvanised steel, helical wound strips having a square lock type construction and are manufactured in accordance to Indian/British Standards in galvanized zinc coating with spiral corrugated pattern finished surface. Mostly used as low pressure hose in Industrial domestic air conditioning, ventilation systems and as mechanical protection for insulated electrical cables & wires which may be exposed to atmospheric conditions.

### GALVANISED STEEL FLEXIBLE CONDUIT WITH PVC COATING

Precision PVC Coated Steel Flexible Conduit Pipes are made from galvanized steel, helical wound strips having a square lock type construction and are manufactured in accordance to Indian/British Standards in poly vinyl coating. They are available in black/grey colour with spiral corrugated pattern finished surface. Most suitable for mechanical protection of cable and wire in tunnels, hospitals, high-rise office blocks and public buildings.



Fire retardant



Corrosion Free

# CORRUGATED FLEXIBLE CONDUIT PIPES & FITTINGS

HSN : 39173100



## DIMENSIONS OF CORRUGATED FLEXIBLE CONDUITS

Nominal Diameter (mm)	Maximum Outside Diameter (mm)	Tolerance on Outside Diameter (mm)	Minimum Inside Diameter (mm)
10	10	- 0.1	7.0
16	16	- 0.3	10.7
20	20	- 0.3	14.1
25	25	- 0.4	18.3
32	32	- 0.4	24.3
40	40	- 0.4	31.2
50	50	- 0.5	39.6
63	63	- 0.6	52.6

## (PP) POLY PROPYLENE



SR. NO.	PRODUCT CODE	SIZE	STANDARD PACK		RATE (Mtr)
		OD (mm)	Mtr./Coil	Mtr./Bag	
631	PCFC 10	10	100	1000	8.00
632	PCFC 16	16	50	500	8.00
633	PCFC 20	20	50	500	11.00
634	PCFC 25	25	25	250	16.00
635	PCFC 32	32	25	250	27.00
636	PCFC 40	40	20	100	37.50
637	PCFC 50	50	15	75	56.00
638	PCFC 63	63	10	50	87.00



SR. NO.	PRODUCT CODE	SIZE	STANDARD PACK		RATE (Mtr)
		OD (mm)	Mtr./Coil	Mtr./Bag	
639	PCCL 10	10	100	1000	12.00
640	PCCL 16	16	50	500	13.00
641	PCCL 20	20	50	500	18.00
642	PCCL 25	25	25	250	24.50
643	PCCL 32	32	25	250	40.00
644	PCCL 40	40	20	100	47.50
645	PCCL 50	50	15	75	65.50
646	PCCL 63	63	10	50	102.00

## DIMENSIONS OF GALVANIZED STEEL FLEXIBLE CONDUIT PIPES

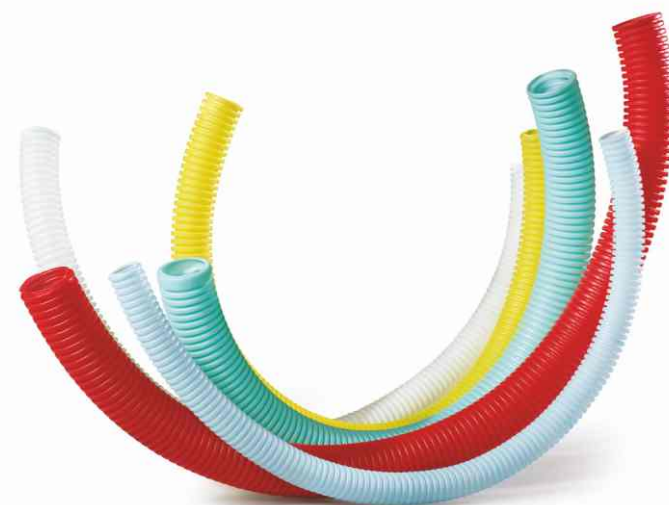
Nominal Size (mm)	Nominal Size (inch)	OD (mm)	ID (mm)	BENDING radius/mm
16	1/2"	15.5	12.5	40
20	3/4"	22.5	19.5	55
25	1"	28	25.0	60
32	1 1/4"	35.0	32.0	70
40	1 1/2"	42.0	38.0	80
50	2	54.0	50.0	90

\*Tolerance: Size below 50mm, +/- 1mm & above 50mm +/- 3mm

## DIMENSIONS OF GALVANIZED STEEL FLEXIBLE CONDUIT PIPES WITH PVC COATING

Nominal Size (mm)	Nominal Size (inch)	OD (mm)	ID (mm)	BENDING radius/mm
16	1/2"	16.5	12.5	40
20	3/4"	23.5	19.5	55
25	1"	29	25.0	60
32	1 1/4"	36.5	32.0	70
40	1 1/2"	44.0	38.0	80
50	2	57.0	51.0	90

\*Tolerance: Size below 50mm, +/- 1mm & above 50mm +/- 3mm



# CORRUGATED FLEXIBLE CONDUIT PIPES & FITTINGS

## CORRUGATED FLEXIBLE CONDUIT GLAND

HSN : 39174000



SR. NO.	PRODUCT CODE	SIZE	STANDARD PACK		RATE
		OD (mm)	Pc./Box	Pc./Carton	Pc
647	PFAG 16	16	125	2250	6.00
648	PFAG 20	20	75	1350	8.00
649	PFAG 25	25	50	900	10.50
650	PFAG 32	32	30	540	12.50
651	PFAG 40	40	20	360	18.00
652	PFAG 50	50	5	150	23.50

## GALVANIZED STEEL FLEXIBLE CONDUIT PIPES

HSN : 83071000



SR. NO.	PRODUCT CODE	NORMAL SIZE (mm)	NORMAL SIZE (Inch)	STANDARD PACK		RATE
				Mtr./Coil	Mtr./Bag	(Mtr)
668	PGIFC 16	16	1/2"	15	210	38.50
669	PGIFC 20	20	3/4"	15	150	51.50
670	PGIFC 25	25	1"	15	105	78.50
671	PGIFC 32	32	1 1/4"	15	75	93.50
672	PGIFC 40	40	1 1/2"	15	75	105.00
673	PGIFC 50	50	2"	10	50	156.00

## STEEL WIRE REINFORCED FLEXIBLE uPVC CONDUIT PIPE

HSN : 39172190



SR. NO.	PRODUCT CODE	SIZE	STANDARD PACK		RATE
		ID (mm)	Mtr./Coil	Mtr./Bag	(Mtr)
653	PCWR 10	10	30	300	43.50
654	PCWR 16	16	30	300	57.00
655	PCWR 20	20	30	240	73.50
656	PCWR 25	25	30	210	90.50
657	PCWR 30	30	30	150	117.00
658	PCWR 40	40	30	120	135.50
659	PCWR 50	50	30	90	162.00
660	PCWR 60	60	15	75	227.00

## GALVANIZED STEEL FLEXIBLE CONDUIT WITH PVC COATING

HSN : 83071000



SR. NO.	PRODUCT CODE	NORMAL SIZE (mm)	NORMAL SIZE (Inch)	STANDARD PACK		RATE
				Mtr./Coil	Mtr./Bag	(Mtr)
674	PGIFCP 16	16	1/2"	50	250	59.00
675	PGIFCP20	20	3/4"	25	150	78.50
676	PGIFCP 25	25	1"	25	125	119.50
677	PGIFCP 32	32	1 1/4"	15	75	142.00
678	PGIFCP 40	40	1 1/2"	15	75	167.50
679	PGIFCP 50	50	2"	15	60	238.00

## STEEL WIRE REINFORCED FLEXIBLE uPVC CONDUIT GLAND

HSN : 39174000



SR. NO.	PRODUCT CODE	SIZE	STANDARD PACK		RATE
		OD (mm)	Pc./Box	Pc./Carton	Pc
661	PFRG 10	10	75	1350	10.50
662	PFRG 16	16	60	1080	11.50
663	PFRG 20	20	45	810	14.50
664	PFRG 25	25	30	540	19.50
665	PFRG 30	30	20	360	24.00
666	PFRG 40	40	15	270	31.50
667	PFRG 50	50	5	150	45.00



[electrical@precisionpipes.com](mailto:electrical@precisionpipes.com)  
[www.precisionpipes.com](http://www.precisionpipes.com)

---

**We Care +91 77150 00015**

---

**PRECISION PLASTIC INDUSTRIES PVT. LTD.**

19/D, Nand Jyot Industrial Estate, Safed Pool, Andheri - Kurla Road,  
Andheri East, Mumbai 400 072, Maharashtra, India.